

Central Florida Fire Academy



CFFA Mission Statement:

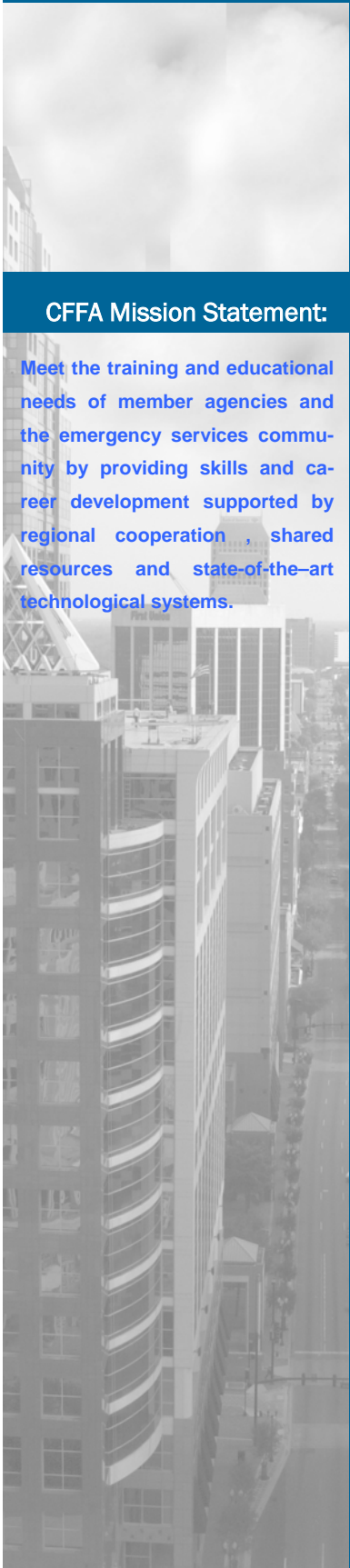
Meet the training and educational needs of member agencies and the emergency services community by providing skills and career development supported by regional cooperation, shared resources and state-of-the-art technological systems.

Table of Contents

Organization Chart	2
Expenditure Summary	3
Staffing Summary	4
Staffing/Expenditure Budget History	5

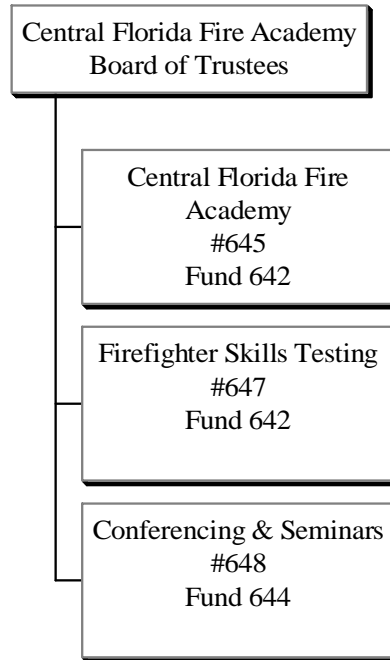
The Central Florida Fire Academy (CFFA) was created by an ordinance on June 6, 1977, in an effort to coordinate firefighter training activities of the City and Orange County. An eleven member Board of Trustees oversees the operation of the CFFA. The trustees are appointed by the Mayor and serve without pay. Three members are appointed from recommended nominees submitted by the City, three from nominees submitted by the County, one from nominees submitted by the Orange County School Board and four members are appointed from other member fire agencies. The CFFA is accounted for by the City as a proprietary joint venture. The budget is included in the City's overall total.

Central Florida Fire Academy



CFFA Mission Statement:

Meet the training and educational needs of member agencies and the emergency services community by providing skills and career development supported by regional cooperation, shared resources and state-of-the-art technological systems.



Central Florida Fire Academy

EXPENDITURE SUMMARY

Fund Office/Bureau Program Number and Name	2001/02 Actual Expenditures	2002/03 Revised Budget	2003/04 Proposed Budget	% Change
CENTRAL FLORIDA FIRE ACADEMY (CFFA) FUND #642				
645 Central Florida Fire Academy	\$ 1,988,030	\$ 1,001,873	\$ 1,176,504	17.43%
647 Firefighter Skills Testing	9,349	6,400	13,500	110.94%
TOTAL – CFFA FUND	\$ 1,997,379	\$ 1,008,273	\$ 1,190,004	18.02%
CFFA CONFERENCING & SEMINARS FUND #644				
648 Conferences and Seminars	\$ 54,915	\$ 60,000	\$ 60,000	0.00%
TOTAL – CONFERENCING & SEMINARS FUND	\$ 54,915	\$ 60,000	\$ 60,000	
TOTAL – CFFA FUNDS	\$ 2,052,294	\$ 1,068,273	\$ 1,250,004	17.01%
Expenditure by Classification				
Salaries and Wages	\$ 474,215	\$ 204,882	\$ 275,941	34.68%
Employee Benefits	29,606	50,391	60,413	19.89%
Supplies	94,887	50,000	107,240	114.48%
Contractual Services	927,372	495,656	514,973	3.90%
Utilities	10,385	7,000	10,000	42.86%
Other Operating	2,972	10,000	4,700	(53.00%)
Travel/Training	4,715	7,500	5,000	(33.33%)
Internal Services	8,357	9,737	16,572	70.20%
Capital	462,157	99,593	97,200	(2.40%)
Non-Operating	37,628	133,514	157,965	18.31%
TOTAL – CFFA FUNDS	\$ 2,052,294	\$ 1,068,273	\$ 1,250,004	17.01%

CFFA Mission Statement:

Meet the training and educational needs of member agencies and the emergency services community by providing skills and career development supported by regional cooperation, shared resources and state-of-the-art technological systems.

Central Florida Fire Academy



CFFA Mission Statement:

Meet the training and educational needs of member agencies and the emergency services community by providing skills and career development supported by regional cooperation, shared resources and state-of-the-art technological systems.

Staffing Summary

	Actual 2001/2002	Revised Budget 2002/2003	Proposed Budget 2003/2004
<u>CENTRAL FLORIDA FIRE ACADEMY (CFFA) FUND #642</u>			
645 Central Florida Fire Academy	<u>4</u>	<u>4</u>	<u>4</u>
TOTAL - CFFA FUND	4	4	4

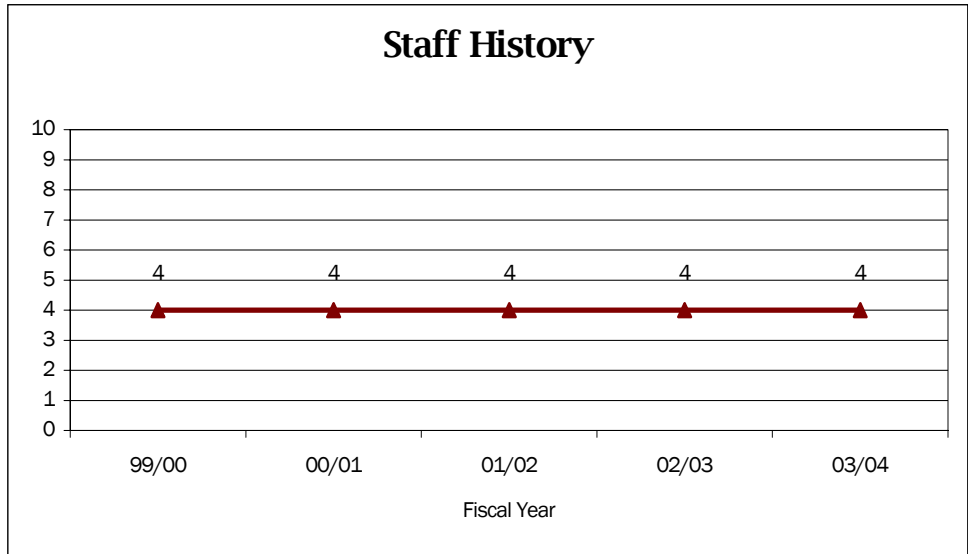
Central Florida Fire Academy



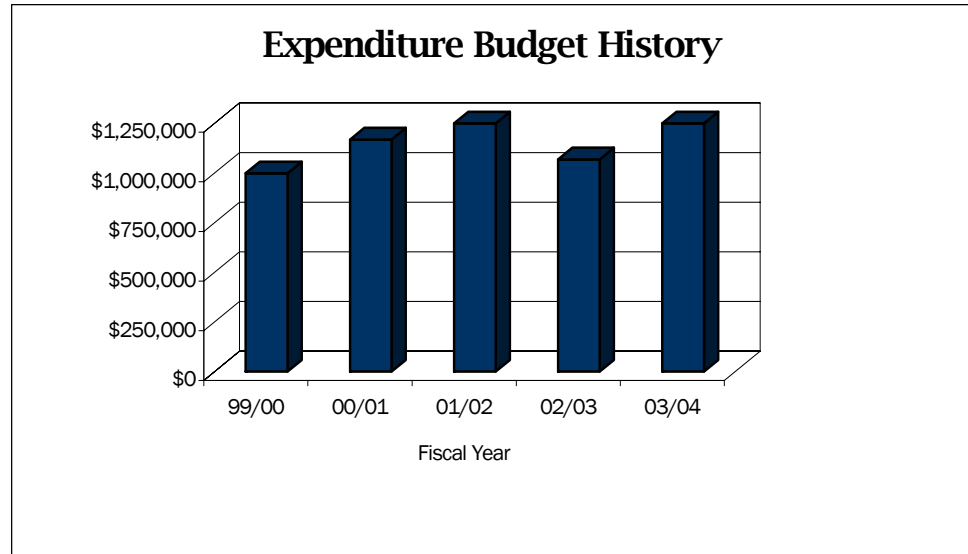
CFFA Mission Statement:

Meet the training and educational needs of member agencies and the emergency services community by providing skills and career development supported by regional cooperation, shared resources and state-of-the-art technological systems.

Staff History



Expenditure Budget History



Central Florida Fire Academy



CFFA Mission Statement:

Meet the training and educational needs of member agencies and the emergency services community by providing skills and career development supported by regional cooperation, shared resources and state-of-the-art technological systems.

THIS PAGE LEFT INTENTIONALLY BLANK