

# **Statistical Snapshot of Orlando Schools Being Considered for Closure/Merging**

Prepared February 2009

# Eccleston Elementary

1500 Aaron Ave.

**Year Built**—1955 (1950's suburban, inner ring)

**School Site Acreage**—18.81 acres

**School Recreational Acreage**—6 acres

**School—Outdoor Recreational Facilities**

- 1 Little League Baseball Field
- 2 Basketball Courts
- 1 Soccer/Multipurpose Field
- 1 Playground
- Open Play Area

**Adjacent Orlando Park Acreage/Facilities**

- None

**Joint-Use Agreements**

- None

As part of a potential joint use project, the City may want to consider extending Lake Fran bike trail to connect both schools along drainage canal.

It should be noted that there appears to be vacant land to the north of the school site that could potentially be used for school or park expansion.



**Sales Tax Referendum Project**

*Project Type*—Comprehensive

*Priority Indicator*—64

*Total Cost*—\$14,637,418

*Funded Year*—FY2011- 2012

**Program Capacity: 427**

**Student Enrollment: 465**

White — 0.21%

Black — 96.98%

Hispanic — 2.36%

Other — 0.45%

**# of Students Bused: 17**

**Recent School Performance Grades**

1999 — D

2000 — D

2001 — D

2002 — F

2003 — B

2004 — A

2005 — C

2006 — C

2007 — A

2008 — C

**City Commission Districts:**

District 5, Daisy Lynum

District 6, Sam Ings

**Zoning:** P

**Future Land Use:** PRI

**Surrounding FLU:** Res-Low

# Fern Creek Elementary

1121 N. Ferncreek Ave

**Year Built**—1947 (Urban Core)  
**School Site Acreage**—9.11 acres  
**School Recreational Acreage**—1.32 acres

**School—Outdoor Recreational Facilities**

- 1 Basketball Court
- Open Play Area

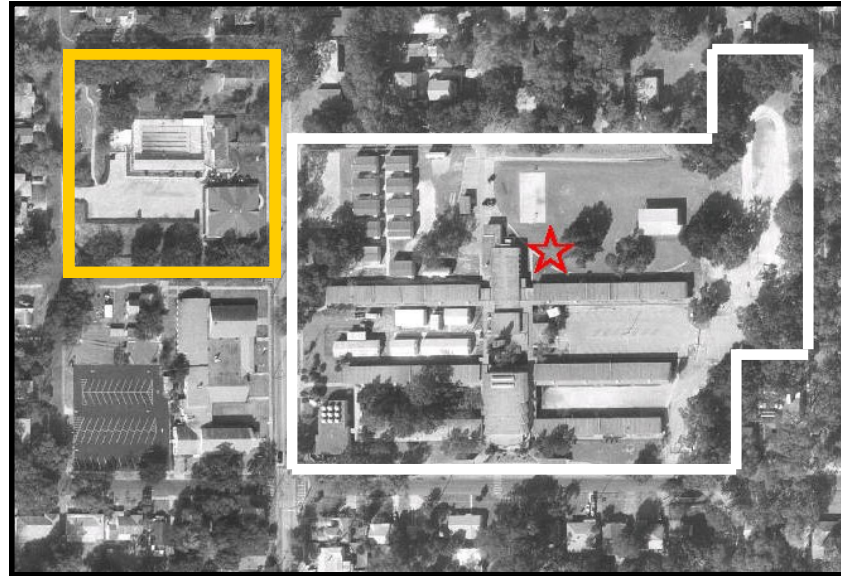
**Adjacent Orlando Park Acreage/ Facilities**

Colonialtown Neighborhood Center (1.81 ac)

- 1 Recreation Center
- 1 Pool
- 1 Playground

**Joint-Use Agreements**

- None, although some interaction with the City's pool is occurring.



Aerial 2001

**Sales Tax Referendum Project**

*Project Type*—Comprehensive  
*Priority Indicator*—101  
*Total Cost*—\$19,239,228  
*Funded Year*—FY2014- 2015

**Program Capacity: 411**  
**Student Enrollment: 369**

White — 25.20%  
Black — 46.88%  
Hispanic — 13.27%  
Other — 14.65%

**# of Students Bused: 174**

**Recent School Performance**

**Grades**

1999 — D  
2000 — D  
2001 — C  
2002 — C  
2003 — B  
2004 — C  
2005 — A  
2006 — A  
2007 — A  
2008 — B

**City Commission Districts:**

District 2, Tony Ortiz  
District 3, Robert Stuart  
District 4, Patty Sheehan  
District 5, Daisy Lynum

**Zoning:** P/T/SP

**Future Land Use:** PRI

**Surrounding FLU:** Res-Low

# Grand Avenue Elementary

800 Grand St.

## Year Built—1926 Main Bldg.(Urban Core)

- 1950 Bldgs 2, 3 & Kindergarten
- 1970 Media Center
- 1990 Family Service Center

School Site Acreage—4.53 acres

School Recreational Acreage—0 acres

## School—Outdoor Recreational Facilities

- None visible

## Adjacent Orlando Park Acreage/ Facilities

Grand Avenue Park (8.16 acres)

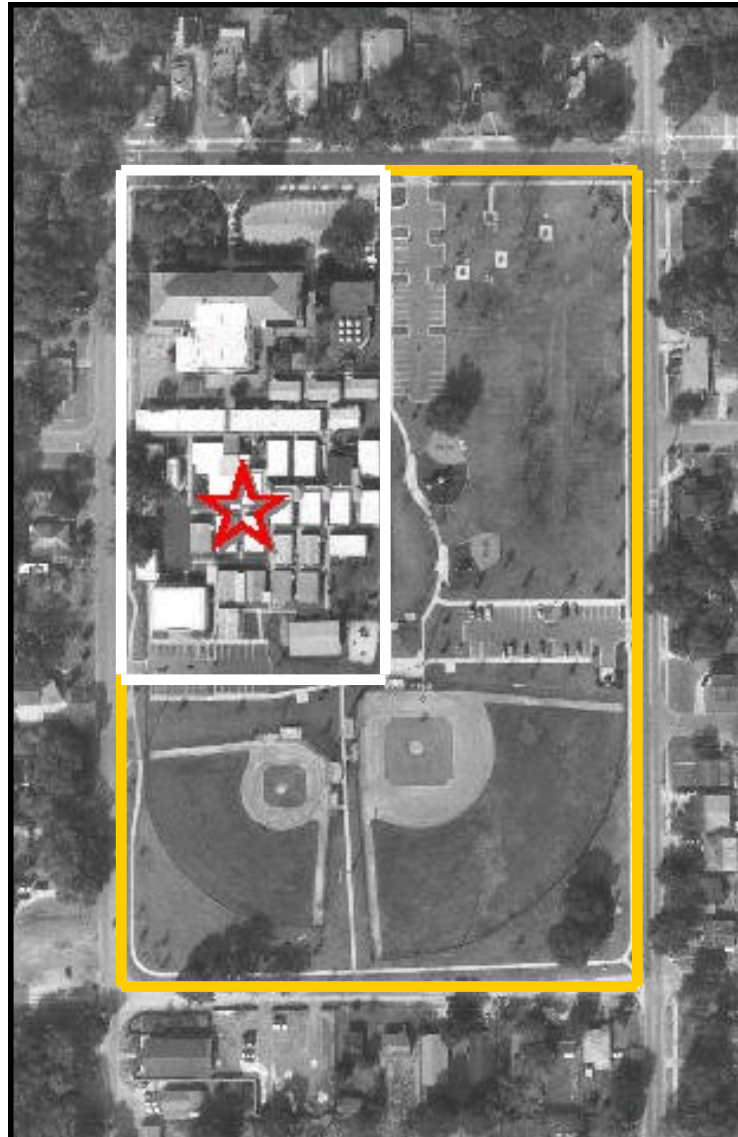
- 2 Little League Baseball Fields
- 1 Playground
- Open Play Area

## Joint-Use Agreements

- OCPS/Orlando—Ballfields, playground, parking (OCPS built the parking); joint use of OCPS campus and Grand Avenue Park; expires 8/25/2023

## Park Level of Service

- Neighborhood Park Service Area 12
- 17 acre surplus



## Sales Tax Referendum Project

Project Type—Comprehensive

Priority Indicator—74

Total Cost—\$14,568,805

Funded Year—FY2012 -2013

Program Capacity: 230

Student Enrollment: 248

White — 4.03%

Black — 78.62%

Hispanic — 12.09%

Other — 5.26%

# of Students Bused: 11

## Recent School Performance Grades

1999 — D

2000 — D

2001 — D

2002 — D

2003 — D

2004 — D

2005 — F

2006 — D

Converted to Grades K-2 in 2007

## City Commission Districts:

District 4, Patty Sheehan

District 5, Daisy Lynum

District 6, Ernest Page

Zoning: P/T

Future Land Use: PRI

Surrounding FLU: Res-Low

# Hillcrest Elementary

1010 E. Concord St.

**Year Built**—1964 (Urban Core)  
**School Site Acreage**—3.64 acres  
**School Recreational Acreage**—0 acres

#### **School—Outdoor Recreational Facilities**

- None visible (portables located on former recreation area). School was rebuilt within the last 3 years.

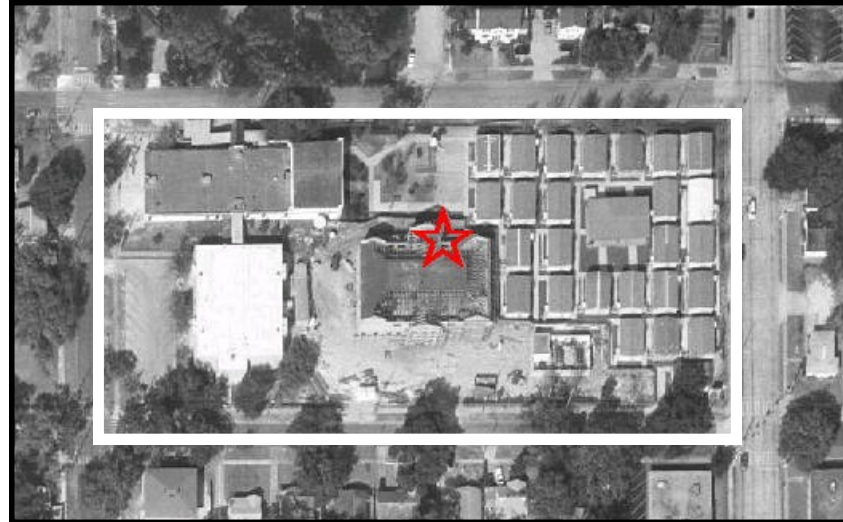
#### **Adjacent Orlando Park Acreage/ Facilities**

- None

#### **Joint-Use Agreements**

- None

While there are no nearby City parks, the site is in close proximity to the Central Florida YMCA. There may be a potential partnership possibility with the YMCA.



Aerial 2001

#### **Sales Tax Referendum Project**

*Project Type*—Comprehensive  
*Priority Indicator*—99  
*Total Cost*—\$11,967,389  
*Funded Year*—FY2014 -2015

**Program Capacity: 358**  
**Student Enrollment: 386**  
White — 47.15%  
Black — 18.65%  
Hispanic — 13.73%  
Other — 20.47%

**# of Students Bused: 64**

#### **Recent School Performance Grades**

1999 — D  
2000 — C  
2001 — D  
2002 — C  
2003 — A  
2004 — B  
2005 — A  
2006 — A  
2007 — A  
2008 — A

#### **City Commission Districts:**

District 4, Patty Sheehan  
District 5, Daisy Lynum

**Zoning:** P/T

**Future Land Use:** PRI

**Surrounding FLU:** Res-Med/  
Office-Low/Comm.-AC

# Ivey Lane Elementary

209 Silverton St.

**Year Built**—1967 (Suburban, inner ring)  
**School Site Acreage**—12.68 acres  
**School Recreational Acreage**—6 acres

### School—Outdoor Recreational Facilities

- City financed recreation facilities on OCPS owned property
- 1 Softball Field
- 1 Soccer/Multipurpose Field
- 1 Basketball Court
- 1 Tennis Court

### Adjacent Orlando Park Acreage/ Facilities

Ivey Lane Park (2.36 acres)

- 1 Playground

### Joint-Use Agreements

- OCPS/Orange County/Orlando—joint use of OCPS campus and Ivey Lane Park; cost-10% of maintenance cost (approximately \$5,000 per year); no expiration date

### Corresponding Orlando Park & Recreation Projects

*Project*—Ivey Lane Park (New/Renovation)

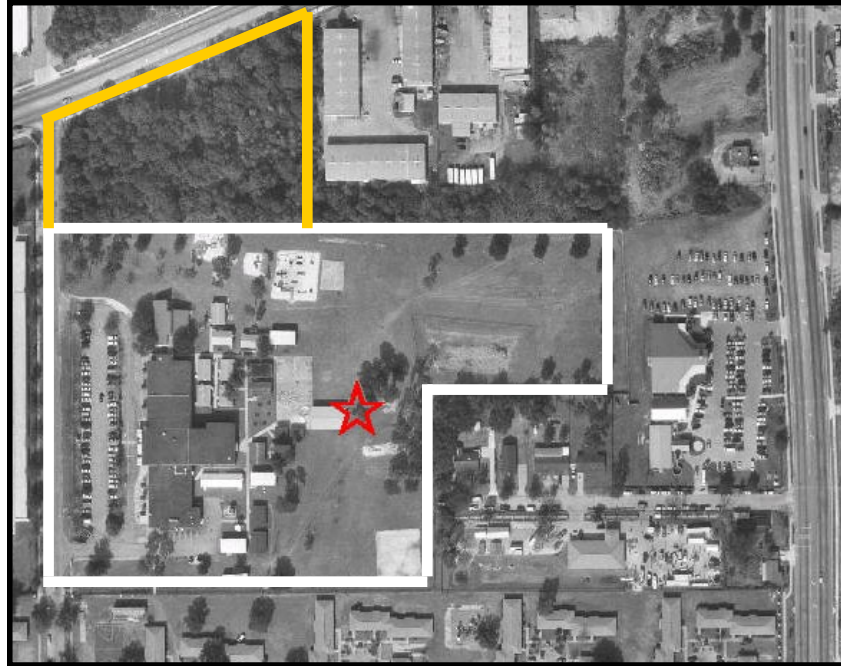
*Funding Source*—Mayor's Parks Initiative (MPI) and CIP

*Total Cost*— \$1,200,000 (MPI)  
\$250,000 (CIP)

*Funded Year*—2003-2004

### Park Level of Service

- Neighborhood Park Service Area 11
- 2 acre surplus



Aerial 2001

### Sales Tax Referendum Project

*Project Type*—Comprehensive

*Priority Indicator*—117

*Total Cost*—\$17,513,875

*Funded Year*—FY2016-2017

**Program Capacity:** 422  
**Student Enrollment:** 371

White — 1.07%

Black — 92.45%

Hispanic — 5.66%

Other — 0.82%

**# of Students Bused:** 102

### Recent School Performance Grades

1999 — D

2000 — D

2001 — D

2002 — F

2003 — C

2004 — D

2005 — F

2006 — C

2007 — B

2008 — C

### City Commission Districts:

District 5, Daisy Lynum

**Zoning:** P

**Future Land Use:** PRI

**Surrounding FLU:** Res-Med/Indust.

# Kaley Elementary

1600 E. Kaley St.

**Year Built**—1946 (Urban Core)  
**School Site Acreage**—6.82 acres  
**School Recreational Acreage**—2.25 acres

**School—Outdoor Recreational Facilities**

- 1 Playground
- Paved Courts
- Open Play Area

**Adjacent Orlando Park Acreage/Facilities**

- None

**Joint-Use Agreements**

- None

Kaley serves special needs students.



**Sales Tax Referendum Project**

*Project Type*—Comprehensive  
*Priority Indicator*—104  
*Total Cost*—\$13,767,521  
*Funded Year*—FY2014-2015

**Program Capacity:** 274  
**Student Enrollment:** 264  
White — 44.69%  
Black — 29.92%  
Hispanic — 20.45%  
Other — 4.94%

**# of Students Bused:** 91

**Recent School Performance Grades**

1999 — D  
2000 — C  
2001 — D  
2002 — C  
2003 — A  
2004 — B  
2005 — B  
2006 — C  
2007 — C  
2008 — C

**City Commission Districts:**

District 1, Phil Diamond

**Zoning:** P/T

**Future Land Use:** PRI

**Surrounding FLU:** Res-Low

Aerial 2001

# Lake Como Elementary

901 S. Bumby Ave.

**Year Built**—1951 (1950's suburban, inner ring)  
**School Site Acreage**—9.05 acres  
**School Recreational Acreage**—1.5 acres

### School—Outdoor Recreational Facilities

- 2 Basketball Courts
- 1 Playground

### Adjacent Orlando Park Acreage/Facilities

Lake Como Ballfields (3.11 acres)

- 2 Little League Ballfields
- 1 Soccer/Multipurpose field

### Joint-Use Agreements

- OCPS/Orlando—athletic fields, restrooms; joint use of OCPS campus and City recreation fields with automatic renewal in 5 year terms; expires 1/9/2021

### Corresponding Orlando Park & Recreation Projects

*Project*—Lake Como Fields (Renovation)  
*Funding Source*—Mayor's Parks Initiative (MPI)  
*Total Cost*—\$260,000  
*Funded Year*—2001; completed 9/01

### Park Level of Service

- Neighborhood Park Service Area 14
- 25 acre surplus



Aerial 2001

### Sales Tax Referendum Project

*Project Type*—Comprehensive  
*Priority Indicator*—98  
*Total Cost*—\$17,297,654  
*Funded Year*—FY2014-2015

**Program Capacity:** 366  
**Student Enrollment:** 258  
White — 34.88%  
Black — 46.51%  
Hispanic — 16.66%  
Other — 1.95%

**# of Students Bused:** 103

### Recent School Performance Grades

1999 — D  
2000 — \*  
2001 — \*  
2002 — B  
2003 — A  
2004 — C  
2005 — A  
2006 — C  
2007 — C  
2008 — B

### City Commission Districts:

District 1, Phil Diamond  
District 4, Patty Sheehan  
District 5, Daisy Lynum

### Zoning:

**Future Land Use:** PRI  
**Surrounding FLU:** Res-Low

# Orange Center Elementary

621 S. Texas Ave.

**Year Built**—1966 (Urban)  
- 1992 Family Services Center  
- 1994 Media Center

**School Site Acreage**—7.33 acres  
**School Recreational Acreage**—0.5 acres

**School—Outdoor Recreational Facilities**

- 1 Playground
- Remainder covered by portables

**Adjacent Orlando Park Acreage/ Facilities**

Lizzie Rogers Park (3.14 acres)  
• 1 Playground

**Joint-Use Agreement**

- None

There are also 2 vacant properties located north of the school and east of Lizzie Rogers Park that may be appropriate for school and/or park expansion. Site is also in fairly close proximity to Orlando Sports Campus (on the east side of Texas Avenue), a joint City/OCPS recreational facility.



Aerial 2001

**Sales Tax Referendum Project**

*Project Type*—Comprehensive  
*Priority Indicator*—47  
*Total Cost*—\$12,134,438  
*Funded Year*—FY2009-2010

**Program Capacity:** 419  
**Student Enrollment:** 347

White — 0.00%  
Black — 98.84%  
Hispanic — 0.86%  
Other — 0.30%

**# of Students Bused:** 4

**Recent School Performance Grades**

1999 — D  
2000 — D  
2001 — D  
2002 — D  
2003 — D  
2004 — C  
2005 — D  
2006 — D  
2007 — F  
2008 — A

**City Commission Districts:**

District 5, Daisy Lynam  
District 6, Sam Ings

**Zoning:** P

**Future Land Use:** PRI

**Surrounding FLU:** Res-Low/Res-Med

# Richmond Heights Elementary

2500 Bruton Blvd.

**Year Built**—1964 (Suburban, inner ring)  
**School Site Acreage**—15.22 acres  
**School Recreational Acreage**—6.42 acres

### School—Outdoor Recreational Facilities

- 2 Little League Ballfields
- 2 Basketball Courts
- 1 Soccer/Multipurpose Field
- 1 Playground

### Adjacent Orlando Park Acreage/ Facilities

- None
- Subject site connects to the City's Lake Fran Bike Trail (northwest corner of site).

### Joint-Use Agreements

- None

Site contains a significant amount of open space.



Aerial 2001

### Sales Tax Referendum Project

*Project Type*—Comprehensive  
*Priority Indicator*—110  
*Total Cost*—\$19,459,861  
*Funded Year*—FY2015-2016

**Program Capacity: 593**  
**Student Enrollment: 322**

White — 0.31%  
Black — 94.09%  
Hispanic — 4.65%  
Other — 0.95%

**# of Students Bused: 9**

### Recent School Performance Grades

1999 — D  
2000 — D  
2001 — D  
2002 — F  
2003 — C  
2004 — D  
2005 — D  
2006 — C  
2007 — F  
2008 — B

### City Commission Districts:

District 6, Sam Ings

**Zoning:** P

**Future Land Use:** PRI

**Surrounding FLU:** Res-Low

# Rock Lake Elementary

408 N. Tampa Ave.

**Year Built**—1957 (Suburban, inner ring)  
**School Site Acreage**—8.81 acres  
**School Recreational Acreage**—0.50 acres

### School—Outdoor Recreational Facilities

- 1 Playground
- No other recreational facilities on site.

### Adjacent Orlando Park Acreage/ Facilities

Rock Lake Park (13.64 acres, much of that acreage is wetland; OCPS donated property for park in exchange for demolishing old auditorium building)

- 1 Soccer/Multi-Purpose Field
- 1 Basketball Court
- 1 Tennis Court

### Joint-Use Agreements

- OCPS/Orlando—Joint use of City park basketball court, playground, covered pavillion, and soccer fields; expires 10/31/2062.

### Corresponding Orlando Park & Recreation Projects

**Project**—Rock Lake Park (Renovation)  
**Funding Source**—Mayor's Parks Initiative  
**Total Cost**—\$1,200,000  
**Funded Year**—2003-2004; estimated completion date 9/30/2004

### Park Level of Service

- Neighborhood Park Service Area 7
- 18 acre surplus



Aerial 2001

### Sales Tax Referendum Project

**Project Type**—Comprehensive  
**Priority Indicator**—102  
**Total Cost**—\$19,062,721  
**Funded Year**—FY2014-2015

**Program Capacity:** 593  
**Student Enrollment:** 322  
White — 0.31%  
Black — 94.09%  
Hispanic — 4.65%  
Other — 0.95%

**# of Students Bused:** 28

### Recent School Performance Grades

1999 — D  
2000 — D  
2001 — D  
2002 — F  
2003 — C  
2004 — C  
2005 — A  
2006 — C  
2007 — A  
2008 — A

### City Commission Districts:

District 5, Daisy Lynum

### Zoning: P

**Future Land Use:** PRI

**Surrounding FLU:** Res-Low

# Washington Shores Elementary

944 W. Lake Mann Dr.

**Year Built**—1956 (1950's suburban, inner ring)  
**School Site Acreage**—9.18 acres  
**School Recreational Acreage**—3.1 acres

### School—Outdoor Recreational Facilities

- 1 Little League Baseball Field
- 1 Playground
- 1 Basketball Court
- Open Play Area

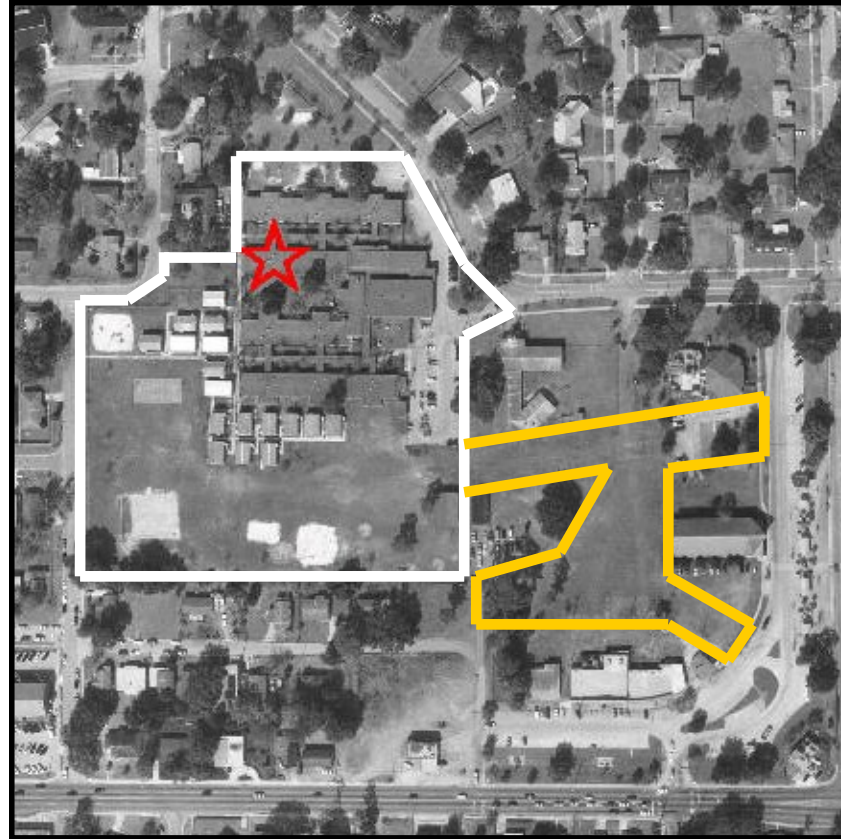
### Adjacent Orlando Park Acreage/ Facilities

Washington Shores Park (1 acre)

- Decorative Greenspace—no facilities.

### Joint-Use Agreements

- None



Aerial 2001

### Sales Tax Referendum Project

*Project Type*—Comprehensive  
*Priority Indicator*—97  
*Total Cost*—\$18,533,201  
*Funded Year*—FY2014-2015

**Program Capacity:** 472  
**Student Enrollment:** 529

White — 0.75%  
Black — 97.35%  
Hispanic — 0.94%  
Other — 0.96%

**# of Students Bused:** 12

### Recent School Performance Grades

1999 — D  
2000 — D  
2001 — D  
2002 — B  
2003 — C  
2004 — D  
2005 — D  
2006 — C  
2007 — C  
2008 — C

### City Commission Districts:

District 5, Daisy Lynam

**Zoning:** P

**Future Land Use:** PRI

**Surrounding FLU:** Res-Low

# Howard Middle School

**Year Built**—1926 (Urban)  
**Opened as a Jr. High School**—1952  
**School Site Acreage**—7.95 acres  
**School Recreational Acreage**—3.69 acres

## **School—Outdoor Recreational Facilities**

- 1 Track
- 1 Soccer/Multi-purpose field
- 2 Basketball Courts

## **Adjacent Orlando Park Acreage/Facilities**

- None

## **Joint-Use Agreements**

- OCPS/Orlando—Basketball courts, open field, track, parking; City runs after school programs; residents use as a Downtown park/neighborhood focal point; annual automatic 1 yr. renewal through 2013.

Historic Landmark



Aerial 2007

**Sales Tax Referendum Project**  
Not on list

**Program Capacity: 1,112**  
**Current Enrollment: 616**  
White — 29.38%  
Black — 45.94%  
Hispanic — 20.77%  
Other — 3.91%

## **Recent School Performance**

### **Grades**

1999 — D  
2000 — D  
2001 — C  
2002 — C  
2003 — C  
2004 — C  
2005 — B  
2006 — B  
2007 — B  
2008 — A

## **City Commission Districts:**

District 4, Patty Sheehan  
District 1, Phil Diamond  
District 2, Tony Ortiz  
District 5, Daisy Lynum  
District 6, Sam Ings

**Zoning:** P/T

**Future Land Use:** PRI

**Surrounding FLU:** Office Med/  
Res-Med/Office-Low/R-2B/T/HP