



Zoning Districts Map 22

LEGEND

Example: $\frac{R-2A}{T/H/P/SP}$
 Zoning District
 Overlay District

- Residential Districts**
- R-1s** One Family Residential (Includes R-1N, R-1, R-1A, R-1AA)
Density Range: 0 to 12 DU/Acre
 - R-2A** One to Two Family Residential
Density Range: 0 to 12 DU/Acre
 - R-3A** Low Intensity Development
Density Range: 0 to 12 DU/Acre
 - RN** Residential Neighborhood District
Density Range: 0 to 12 DU/Acre
 - R-2B** One to Five Family Residential
Density Range: 0 to 16 DU/Acre
 - R-3B** Medium Intensity Development
Density Range: 12 to 21 DU/Acre
 - R-3C** Medium Intensity Development
Density Range: 12 to 30 DU/Acre
 - R-3D** High Intensity Development
Density Range: 30 to 75 DU/Acre
- Mixed Residential, Office Districts**
- MXD-1** Medium Intensity Mixed Res - Office
Density/Intensity: 12 to 21 DU/Acre and/or 0 to 0.50 FAR
 - MXD-2** High Intensity Mixed Residential - Office
Density/Intensity: 30 to 75 DU/Acre (200 CU) and/or 0.40 to 0.55 FAR
- Office - Residential Districts**
- O-1** Low Intensity Office - Residential
Density/Intensity: 0 to 21 DU/Acre and/or 0 to 0.40 FAR
 - O-2** Medium Intensity Office - Residential
Density/Intensity: 12 to 40 DU/Acre and/or 0.30 to 0.70 FAR
 - O-3** High Intensity Office - Residential
Density/Intensity: 30 to 75 DU/Acre (200 CU) and/or 0.40 to 1.00 FAR
- Mixed Use Corridor Districts**
- MU-1** Medium Intensity Mixed Use Corridor
Density/Intensity: 15 to 30 DU/Acre and/or 0 to 0.50 FAR
 - MU-2** High Intensity Mixed Use Corridor
Density/Intensity: 30 to 75 DU/Acre (200 CU) and/or 0.4 to 1.00 FAR
- Industrial Districts**
- I-G** General Industrial
Intensity Range: 0 to 0.70 FAR
 - I-P** Industrial Park
Intensity Range: 0 to 0.70 FAR
 - I-C** Industrial - Commercial
Intensity Range: 0 to 0.70 FAR
- Airport Support Districts**
- ASD-1** Airport Support District - Medium Intensity
See FLU Goal 4 and Associated Objectives and Policies
 - ASD-2** Airport Support District - High Intensity
See FLU Goal 4 and Associated Objectives and Policies
- Activity Center Districts**
- AC-N** Neighborhood Activity Center
Density/Intensity: 12 to 30 DU/Acre and/or 0 to 0.3 FAR
 - AC-1** Community Activity Center
Density/Intensity: 30 to 40 DU/Acre and/or 0.35 to 0.70 FAR
 - AC-2** Urban Activity Center
Density/Intensity: 30 to 100 DU/Acre and/or 0.50 to 1.0 FAR
 - AC-3** Metropolitan Activity Center
Density/Intensity: 75 to 200 DU/Acre and/or 0.75 to 1.5 FAR
 - AC-3A** Downtown Metropolitan Activity Center
Density/Intensity: 75 to 200 DU/Acre and/or 0.75 to 1.5 FAR
 - TC/UTC** Town Center/Urban Transit Center District
See FLU Goal 4 and Associated Objectives and Policies
 - VC/UTC** Village Center/Urban Transit Center District
See FLU Goal 4 and Associated Objectives and Policies
 - VC** Village Center District
See FLU Goal 4 and Associated Objectives and Policies
 - NC** Neighborhood Center District
See FLU Goal 4 and Associated Objectives and Policies
- Other Zoning Districts**
- H** Holding/No City Zoning
 - P** Public Use
 - PD** Planned Development
 - C** Conservation / Water
 - UR** Urban Reserve
- Overlay Districts**
- SP** Specially Planned Area
 - HP** Historic Preservation
 - AR** Appearance Review
 - RP** Resource Protection
 - T** Traditional City
 - AN** Aircraft Noise
 - MA** Major Attraction
 - W** Wekiva

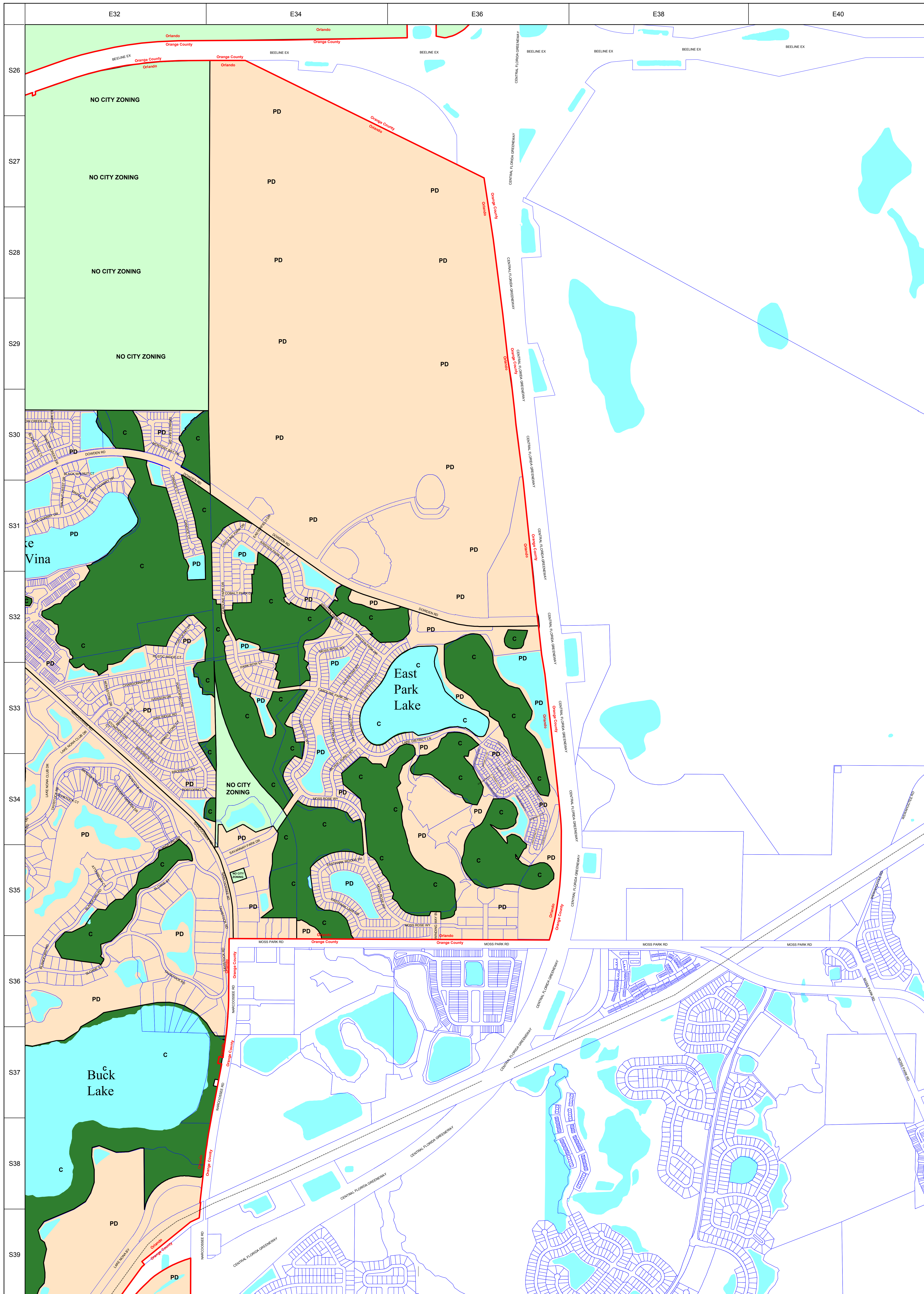
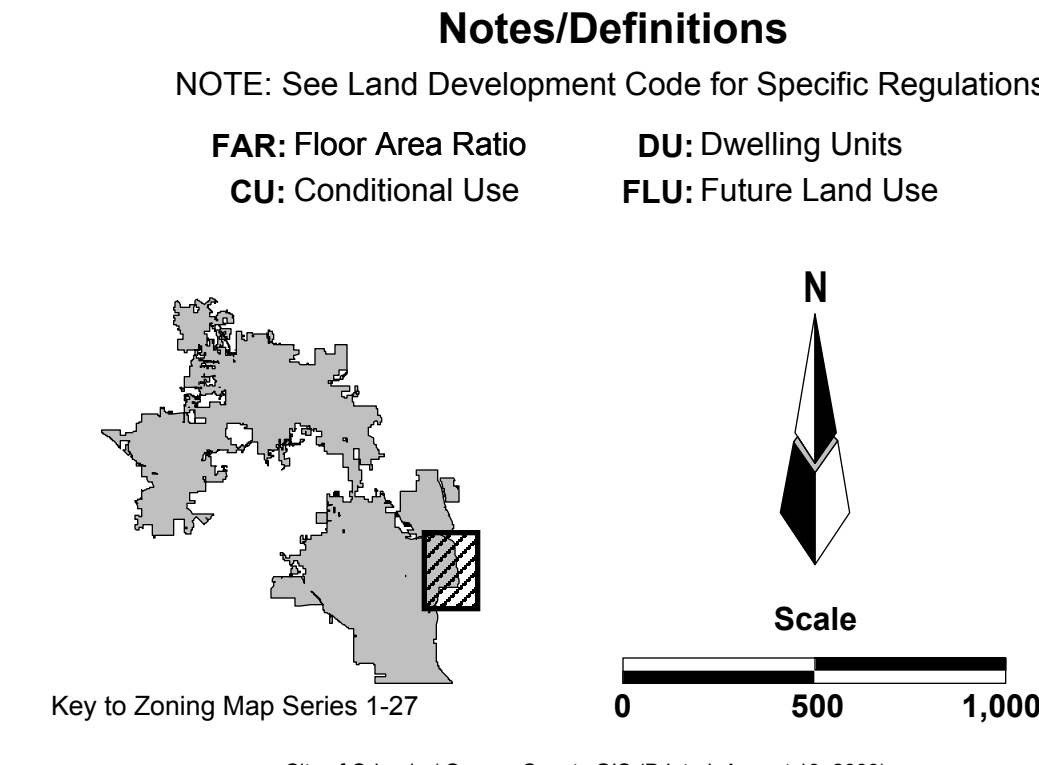
Amended by City Council:

- On 06/01/98, Ordinance #31260
- On 02/04/98, Ordinance #31710
- On 09/25/90, Ordinance #33274
- On 11/13/90, Ordinance #33388
- On 06/04/91, Ordinance #33837
- On 10/10/91, Ordinance #34110/10/22
- On 05/09/92, Ordinance #35297/92
- On 08/25/93, Ordinance #36221/93
- On 06/04/94, Ordinance #36599/93
- On 04/11/95, Ordinance #36541/95
- On 06/20/95, Ordinance #36599/95
- On 03/20/96, Ordinance #37023/96
- On 07/17/96, Ordinance #37110/96
- On 08/20/97, Ordinance #37623/97
- On 03/17/98, Ordinance #38237/98
- On 04/22/98, Ordinance #39542/101

Notes/Definitions

NOTE: See Land Development Code for Specific Regulations

FAR: Floor Area Ratio **DU:** Dwelling Units
CU: Conditional Use **FLU:** Future Land Use



NOTE: These maps are accurate as of the print date shown at the bottom of the legend. The maps are provided for reference only and should not be relied upon without reviewing the Official Zoning Map series kept in the City Planning Division, 6th Floor, Orlando City Hall.