

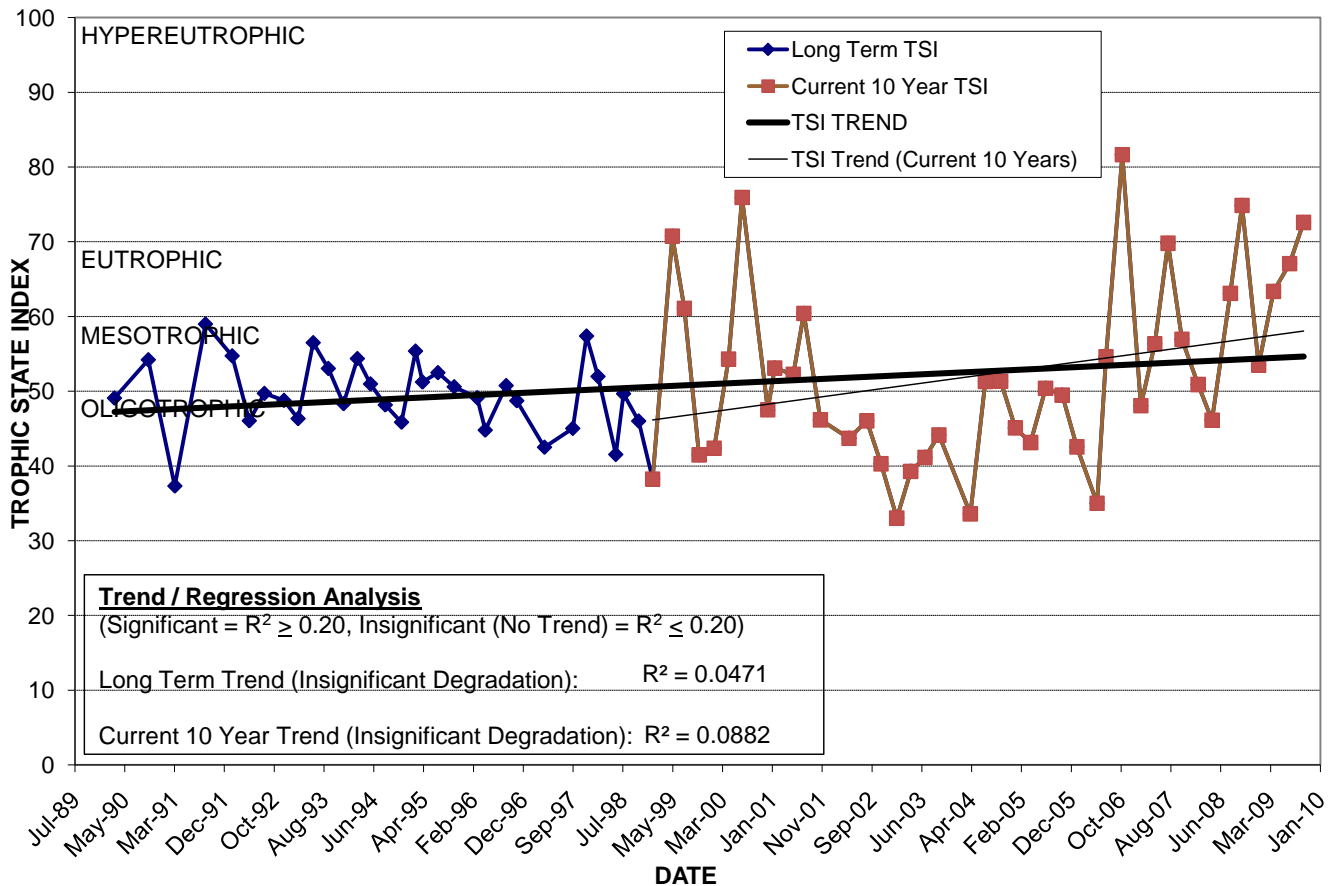
LAKE BEARDALL

Location: Lat **N 28° 32' 11.8"** Long **W 81° 24' 11.2"**
 Section **34** Township **22S** Range **29E**
 Lake Surface Area: **3 acres**
 Lake Volume: **842,900 ft³**
 Shoreline Length: **2,636 ft (803 m)**
 Mean Depth: **6.2 ft (1.9 m)**
 Maximum Depth: **10.6 ft (3.2 m)**

Water Management District: **South Florida**
 Drainage Code: **KR-SC-12**
 Drainage Basin Area: **132 acres**
 Land Use: **7% Res, 21% Com, 48% Vac**
 Drain Wells: **No** Aeration: **Yes** (installed 11/99)
 Lake Origin: **Excavation**
 Grass Carp (*Ctenopharyngodon idella*): **No**

2009 Water Quality Data		TSI Ranking: 82 (out of 95 lakes)			
	Total Phosphorus (mg/l)	Total Nitrogen (mg/l)	Secchi Depth (m)	Chlorophyll-a (mg/m ³)	Trophic State Index
Minimum	0.054	0.89	0.6	22.0	53
Maximum	0.178	1.34	1.7	52.3	73
Average	0.119	1.13	1.0	35.6	64

Long-Term Trophic State Index Values and Linear Regression Trend Line



Location: Just south of the Citrus Bowl between Rio Grande Ave. and Tampa Ave. Outfall flows to Clear Lake.