

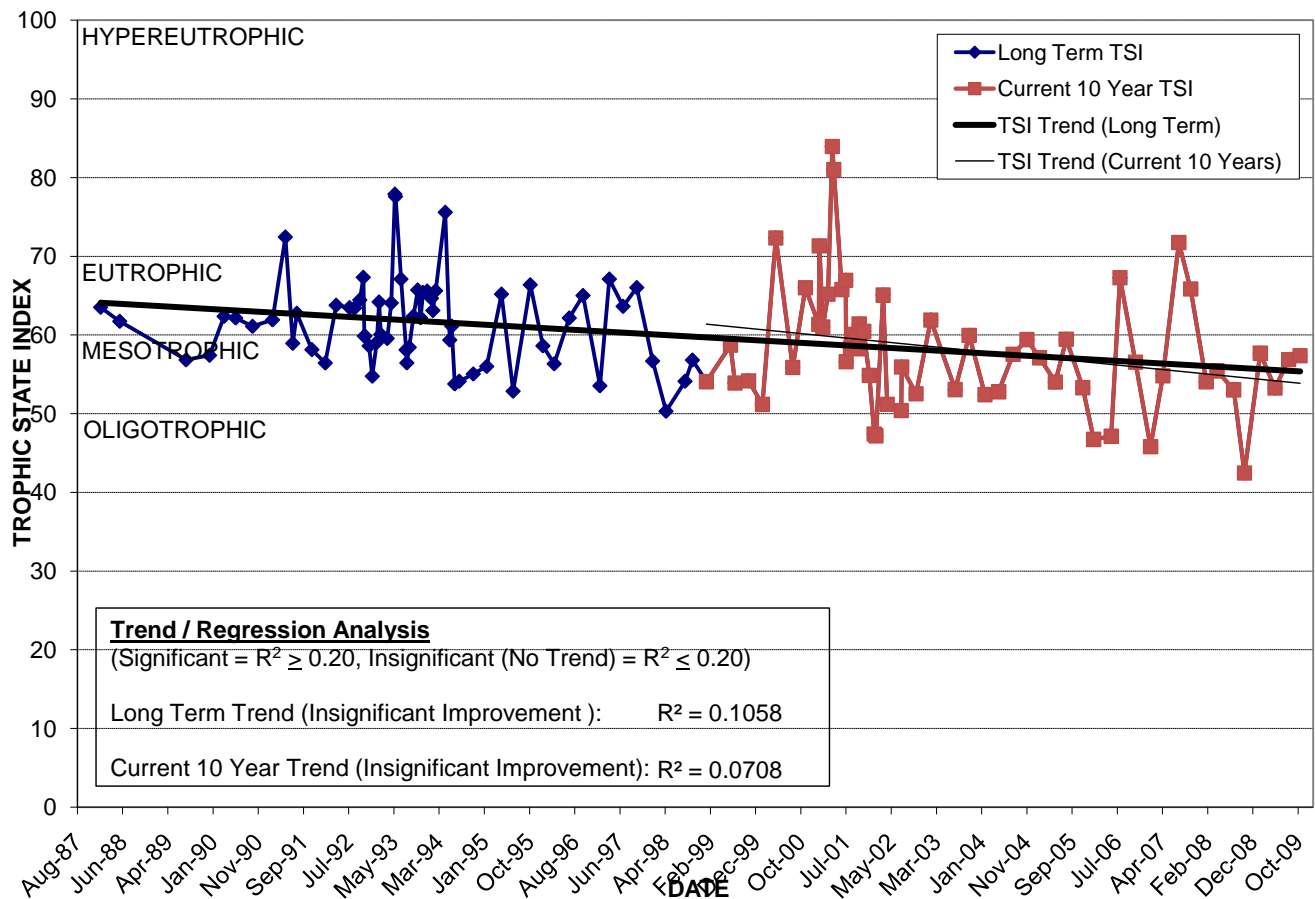
LAKE CHEROKEE

Location: Lat **N 28° 31' 58.8"** Long **W 81° 22' 16.0"**
 Section **36** Township **22S** Range **29E**
 Lake Surface Area: **13 acres**
 Lake Volume: **4,807,900 ft³**
 Shoreline Length: **2,980 ft (908 m)**
 Mean Depth: **8.5 ft (2.6 m)**
 Maximum Depth: **22.4 ft (6.8 m)**

Water Management District: **St. Johns River**
 Drainage Code: **SJ-LE-27**
 Drainage Basin Area: **134 acres**
 Land Use: **40% Res, 7% Com, 27% Vac**
 Drain Wells: **3** Aeration: **No**
 Lake Origin: **Natural**
 Grass Carp (*Ctenopharyngodon idella*): **No**

2009 Water Quality Data		TSI Ranking: 62 (out of 95 lakes)			
	Total Phosphorus (mg/l)	Total Nitrogen (mg/l)	Secchi Depth (m)	Chlorophyll-a (mg/m3)	Trophic State Index
Minimum	0.045	0.64	0.9	10.7	53
Maximum	0.056	0.84	1.1	20.4	58
Average	0.048	0.78	1.0	16.2	56

Long-Term Trophic State Index Values and Linear Regression Trend Line



Location: South of Osceola Ave. and Palmer St. intersection.