

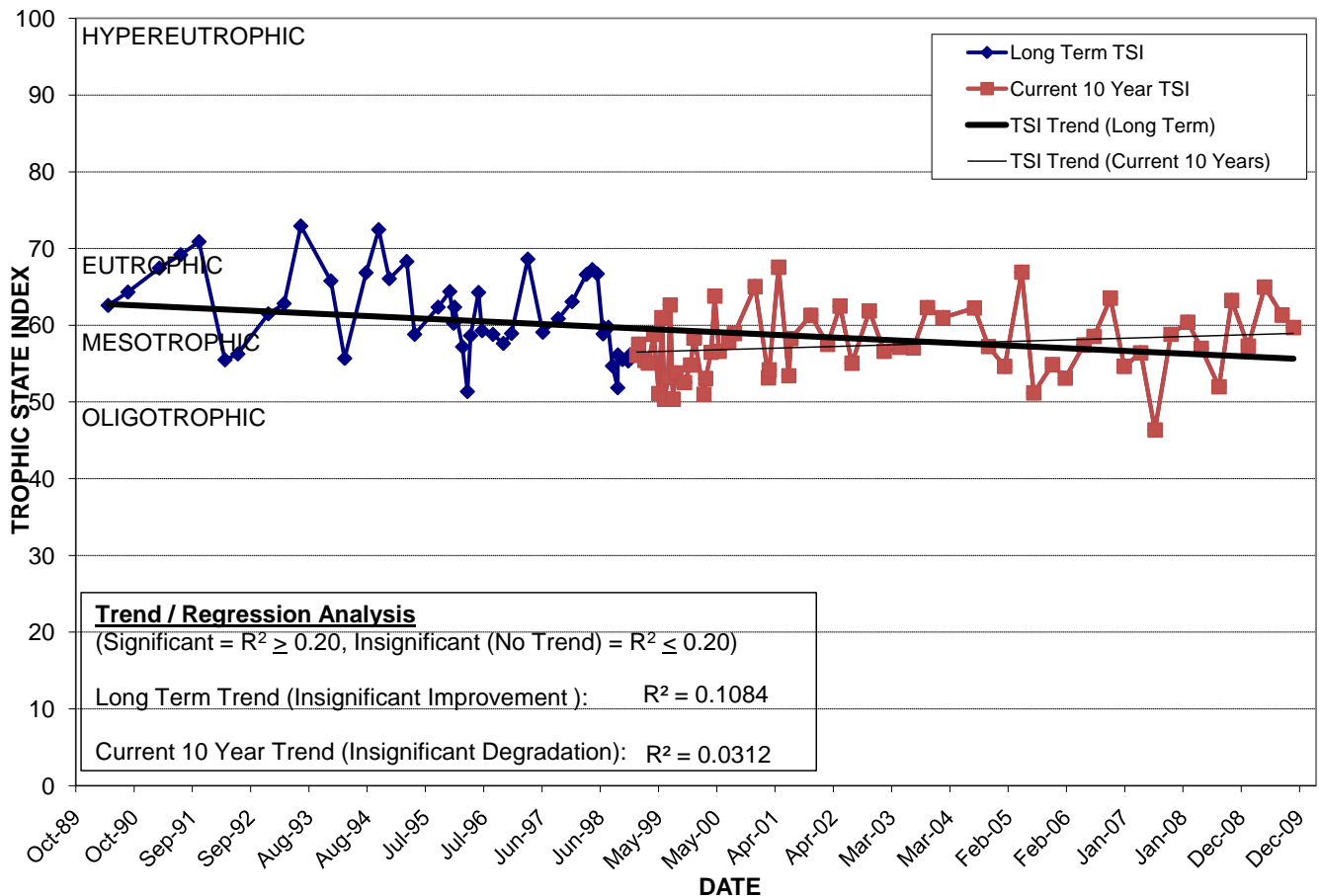
LAKE COPELAND

Location: Lat **N 28° 31' 39.0"** Long **W 81° 22' 28.9"**
 Section **36** Township **22S** Range **29E**
 Lake Surface Area: **15 acres**
 Lake Volume: **5,661,200 ft³**
 Shoreline Length: **2,450 ft (747 m)**
 Mean Depth: **8.7 ft (2.7 m)**
 Maximum Depth: **16.0 ft (4.9 m)**

Water Management District: **St. Johns River**
 Drainage Code: **SJ-LE-29**
 Drainage Basin Area: **58 acres**
 Land Use: **54% Res, 9% Com, 3% Vac**
 Drain Wells: **1** Aeration: **No**
 Lake Origin: **Natural**
 Grass Carp (*Ctenopharyngodon idella*): **No**

2009 Water Quality Data		TSI Ranking: 75 (out of 95 lakes)			
	Total Phosphorus (mg/l)	Total Nitrogen (mg/l)	Secchi Depth (m)	Chlorophyll-a (mg/m3)	Trophic State Index
Minimum	0.030	0.97	0.7	13.6	57
Maximum	0.043	1.58	1.0	42.5	65
Average	0.039	1.20	0.9	23.2	61

Long-Term Trophic State Index Values and Linear Regression Trend Line



Location: Just east of Orange Ave. across from Orlando Regional Hospital.