

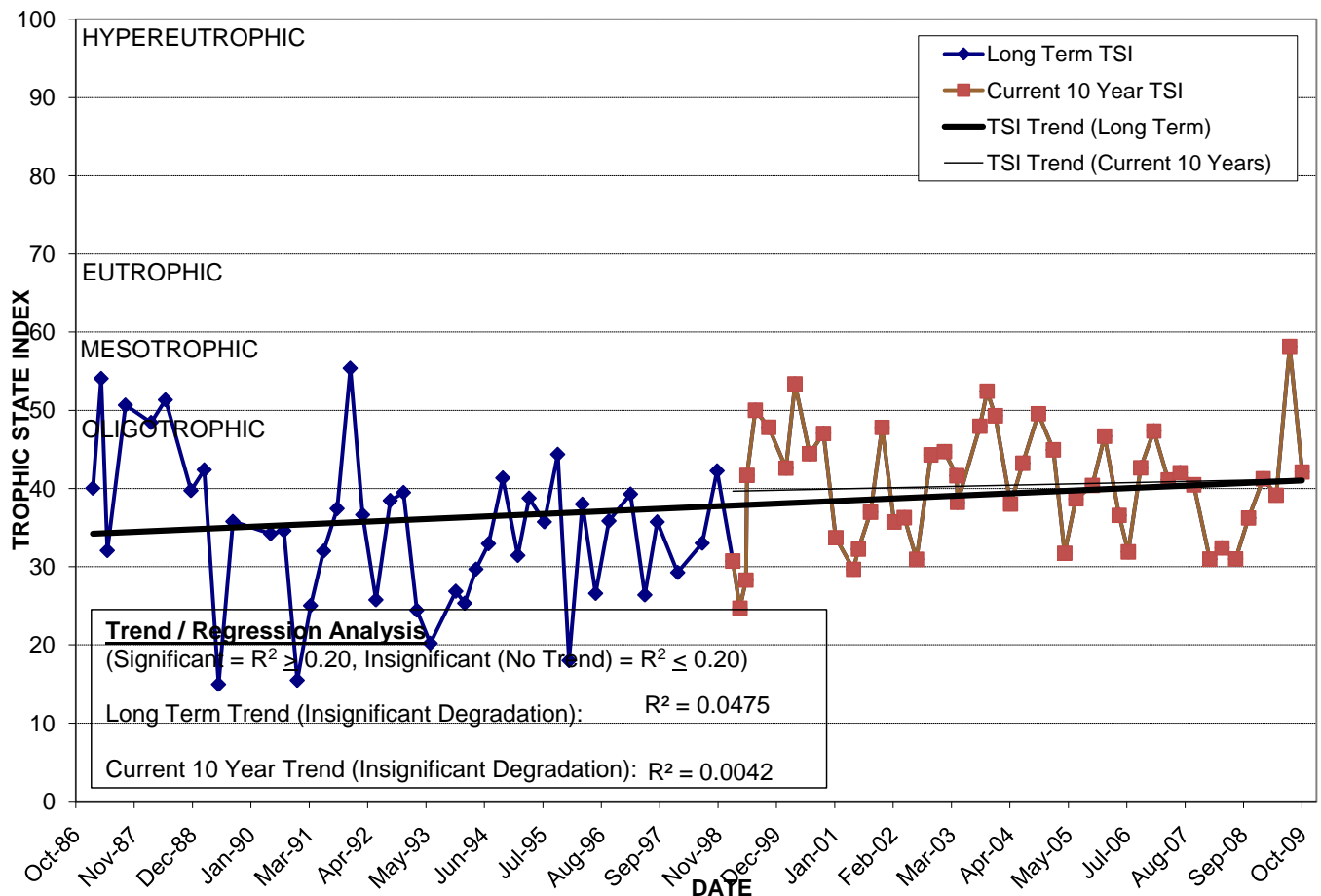
LAKE CANE

Location: Lat **N 28° 29' 06.7"** Long **W 81° 28' 22.1"**
 Section **13** Township **23S** Range **28E**
 Lake Surface Area: **85 acres**
 Lake Volume: **62,169,700 ft³**
 Shoreline Length: **7,396 ft (2,424 m)**
 Mean Depth: **16.7 ft (5.1 m)**
 Maximum Depth: **37.4 ft (11.4 m)**

Water Management District: **South Florida**
 Drainage Code: **KR-SC-06**
 Drainage Basin Area: **211 acres**
 Land Use: **60% Res, 27% Vac**
 Drain Wells: **No** Aeration: **No**
 Lake Origin: **Natural**
 Grass Carp (*Ctenopharyngodon idella*): **No**

2009 Water Quality Data		TSI Ranking: 32 (out of 95 lakes)			
	Total Phosphorus (mg/l)	Total Nitrogen (mg/l)	Secchi Depth (m)	Chlorophyll-a (mg/m ³)	Trophic State Index
Minimum	0.012	0.64	0.7	2.5	39
Maximum	0.016	1.25	2.0	26.2	58
Average	0.014	0.91	1.4	11.2	45

Long-Term Trophic State Index Values and Linear Regression Trend Line



Location: Northeast of Turkey Lake Rd. and Vineland Rd. intersection.