

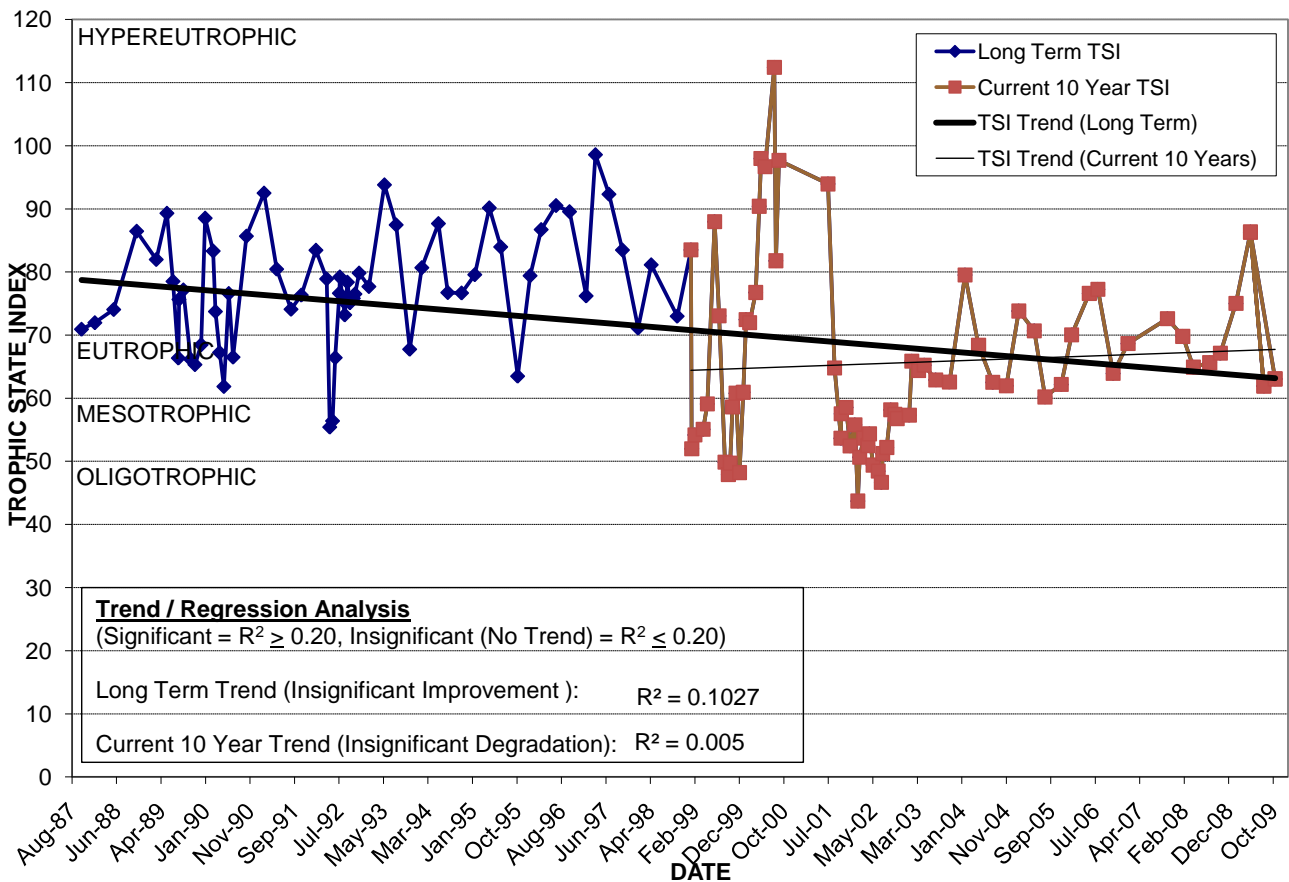
# LAKE DAVIS

Location: Lat **N 28° 31' 52.7"** Long **W 81° 22' 00.5"**  
 Section **36** Township **22S** Range **29E**  
 Lake Surface Area: **17 acres**  
 Lake Volume: **4,603,127 ft<sup>3</sup>**  
 Shoreline Length: **4,304 ft (1,312 m)**  
 Mean Depth: **6.2 ft (1.9 m)**  
 Maximum Depth:

Water Management District: **St. Johns River**  
 Drainage Code: **SJ-LE-26**  
 Drainage Basin Area: **122 acres**  
 Land Use: **53% Res, 3% Com, 7% Vac**  
 Drain Wells: **1** Aeration: **No**  
 Lake Origin: **Natural**  
 Grass Carp (*Ctenopharyngodon idella*): **No**

2009 Water Quality Data		TSI Ranking: 94 (out of 95 lakes)			
	Total Phosphorus (mg/l)	Total Nitrogen (mg/l)	Secchi Depth (m)	Chlorophyll-a (mg/m3)	Trophic State Index
Minimum	0.049	1.15	0.4	21.2	62
Maximum	0.242	3.66	0.8	112.0	86
Average	0.115	1.95	0.6	50.9	71

**Long-Term Trophic State Index Values and Linear Regression Trend Line**



**Location:** East side of Summerlin Ave., south of Anderson St.