

LAKE DOT

Location: Lat **N 28° 33' 08.2"** Long **W 81° 23' 12.4"**

Section **26** Township **22S** Range **29E**

Lake Surface Area: **6 acres**

Lake Volume: **2,200,000 ft³**

Shoreline Length: **1,770 ft (539 m)**

Mean Depth: **9.1 ft (2.8 m)**

Maximum Depth:

Water Management District: **St. Johns River**

Drainage Code: **SJ-HB-29**

Drainage Basin Area: **295 acres**

Land Use: **20% Res, 26% Com, 36% Vac**

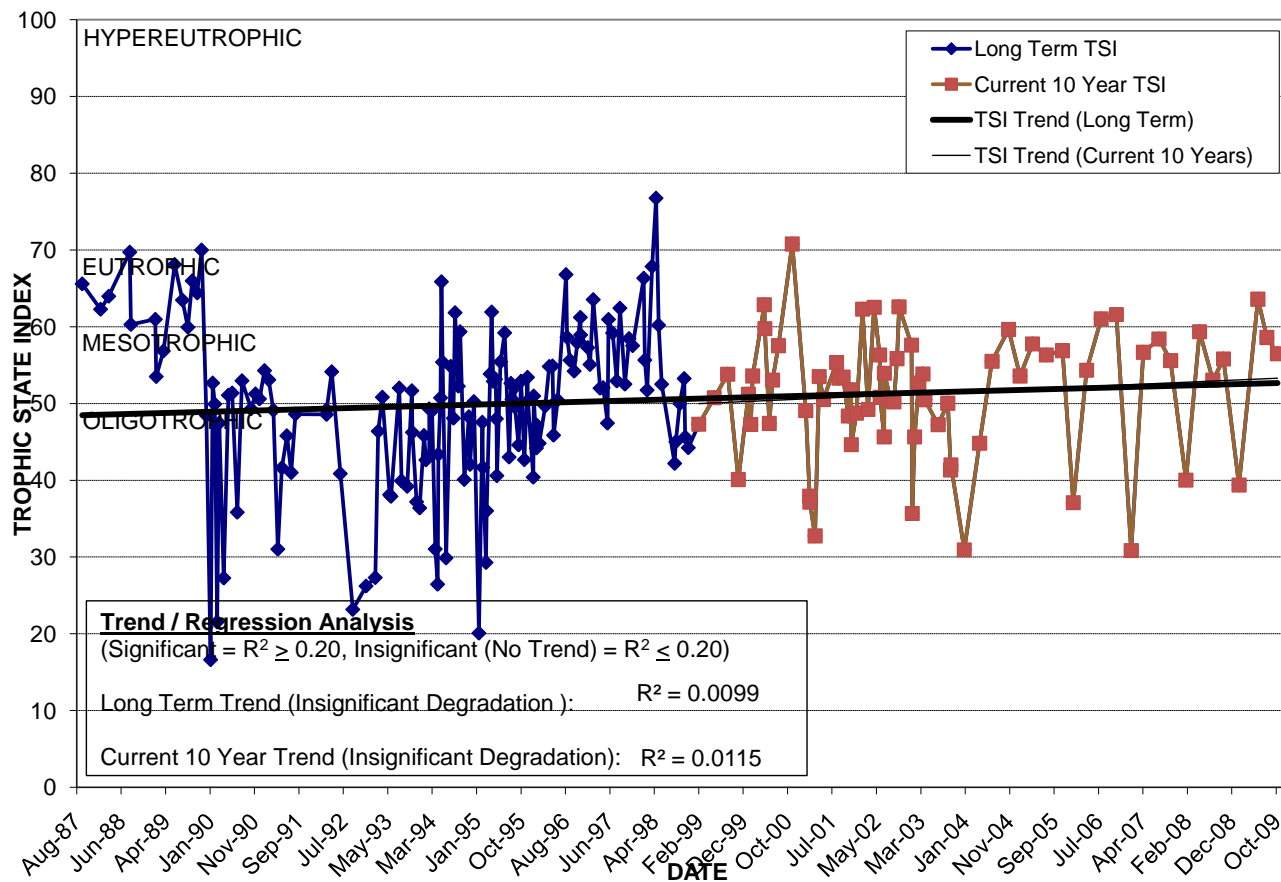
Drain Wells: **No** Aeration: **No**

Lake Origin: **Natural**

Grass Carp (*Ctenopharyngodon idella*): **Yes**

| 2009 Water Quality Data | | TSI Ranking: 54 (out of 95 lakes) | | | |
|-------------------------|----------------------------|-----------------------------------|---------------------|---------------------------------------|------------------------|
| | Total Phosphorus (mg/l) | Total Nitrogen (mg/l) | Secchi Depth (m) | Chlorophyll-a (mg/m ³) | Trophic State Index |
| Minimum | 0.037 | 0.86 | 1.0 | 4.4 | 39 |
| Maximum | 0.088 | 1.54 | 2.9 | 33.2 | 64 |
| Average | 0.062 | 1.07 | 1.5 | 19.6 | 55 |

Long-Term Trophic State Index Values and Linear Regression Trend Line



Location: On the south side of Colonial Dr., just north of the Amway Arena.