

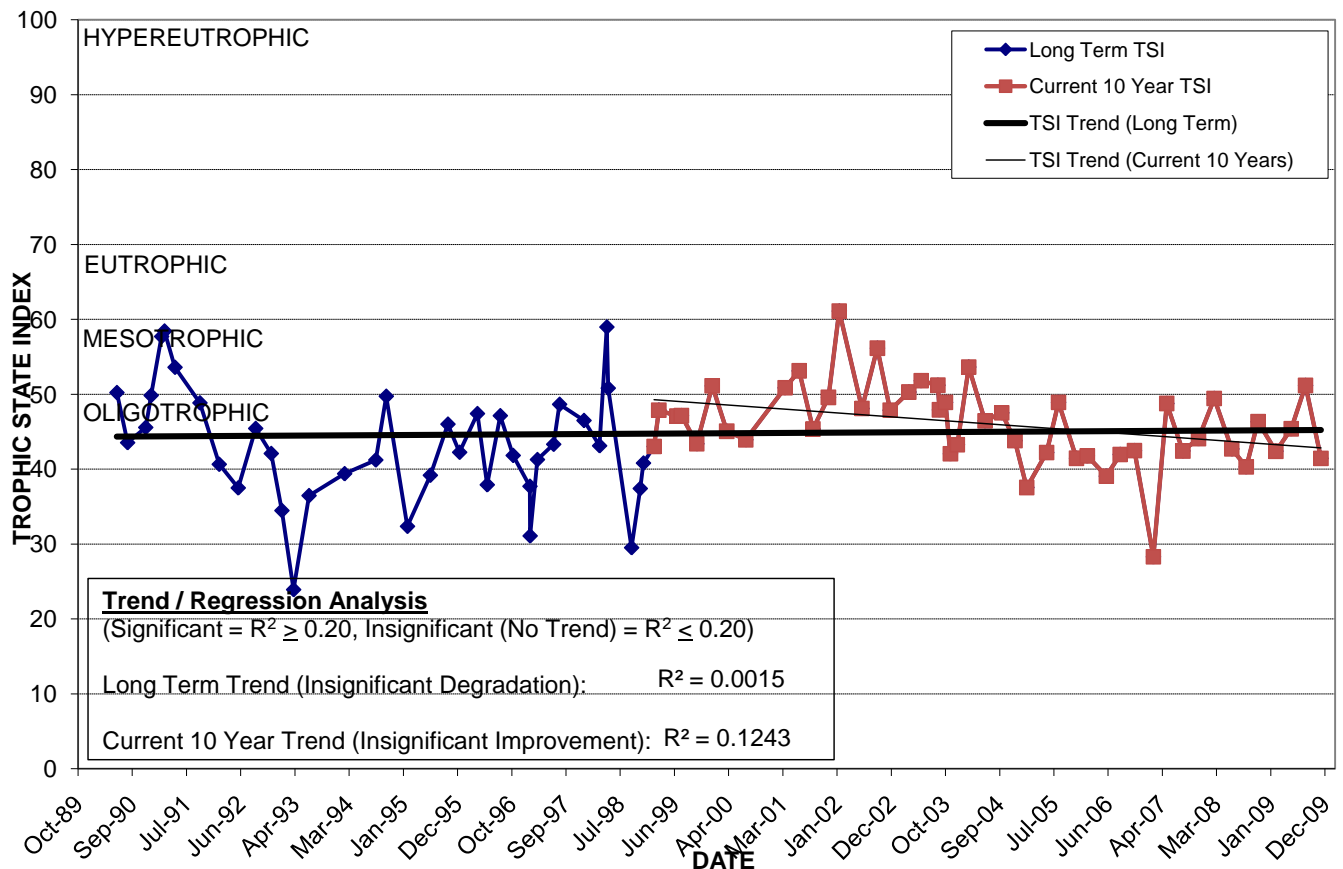
# LAKE DRUID

Location: Lat **N 28° 33' 37.4"** Long **W 81° 20' 59.3"**  
 Section **19** Township **22S** Range **30E**  
 Lake Surface Area: **17 acres**  
 Lake Volume: **5,600,000 ft<sup>3</sup>**  
 Shoreline Length: **3,848 ft (1,173 m)**  
 Mean Depth: **7.6 ft (2.3 m)**  
 Maximum Depth:

Water Management District: **St. Johns River**  
 Drainage Code: **SJ-HB-33**  
 Drainage Basin Area: **151 acres**  
 Land Use: **41% Res, 48% Com**  
 Drain Wells: **No** Aeration: **No**  
 Lake Origin: **Natural**  
 Grass Carp (*Ctenopharyngodon idella*): **Yes**

2009 Water Quality Data		TSI Ranking: 31 (out of 95 lakes)			
	Total Phosphorus (mg/l)	Total Nitrogen (mg/l)	Secchi Depth (m)	Chlorophyll-a (mg/m <sup>3</sup> )	Trophic State Index
Minimum	0.025	0.48	1.4	4.6	41
Maximum	0.032	0.67	2.0	18.7	51
Average	0.028	0.60	1.8	10.2	45

**Long-Term Trophic State Index Values and Linear Regression Trend Line**



**Location:** East of Bumby Ave. between Chelsea St. and Weber St. in the Audubon Park neighborhood.