

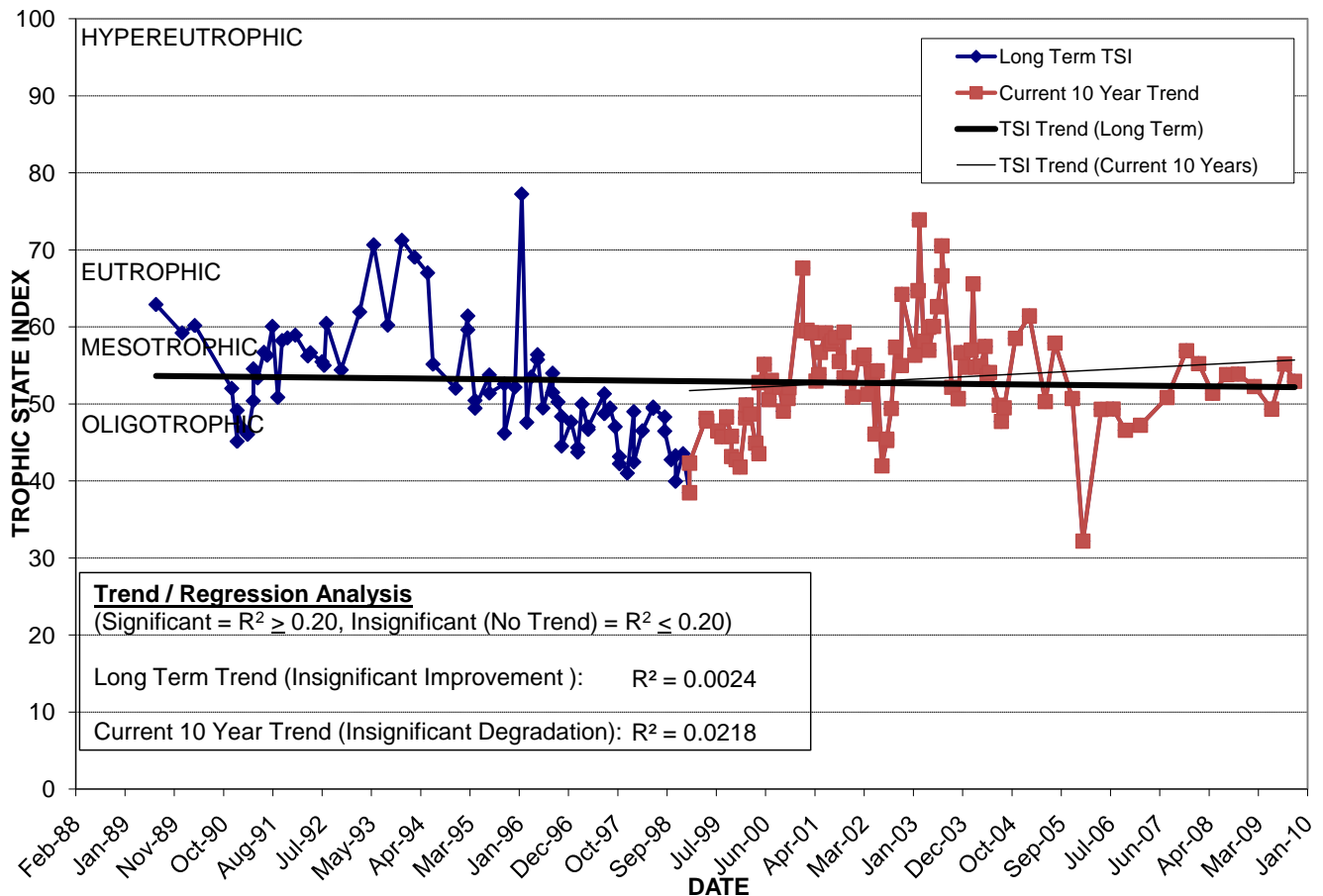
# LAKE EOLA

Location: Lat **N 28° 32' 39.1"** Long **W 81° 22' 21.4"**  
 Section **25** Township **22S** Range **29E**  
 Lake Surface Area: **28 acres**  
 Lake Volume: **13,876,400 ft<sup>3</sup>**  
 Shoreline Length: **4,493 ft (1,369 m)**  
 Mean Depth: **11.4 ft (3.5 m)**  
 Maximum Depth: **23.7 ft (7.2 m)**

Water Management District: **St. Johns River**  
 Drainage Code: **SJ-HB-32**  
 Drainage Basin Area: **320 acres**  
 Land Use: **29% Res, 27% Com, 23% Vac**  
 Drain Wells: **3** Aeration: **Yes** (installed 10/86)  
 Lake Origin: **Natural**  
 Grass Carp (*Ctenopharyngodon idella*): **No**

2009 Water Quality Data		TSI Ranking: 49 (out of 95 lakes)			
	Total Phosphorus (mg/l)	Total Nitrogen (mg/l)	Secchi Depth (m)	Chlorophyll-a (mg/m <sup>3</sup> )	Trophic State Index
Minimum	0.033	0.59	1.1	9.4	49
Maximum	0.058	0.88	1.5	24.8	55
Average	0.045	0.70	1.3	15.5	52

**Long-Term Trophic State Index Values and Linear Regression Trend Line**



**Location:** Landmark downtown lake that is bordered by Robinson St. to the north, Central Blvd. to the south, and Rosalind Ave. to the west.