

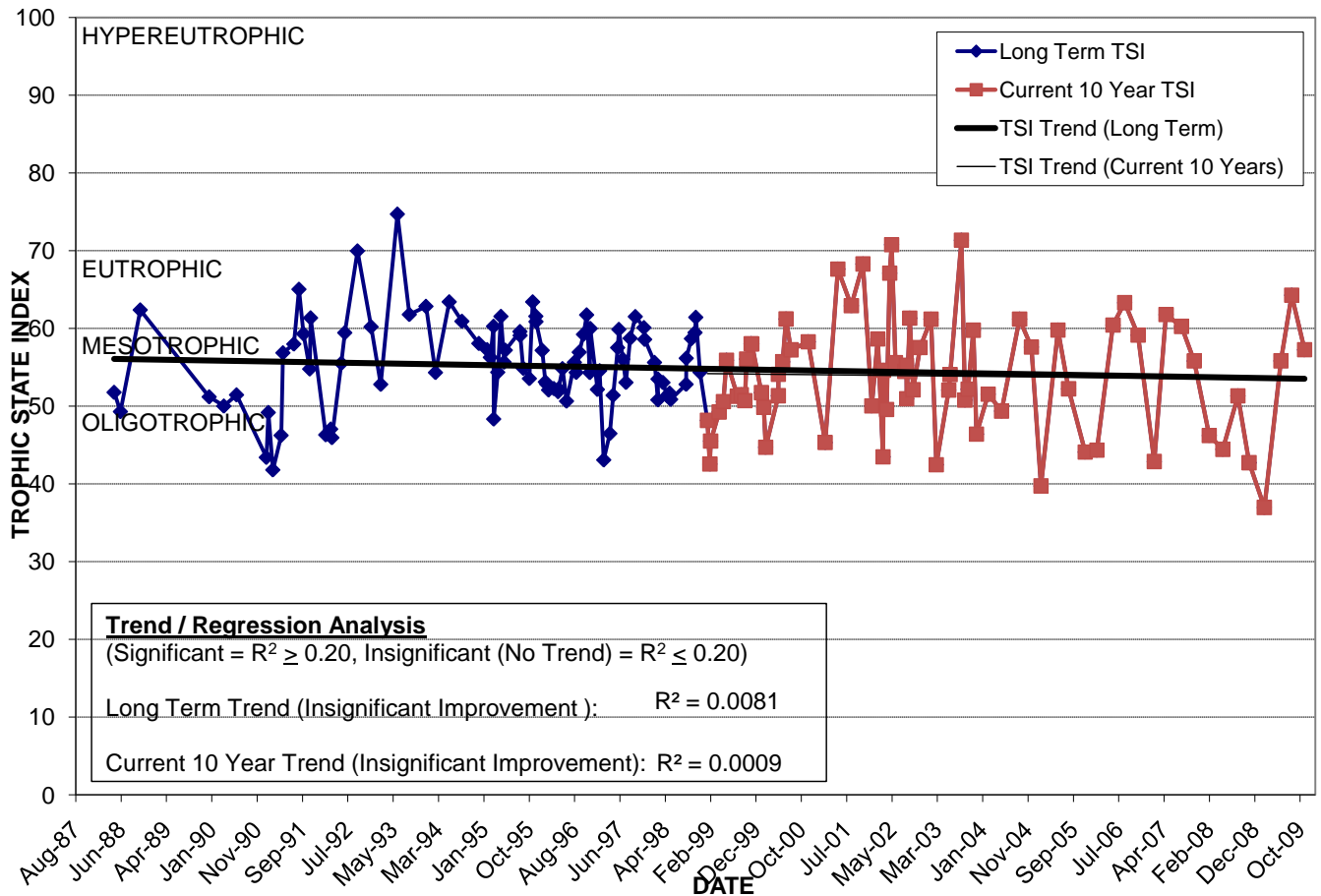
LAKE ESTELLE WEST

Location: Lat **N 28° 34' 29.6"** Long **W 81° 22' 01.2"**
 Section **13** Township **22S** Range **29E**
 Lake Surface Area: **24 acres**
 Lake Volume: **12,077,500 ft³**
 Shoreline Length: **4,960 ft (1,511 m)**
 Mean Depth: **11.4 ft (3.5 m)**
 Maximum Depth: **23.7 ft (7.2 m)**

Water Management District: **St. Johns River**
 Drainage Code: **SJ-HB-22**
 Drainage Basin Area: **183 acres ***
 Land Use: **33% Res, 40% Com, 23% Vac ***
 Drain Wells: **1** Aeration: **No**
 Lake Origin: **Natural**
 Grass Carp (*Ctenopharyngodon idella*): **Yes**

2009 Water Quality Data		TSI Ranking: 52 (out of 95 lakes)			
	Total Phosphorus (mg/l)	Total Nitrogen (mg/l)	Secchi Depth (m)	Chlorophyll-a (mg/m ³)	Trophic State Index
Minimum	0.020	0.65	0.7	3.2	37
Maximum	0.044	1.13	2.7	31.6	64
Average	0.034	0.95	1.4	17.9	54

Long-Term Trophic State Index Values and Linear Regression Trend Line



Location: Split by Mills Ave. (US 17-92) between Rollins St. and Dorchester St., adjacent to (east of) Florida Hospital.