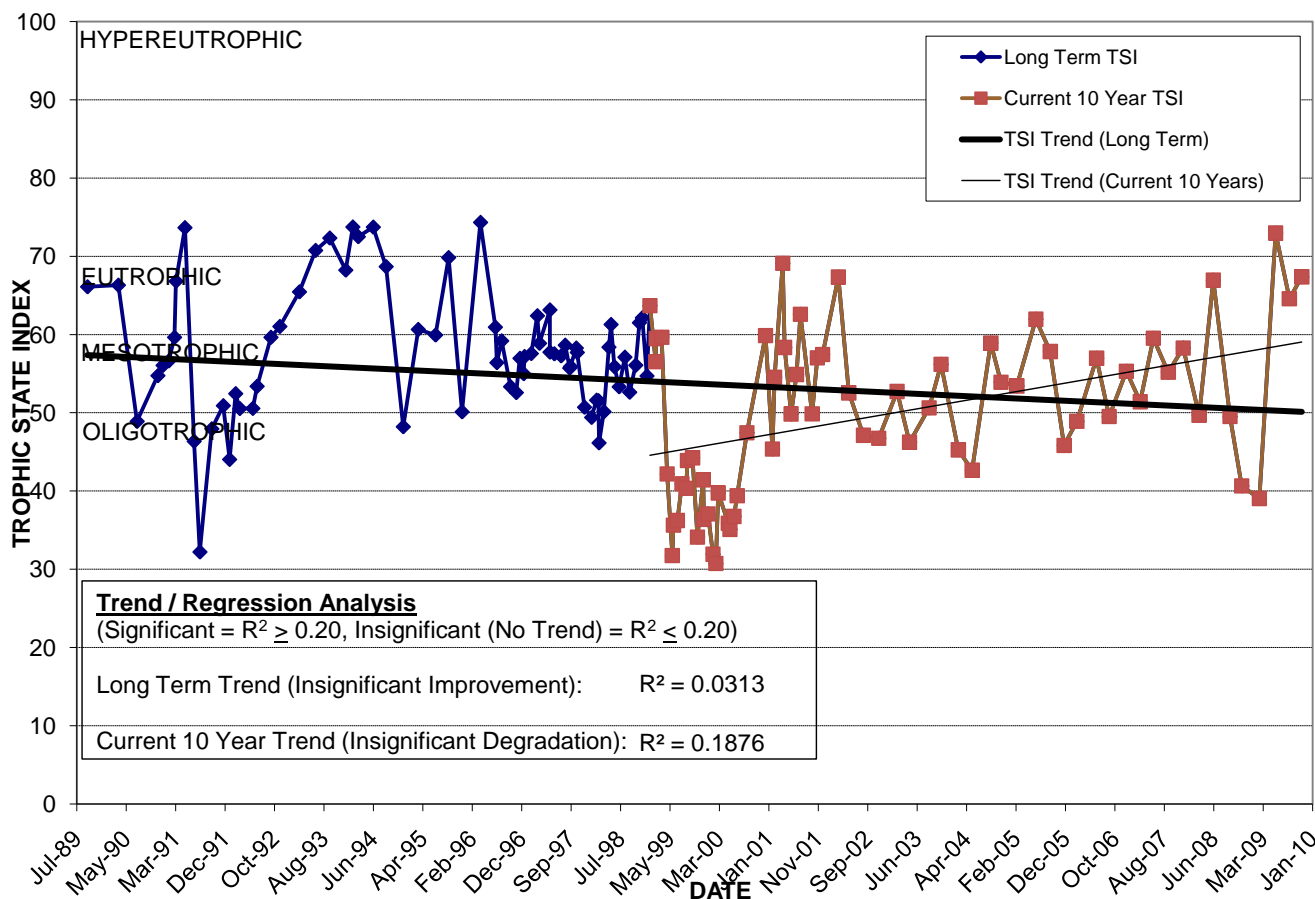


LAKE ARNOLD

Location: Lat N 28° 31' 51.6" Long W 81° 20' 31.2" Section 32 Township 22S Range 30E Lake Surface Area: 26 acres Lake Volume: 23,298,500 ft³ Shoreline Length: 4,226 ft (1,288 m) Mean Depth: 20.6 ft (6.3 m) Maximum Depth: 41.4 ft (12.6 m)	Water Management District: St. Johns River Drainage Code: SJ-LE-12 Drainage Basin Area: 282 acres Land Use: 70% Res, 4% Com, 1% Vac Drain Wells: 1 Aeration: No Lake Origin: Natural Grass Carp (<i>Ctenopharyngodon idella</i>): Yes
--	---

2009 Water Quality Data		TSI Ranking: 77 (out of 95 lakes)			
	Total Phosphorus (mg/l)	Total Nitrogen (mg/l)	Secchi Depth (m)	Chlorophyll-a (mg/m ³)	Trophic State Index
Minimum	0.014	0.65	0.5	6.2	39
Maximum	0.042	1.74	2.3	43.5	73
Average	0.034	1.16	1.0	31.5	61

Long-Term Trophic State Index Values and Linear Regression Trend Line



Location: Found mostly in Dover Shores, east of Crystal Lake Dr. between Clemwood Dr. and Hargill Dr.