

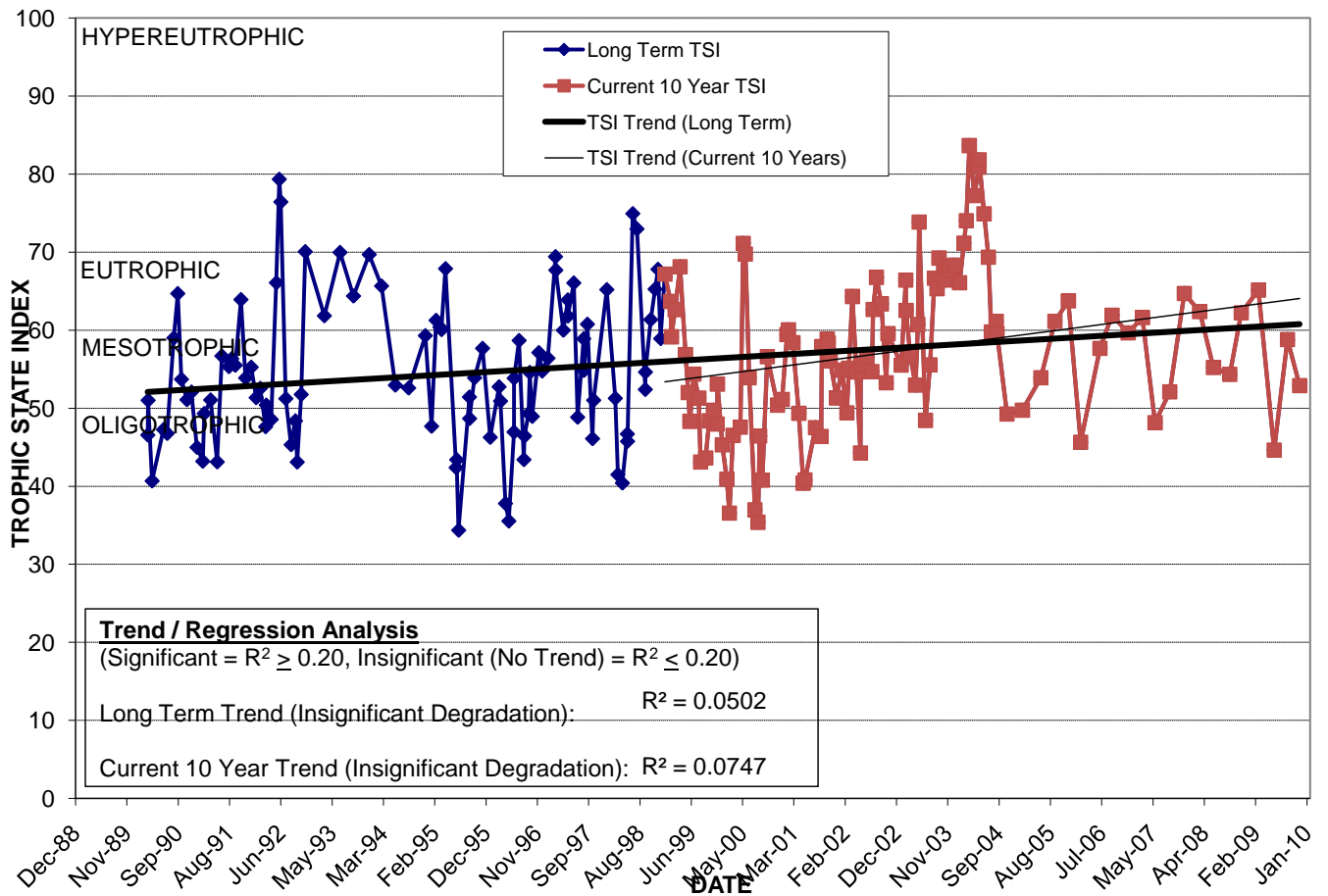
LAKE GILES

Location: Lat **N 28° 31' 48.4"** Long **W 81° 20' 03.1"**
 Section **32** Township **22S** Range **30E**
 Lake Surface Area: **29 acres**
 Lake Volume: **22,214,376 ft³**
 Shoreline Length: **4,163 ft (1,269 m)**
 Mean Depth: **17.8 ft (5.4 m)**
 Maximum Depth: **36.6 ft (11.2 m)**

Water Management District: **St. Johns River**
 Drainage Code: **SJ-LE-11**
 Drainage Basin Area: **265 acres**
 Land Use: **76% Res, 7% Com, 1% Vac**
 Drain Wells: **1** Aeration: **No**
 Lake Origin: **Natural**
 Grass Carp (*Ctenopharyngodon idella*): **No**

2009 Water Quality Data		TSI Ranking: 57 (out of 95 lakes)			
	Total Phosphorus (mg/l)	Total Nitrogen (mg/l)	Secchi Depth (m)	Chlorophyll-a (mg/m3)	Trophic State Index
Minimum	0.028	0.58	0.7	5.5	45
Maximum	0.047	1.26	1.6	30.5	65
Average	0.036	0.88	1.0	15.4	55

Long-Term Trophic State Index Values and Linear Regression Trend Line



Location: At the very south end of Springview Dr. off Lake Underhill Rd. in the Dover Shores West neighborhood.