

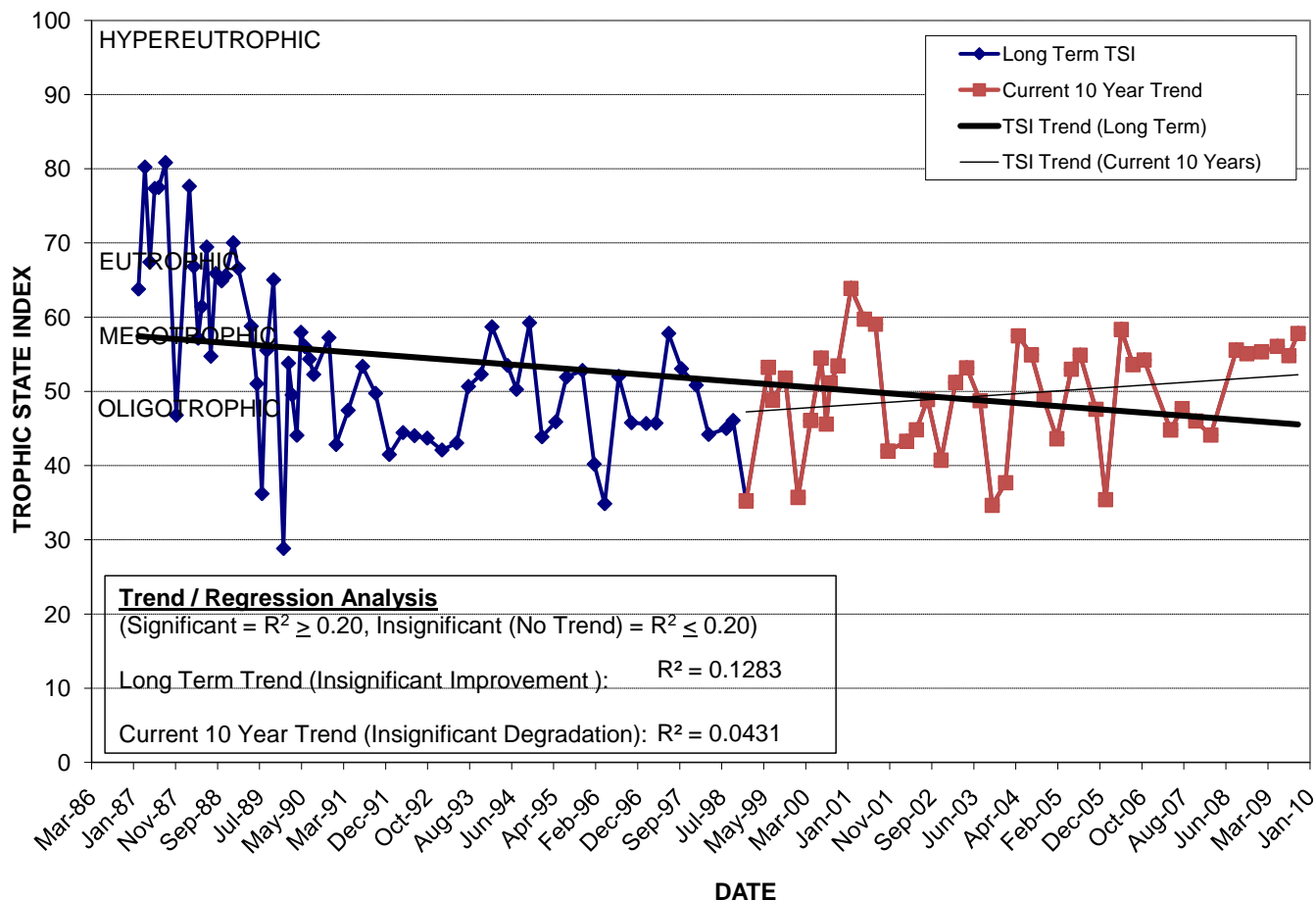
LAKE GREENWOOD

Location: Lat **N 28° 32' 02.8"** Long **W 81° 21' 36.0"**
 Section **36** Township **22S** Range **29E**
 Lake Surface Area: **5 acres**
 Lake Volume: **2,700,000 ft³**
 Shoreline Length: **3,441 ft (1,049 m)**
 Mean Depth: **13.9 ft (4.2 m)**
 Maximum Depth:

Water Management District: **St. Johns River**
 Drainage Code: **SJ-LE-14**
 Drainage Basin Area: **560 acres**
 Land Use: **39% Res, 8% Com, 29% Vac**
 Drain Wells: **5** Aeration: **Yes** (installed 10/88)
 Lake Origin: **Natural**
 Grass Carp (*Ctenopharyngodon idella*): **Yes**

2009 Water Quality Data		TSI Ranking: 60 (out of 95 lakes)			
	Total Phosphorus (mg/l)	Total Nitrogen (mg/l)	Secchi Depth (m)	Chlorophyll-a (mg/m3)	Trophic State Index
Minimum	0.078	0.89	1.0	7.5	55
Maximum	0.130	0.93	1.3	24.3	58
Average	0.100	0.91	1.1	13.4	56

Long-Term Trophic State Index Values and Linear Regression Trend Line



Location: Just south of Anderson St. between Mills Ave. and Hampton Ave. next to Greenwood Cemetery.