

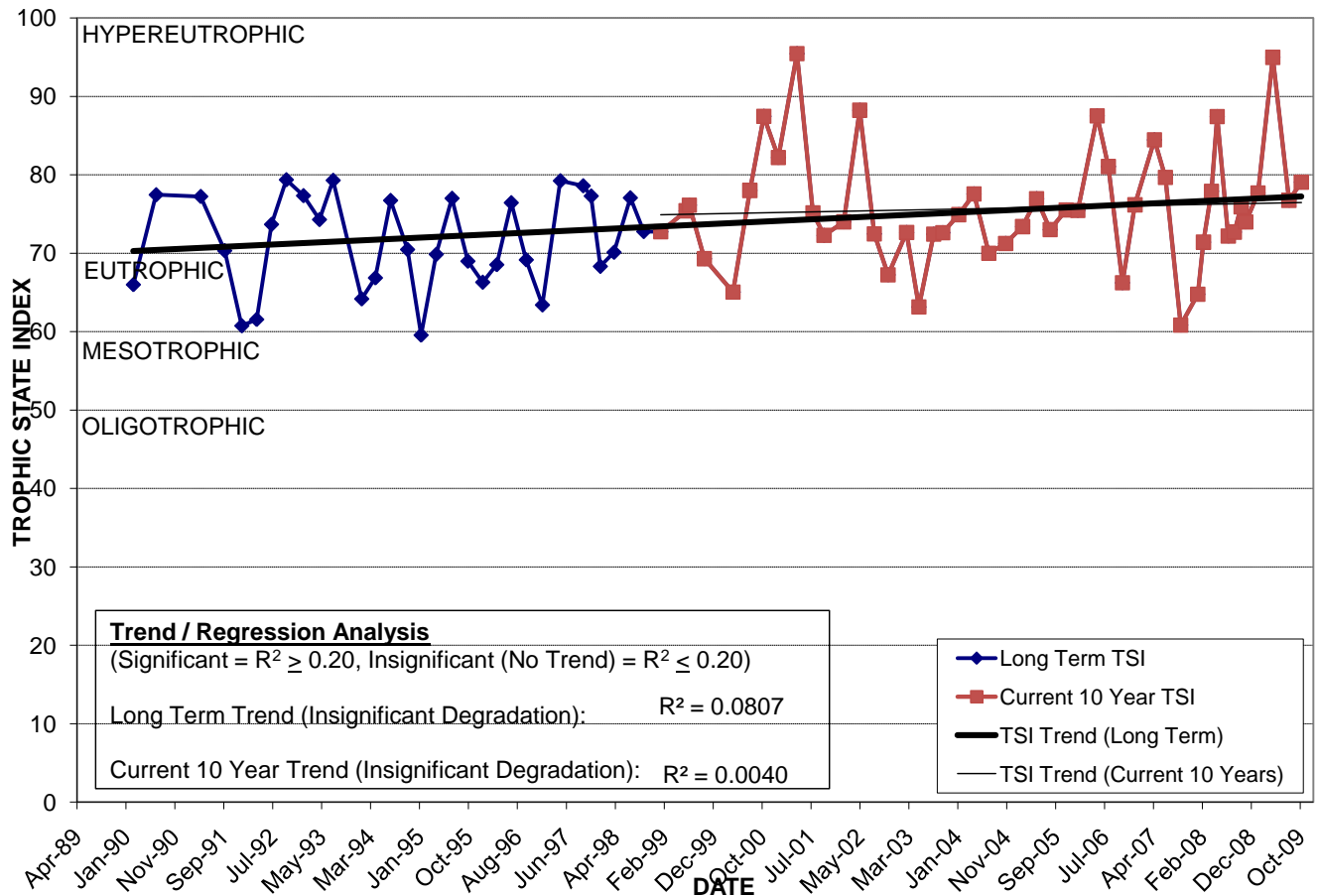
LAKE KOZART

Location: Lat **N 28° 31' 32.5"** Long **W 81° 26' 19.7"**
 Section **32** Township **22S** Range **29E**
 Lake Surface Area: **7 acres**
 Lake Volume: **1,378,000 ft³**
 Shoreline Length: **7,179 ft (2,188 m)**
 Mean Depth: **4.3 ft (1.3 m)**
 Maximum Depth: **5.9 ft (1.8 m)**

Water Management District: **South Florida**
 Drainage Code: **KR-SC-15**
 Drainage Basin Area: **143 acres**
 Land Use: **41% Res, 4% Com, 24% Vac**
 Drain Wells: **No** Aeration: **No**
 Lake Origin: **Excavation**
 Grass Carp (*Ctenopharyngodon idella*): **No**

2009 Water Quality Data		TSI Ranking: 95 (out of 95 lakes)			
	Total Phosphorus (mg/l)	Total Nitrogen (mg/l)	Secchi Depth (m)	Chlorophyll-a (mg/m ³)	Trophic State Index
Minimum	0.089	2.16	0.2	20.9	77
Maximum	0.187	4.99	0.4	87.5	95
Average	0.120	3.09	0.3	51.0	82

Long-Term Trophic State Index Values and Linear Regression Trend Line



Location: Just south of Raleigh St. in Carver Shores near Carver Middle School.