

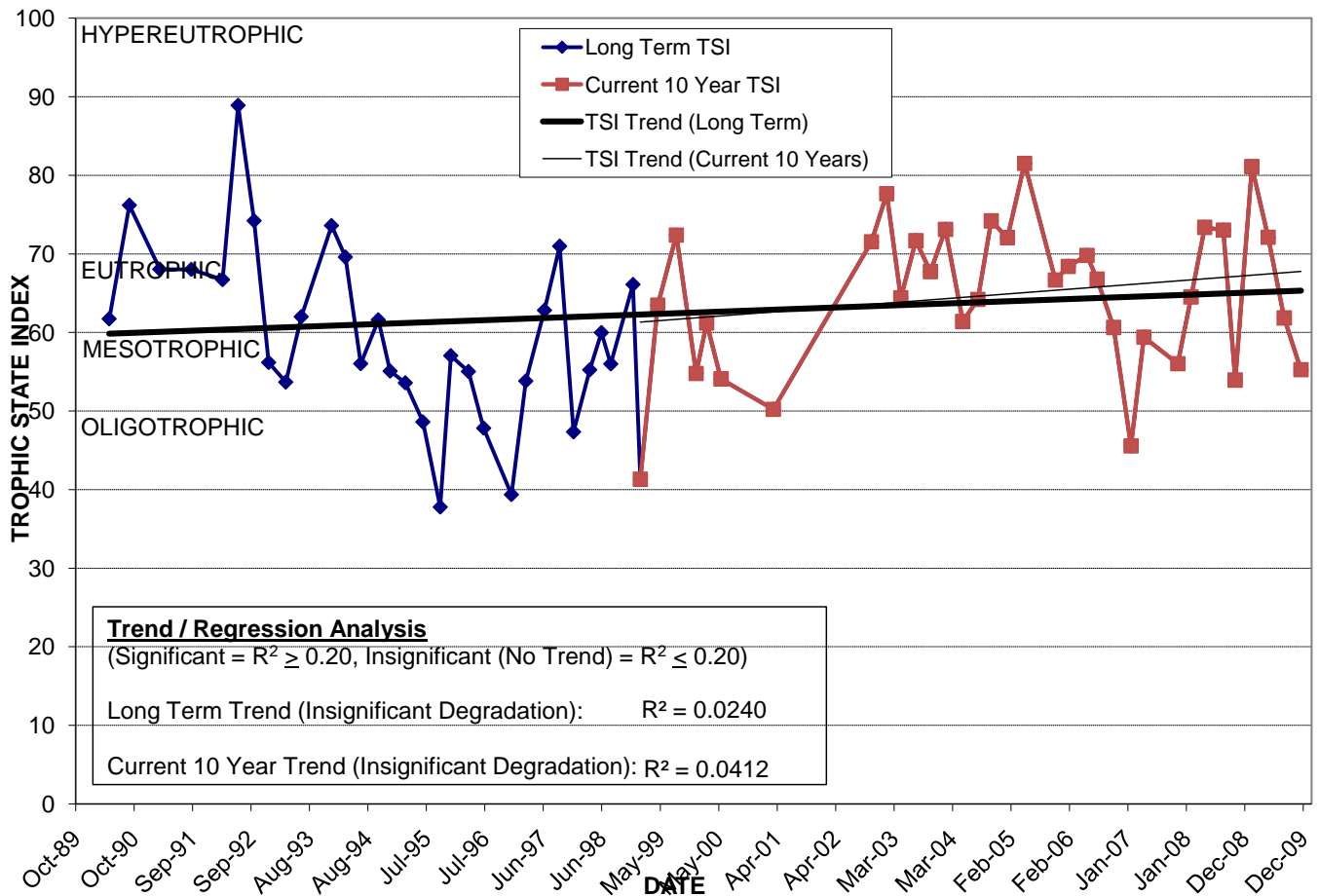
LAKE OF THE WOODS

Location: Lat **N 28° 31' 45.5"** Long **W 81° 22' 47.6"**
 Section **35** Township **22S** Range **29E**
 Lake Surface Area: **4 acres**
 Lake Volume: **420,600 ft³**
 Shoreline Length: **1,930 ft (588 m)**
 Mean Depth: **2.3 ft (0.7 m)**
 Maximum Depth: **6.4 ft (2.0 m)**

Water Management District: **St. Johns River**
 Drainage Code: **SJ-LE-32**
 Drainage Basin Area: **182 acres**
 Land Use: **4% Res, 51% Com, 6% Vac**
 Drain Wells: **4** Aeration: **No**
 Lake Origin: **Natural**
 Grass Carp (*Ctenopharyngodon idella*): **No**

2009 Water Quality Data		TSI Ranking: 92 (out of 95 lakes)			
	Total Phosphorus (mg/l)	Total Nitrogen (mg/l)	Secchi Depth (m)	Chlorophyll-a (mg/m3)	Trophic State Index
Minimum	0.070	1.06	0.3	11.2	55
Maximum	0.181	1.71	1.2	74.6	81
Average	0.117	1.31	0.7	37.4	68

Long-Term Trophic State Index Values and Linear Regression Trend Line



Location: North of Columbia St. between Lucerne Terrace and Silver Ct. (west of Orange Ave.).