

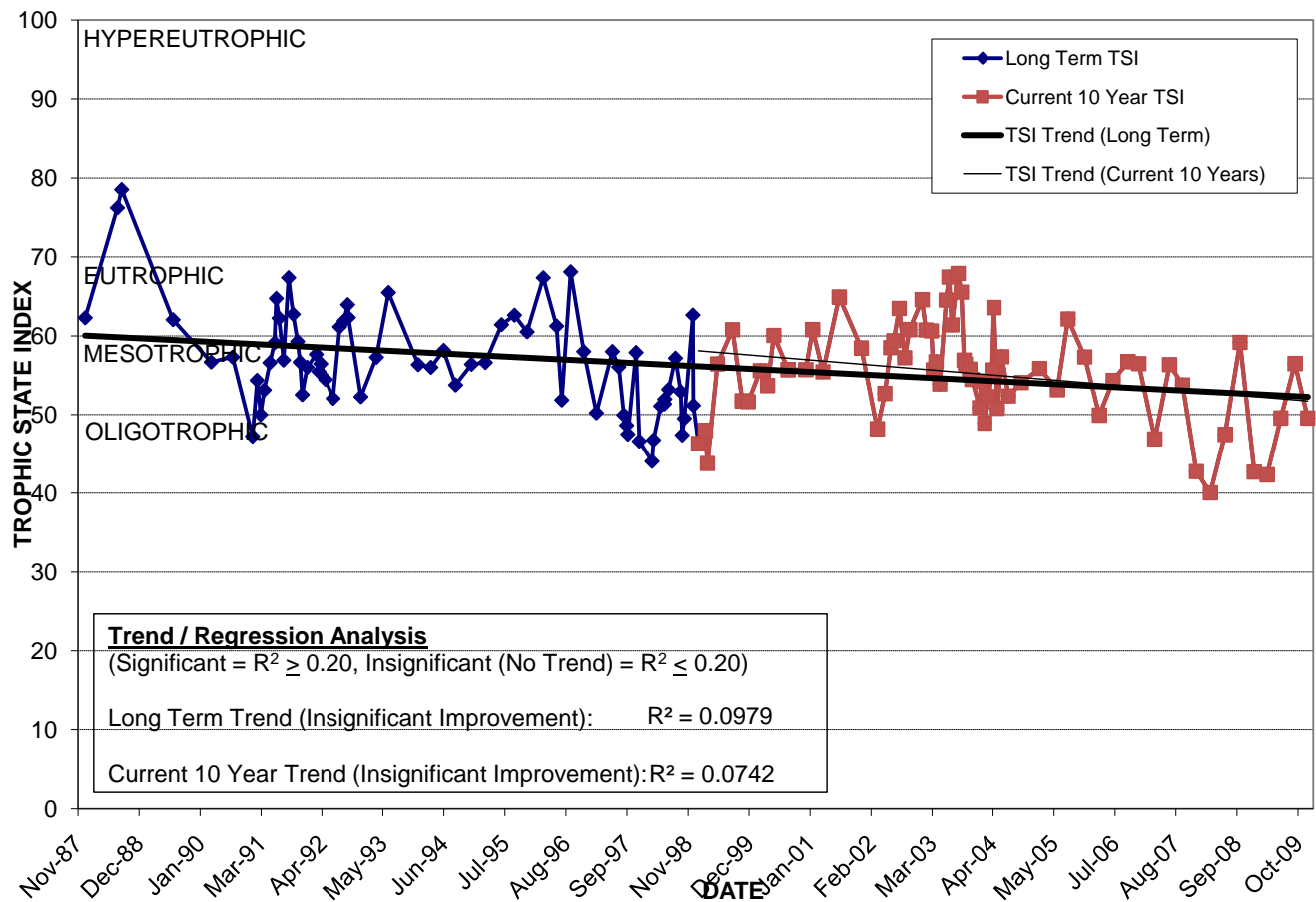
LAKE LURNA

Location: Lat **N 28° 31' 21.7"** Long **W 81° 22' 28.2"**
 Section **1** Township **23S** Range **29E**
 Lake Surface Area: **8 acres**
 Lake Volume: **3,784,200 ft³**
 Shoreline Length: **2,314 ft (705 m)**
 Mean Depth: **11.0 ft (3.4 m)**
 Maximum Depth: **24.6 ft (7.5 m)**

Water Management District: **St. Johns River**
 Drainage Code: **SJ-LE-30**
 Drainage Basin Area: **110 acres**
 Land Use: **36% Res, 25% Com, 9% Vac**
 Drain Wells: **2** Aeration: **Yes** (installed 3/90)
 Lake Origin: **Natural**
 Grass Carp (*Ctenopharyngodon idella*): **No**

2009 Water Quality Data		TSI Ranking: 41 (out of 95 lakes)			
	Total Phosphorus (mg/l)	Total Nitrogen (mg/l)	Secchi Depth (m)	Chlorophyll-a (mg/m ³)	Trophic State Index
Minimum	0.038	0.70	1.1	4.8	42
Maximum	0.042	0.80	2.2	22.9	56
Average	0.041	0.75	1.7	14.7	49

Long-Term Trophic State Index Values and Linear Regression Trend Line



Location: South of Miller St. between Orange Ave. and Delaney Ave.