

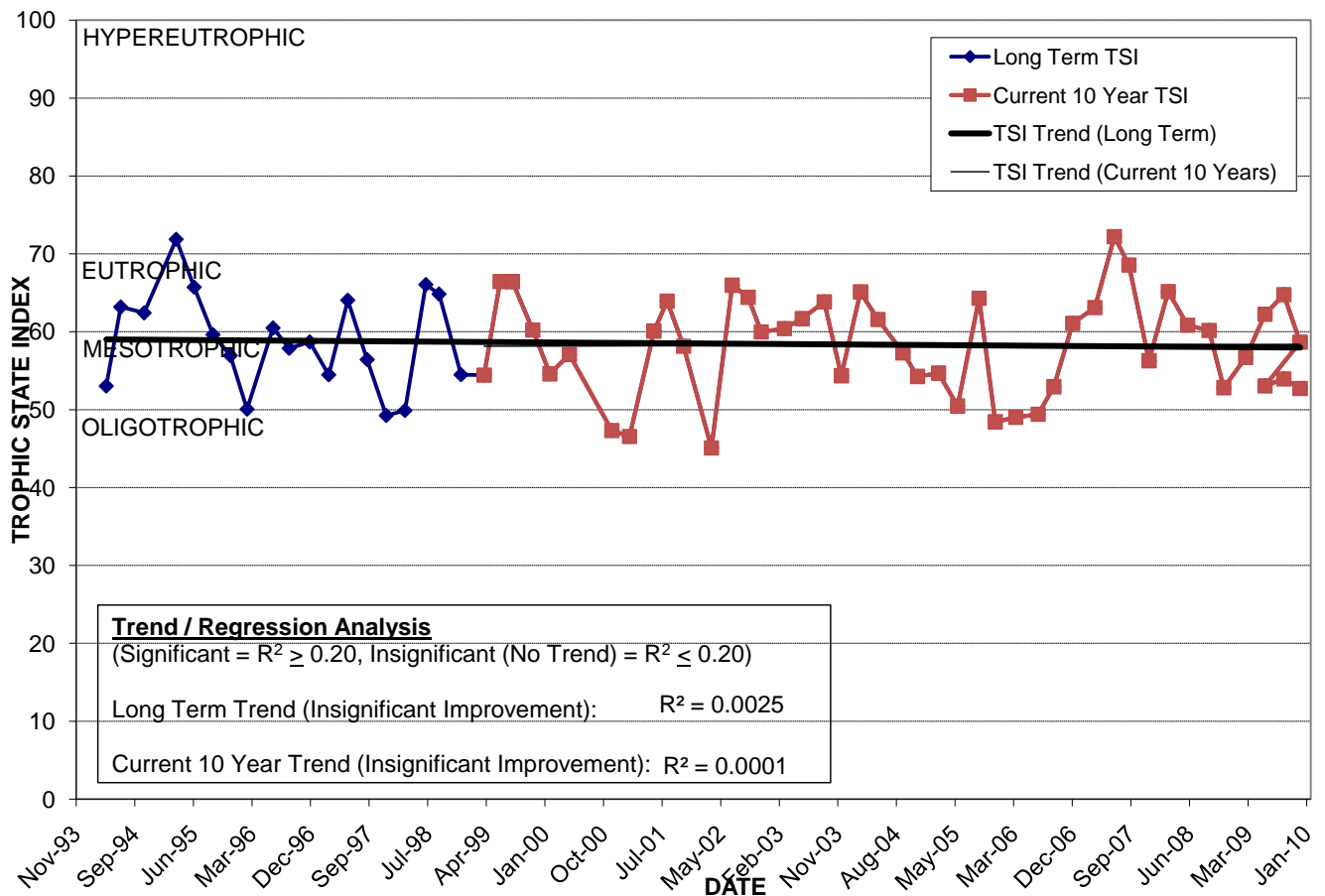
MUD LAKE

Location: Lat **N 28° 23' 21.1"** Long **W 81° 17' 26.9"**
 Section **23** Township **24S** Range **30E**
 Lake Surface Area: **244 acres**
 Lake Volume: **75,129,300 ft³**
 Shoreline Length: **12,563 ft (3,829 m)**
 Mean Depth: **7.1 ft (2.2 m)**
 Maximum Depth: **9.6 ft (2.9 m)**

Water Management District: **South Florida**
 Drainage Code: **SF-BC**
 Drainage Basin Area: **No Data**
 Land Use: **Some Com, Mostly Vac**
 Drain Wells: **No** Aeration: **No**
 Lake Origin: **Natural**
 Grass Carp (*Ctenopharyngodon idella*): **No**

2009 Water Quality Data		TSI Ranking: 66 (out of 95 lakes)			
	Total Phosphorus (mg/l)	Total Nitrogen (mg/l)	Secchi Depth (m)	Chlorophyll-a (mg/m3)	Trophic State Index
Minimum	0.024	0.83	0.6	3.6	53
Maximum	0.086	1.46	1.0	26.5	65
Average	0.052	1.11	0.8	10.4	57

Long-Term Trophic State Index Values and Linear Regression Trend Line



Location: In the southern portion of the Orlando International Airport property.