

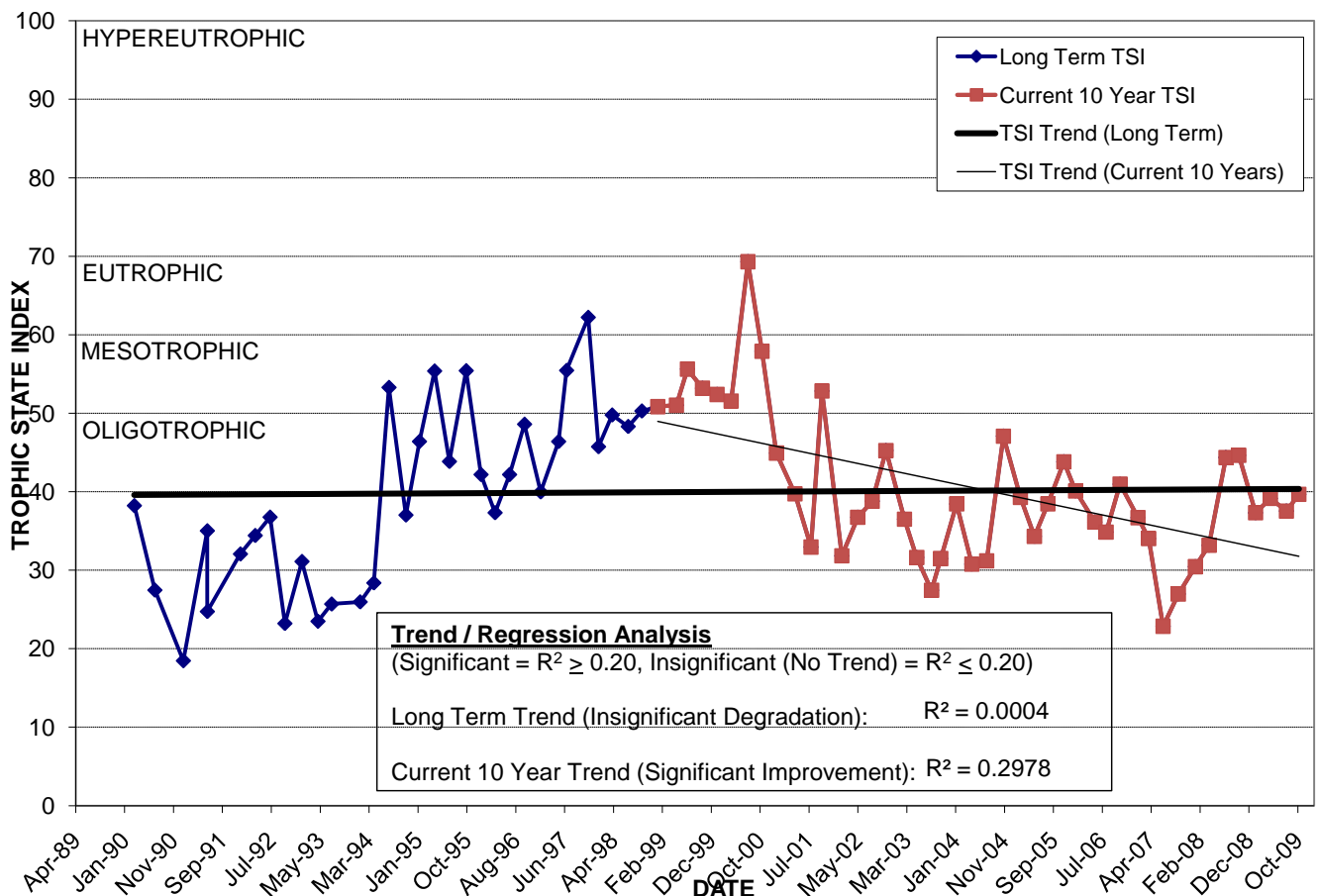
# LAKE PAMELA

Location: Lat **N 28° 31' 14.2"** Long **W 81° 27' 45.0"**  
 Section **1** Township **23S** Range **28E**  
 Lake Surface Area: **14 acres**  
 Lake Volume: **7,200,000 ft<sup>3</sup>**  
 Shoreline Length: **3,515 ft (1,071 m)**  
 Mean Depth: **11.8 ft (3.6 m)**  
 Maximum Depth:

Water Management District: **South Florida**  
 Drainage Code: **SJ-SC-16**  
 Drainage Basin Area: **510 acres**  
 Land Use: **Res, Mostly Com**  
 Drain Wells: **No** Aeration: **No**  
 Lake Origin: **Natural**  
 Grass Carp (*Ctenopharyngodon idella*): **No**

2009 Water Quality Data		TSI Ranking: 17 (out of 95 lakes)			
	Total Phosphorus (mg/l)	Total Nitrogen (mg/l)	Secchi Depth (m)	Chlorophyll-a (mg/m <sup>3</sup> )	Trophic State Index
Minimum	0.013	1.00	1.9	3.3	37
Maximum	0.019	1.32	2.5	4.5	40
Average	0.016	1.15	2.1	3.7	38

**Long-Term Trophic State Index Values and Linear Regression Trend Line**



**Location:** Just west of Kirkman Rd. at the west campus of Valencia Community College.