

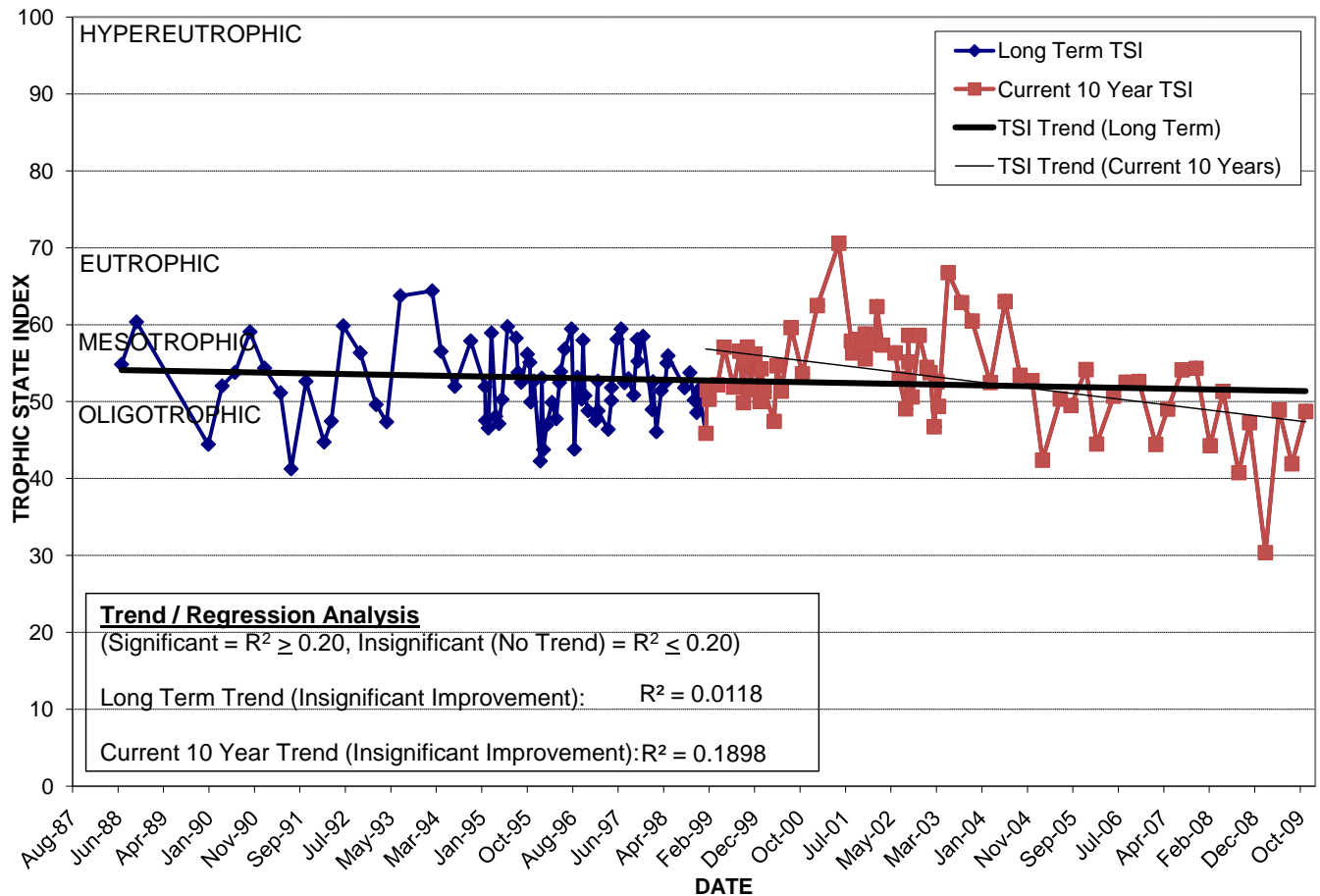
PARK LAKE

Location: Lat **N 28° 33' 15.5"** Long **W 81° 22' 20.6"**
 Section **24** Township **22S** Range **28E**
 Lake Surface Area: **9 acres**
 Lake Volume: **5,700,000 ft³**
 Shoreline Length: **2,394 ft (730 m)**
 Mean Depth: **14.2 ft (4.3 m)**
 Maximum Depth:

Water Management District: **St. Johns River**
 Drainage Code: **SJ-HB-31**
 Drainage Basin Area: **91 acres**
 Land Use: **27% Res, 33% Com, 7% Vac**
 Drain Wells: **1** Aeration: **Yes** (installed 7/76)
 Lake Origin: **Natural**
 Grass Carp (*Ctenopharyngodon idella*): **No**

2009 Water Quality Data		TSI Ranking: 27 (out of 95 lakes)			
	Total Phosphorus (mg/l)	Total Nitrogen (mg/l)	Secchi Depth (m)	Chlorophyll-a (mg/m3)	Trophic State Index
Minimum	0.017	0.44	1.5	2.1	30
Maximum	0.039	0.72	3.0	17.9	49
Average	0.028	0.57	2.1	9.5	42

Long-Term Trophic State Index Values and Linear Regression Trend Line



Location: Just north of Colonial Dr. between Highland Dr. and Park Lake Circle.