

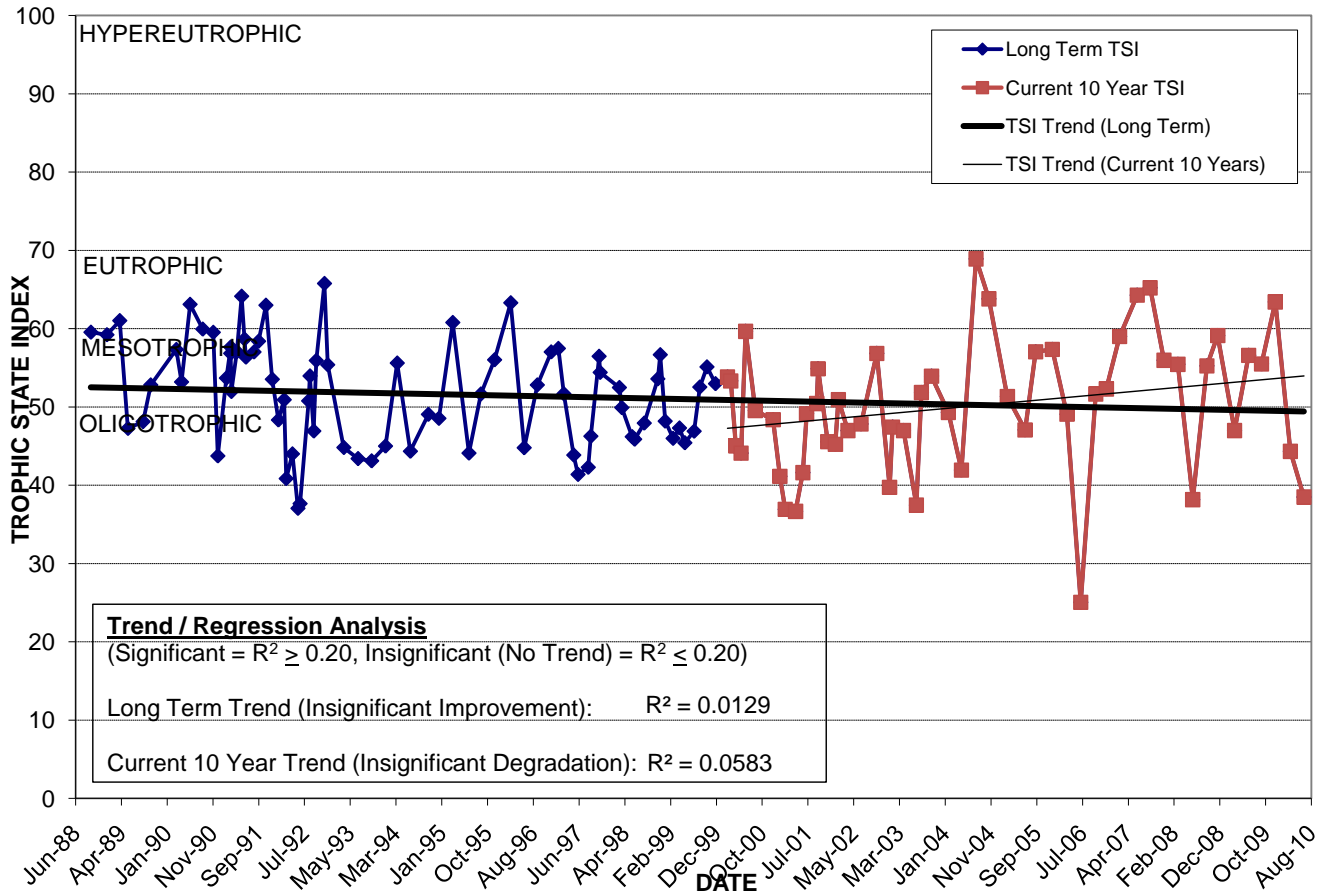
LAKE PINELOCH

Location: Lat **N 28° 30' 29.2"** Long **W 81° 22' 05.5"**
 Section **12** Township **23S** Range **29E**
 Lake Surface Area: **63 acres**
 Lake Volume: **40,924,300 ft³**
 Shoreline Length: **7,174 ft (2187 m)**
 Mean Depth: **15.0 ft (4.6 m)**
 Maximum Depth: **37.0 ft (11.3 m)**

Water Management District: **St. Johns River**
 Drainage Code: **KR-BC-17**
 Drainage Basin Area: **566 acres**
 Land Use: **57% Res, 17% Com, 4% Vac**
 Drain Wells: **2** Aeration: **No**
 Lake Origin: **Natural**
 Grass Carp (*Ctenopharyngodon idella*): **No**

2009 Water Quality Data		TSI Ranking: 58 (out of 95 lakes)			
	Total Phosphorus (mg/l)	Total Nitrogen (mg/l)	Secchi Depth (m)	Chlorophyll-a (mg/m ³)	Trophic State Index
Minimum	0.022	0.73	0.8	6.0	47
Maximum	0.037	1.25	1.6	21.5	63
Average	0.030	1.06	1.0	11.3	56

Long-Term Trophic State Index Values and Linear Regression Trend Line



Location: South of Michigan Ave. and east of Osceola Ave. between Pineloch Ave. and Topaz Wy.