

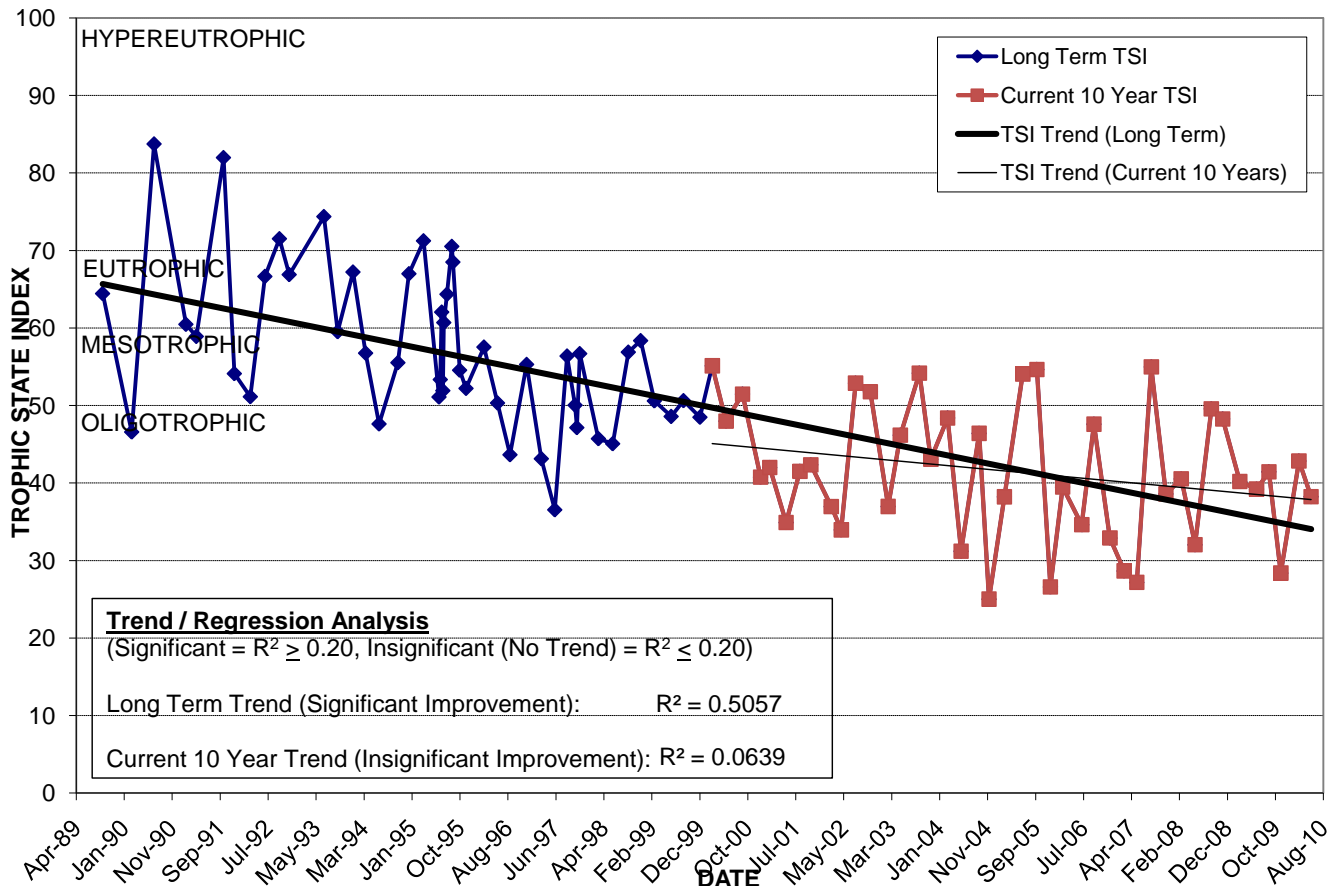
# LAKE RABAMA

Location: Lat **N 28° 31' 13.8"** Long **W 81° 19' 45.1"**  
 Section **5** Township **23S** Range **30E**  
 Lake Surface Area: **6 acres**  
 Lake Volume: **1,036,800 ft<sup>3</sup>**  
 Shoreline Length: **2,051 ft (625 m)**  
 Mean Depth: **4.2 ft (1.3 m)**  
 Maximum Depth:

Water Management District: **St. Johns River**  
 Drainage Code: **SJ-LE-38**  
 Drainage Basin Area: **186 acres**  
 Land Use: **68% Res, 15% Com**  
 Drain Wells: **1** Aeration: **No**  
 Lake Origin: **Excavation**  
 Grass Carp (*Ctenopharyngodon idella*): **Yes**

2009 Water Quality Data		TSI Ranking: 15 (out of 95 lakes)			
	Total Phosphorus (mg/l)	Total Nitrogen (mg/l)	Secchi Depth (m)	Chlorophyll-a (mg/m3)	Trophic State Index
Minimum	0.038	0.81	2.0	0.9	28
Maximum	0.057	1.05	4.5	4.1	41
Average	0.048	0.98	2.8	2.3	37

**Long-Term Trophic State Index Values and Linear Regression Trend Line**



**Location:** Just east of Conway Rd. and south of Curry Ford Rd.