

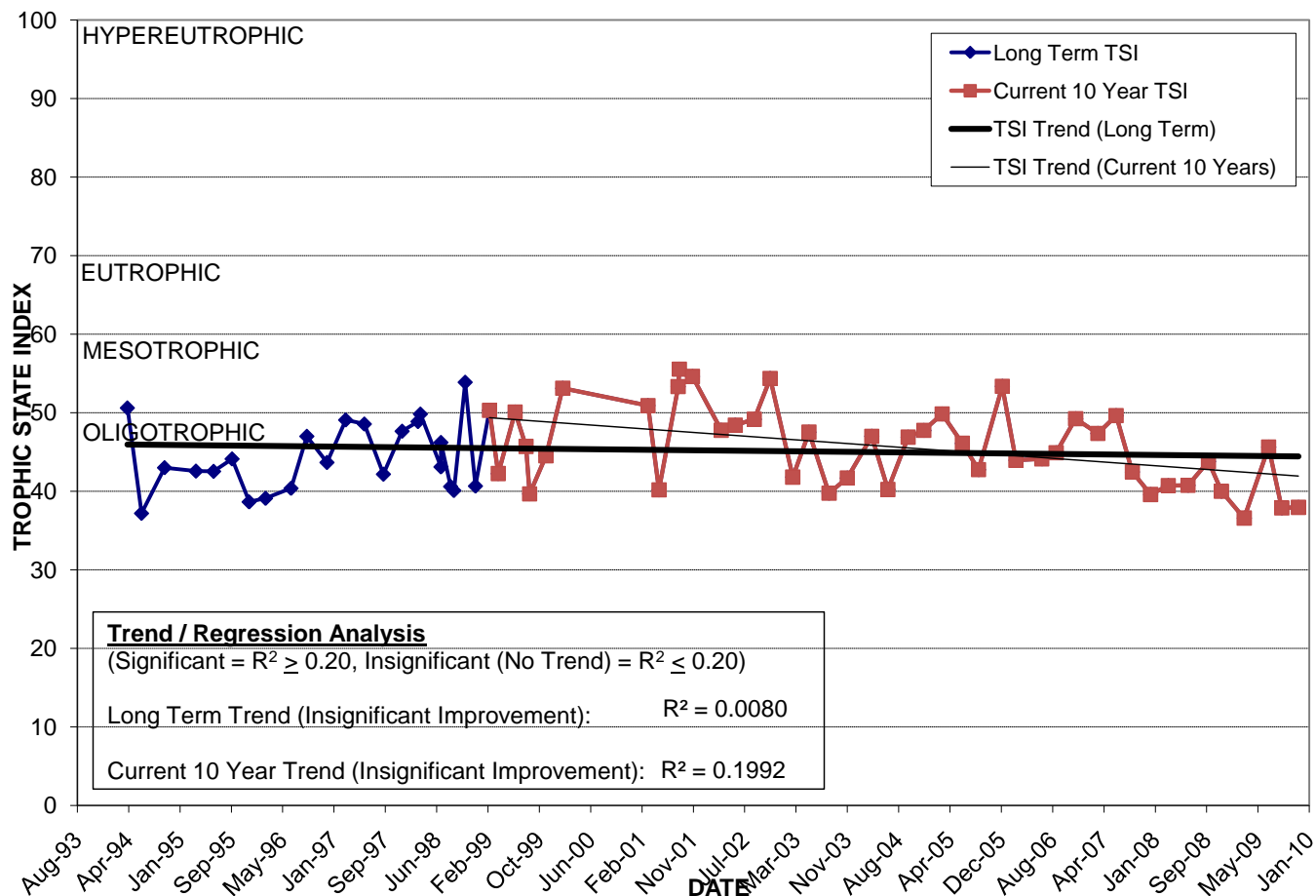
RED LAKE

Location: Lat **N 28° 24' 21.2"** Long **W 81° 15' 31.3"**
 Section **18** Township **24S** Range **31E**
 Lake Surface Area: **123 acres**
 Lake Volume: **61,287,400 ft³**
 Shoreline Length: **10,071 ft (3,070 m)**
 Mean Depth: **11.5 ft (3.5 m)**
 Maximum Depth: **20.4 ft (6.2 m)**

Water Management District: **South Florida**
 Drainage Code: **No Data**
 Drainage Basin Area: **700 acres**
 Land Use: **Some Res, Mostly Vac**
 Drain Wells: **No** Aeration: **No**
 Lake Origin: **Natural**
 Grass Carp (*Ctenopharyngodon idella*): **No**

2009 Water Quality Data		TSI Ranking: 22 (out of 95 lakes)			
	Total Phosphorus (mg/l)	Total Nitrogen (mg/l)	Secchi Depth (m)	Chlorophyll-a (mg/m ³)	Trophic State Index
Minimum	0.012	0.76	1.2	1.2	37
Maximum	0.018	0.97	2.8	6.6	46
Average	0.015	0.86	1.7	3.6	39

Long-Term Trophic State Index Values and Linear Regression Trend Line



Location: Near the Orlando International Airport off Narcoossee Rd. in the Lake Nona Estates Community and connected to Lake Nona by a small canal.