

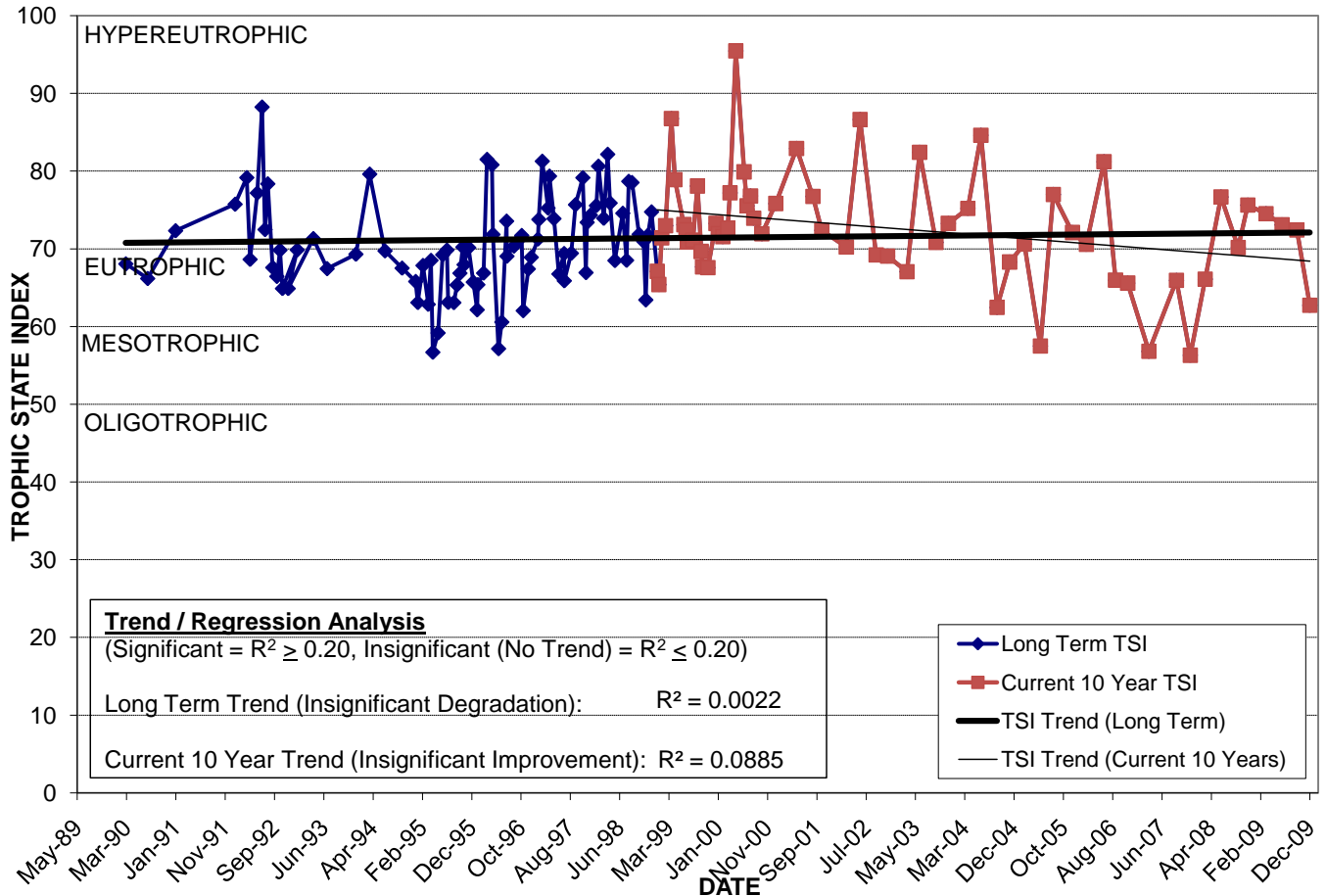
LAKE RICHMOND

Location: Lat **N 28° 30' 42.5"** Long **W 81° 26' 02.8"**
 Section **5** Township **23S** Range **29E**
 Lake Surface Area: **35 acres**
 Lake Volume: **8,088,000 ft³**
 Shoreline Length: **5,351 ft (1,631 m)**
 Mean Depth: **5.3 ft (1.6 m)**
 Maximum Depth: **13.2 ft (4.0 m)**

Water Management District: **South Florida**
 Drainage Code: **KR-SC-9**
 Drainage Basin Area: **160 acres**
 Land Use: **65% Res, 10% Com, 4% Vac**
 Drain Wells: **1** Aeration: **No**
 Lake Origin: **Excavation**
 Grass Carp (*Ctenopharyngodon idella*): **No**

2009 Water Quality Data		TSI Ranking: 93 (out of 95 lakes)			
	Total Phosphorus (mg/l)	Total Nitrogen (mg/l)	Secchi Depth (m)	Chlorophyll-a (mg/m3)	Trophic State Index
Minimum	0.047	1.46	0.4	8.7	63
Maximum	0.070	2.14	0.5	34.7	75
Average	0.060	1.93	0.5	23.4	71

Long-Term Trophic State Index Values and Linear Regression Trend Line



Location: In the Richmond Estates neighborhood south of Prince Hall Blvd. between Grandola Dr. and Lake Richmond Dr. in Prince Hall Park.