

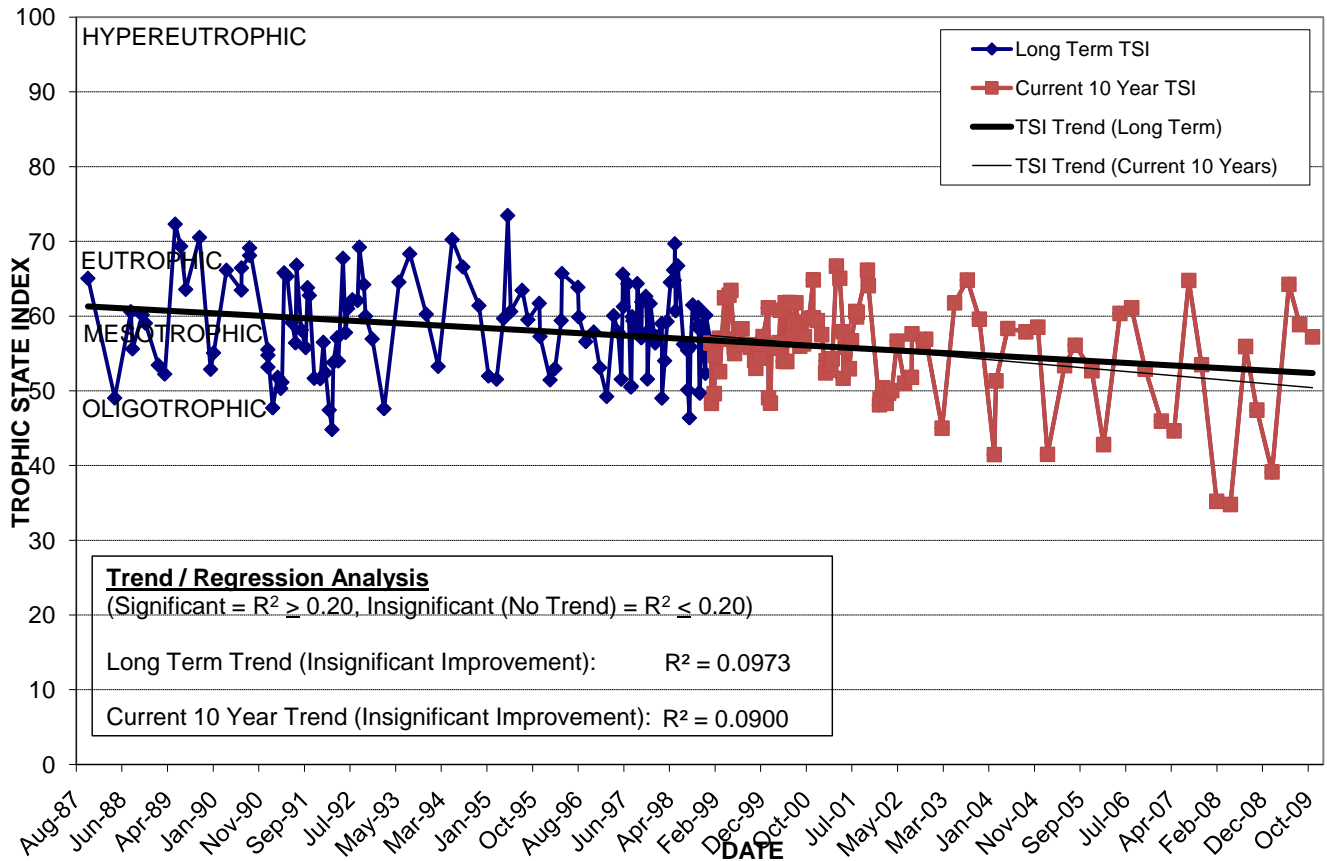
LAKE ROWENA

Location: Lat **N 28° 34' 17.4"** Long **W 81° 21' 27.0"**
 Section **18** Township **22S** Range **30E**
 Lake Surface Area: **58 acres**
 Lake Volume: **29,858,000 ft³**
 Shoreline Length: **8,679 ft (2,645 m)**
 Mean Depth: **11.8 ft (3.6 m)**
 Maximum Depth: **34.1 ft (10.4m)**

Water Management District: **St. Johns River**
 Drainage Code: **SJ-HB-21**
 Drainage Basin Area: **867 acres**
 Land Use: **44% Res, 21% Com, 10% Vac**
 Drain Wells: **No** Aeration: **Yes** (installed 4/89)
 Lake Origin: **Natural**
 Grass Carp (*Ctenopharyngodon idella*): **Yes**

2009 Water Quality Data		TSI Ranking: 56 (out of 95 lakes)			
	Total Phosphorus (mg/l)	Total Nitrogen (mg/l)	Secchi Depth (m)	Chlorophyll-a (mg/m ³)	Trophic State Index
Minimum	0.015	0.64	0.7	4.5	39
Maximum	0.040	1.11	2.0	22.0	64
Average	0.030	0.89	1.2	16.3	55

Long-Term Trophic State Index Values and Linear Regression Trend Line



Location: Just east of Loch Haven Park (Mills Ave./US 17-92).