

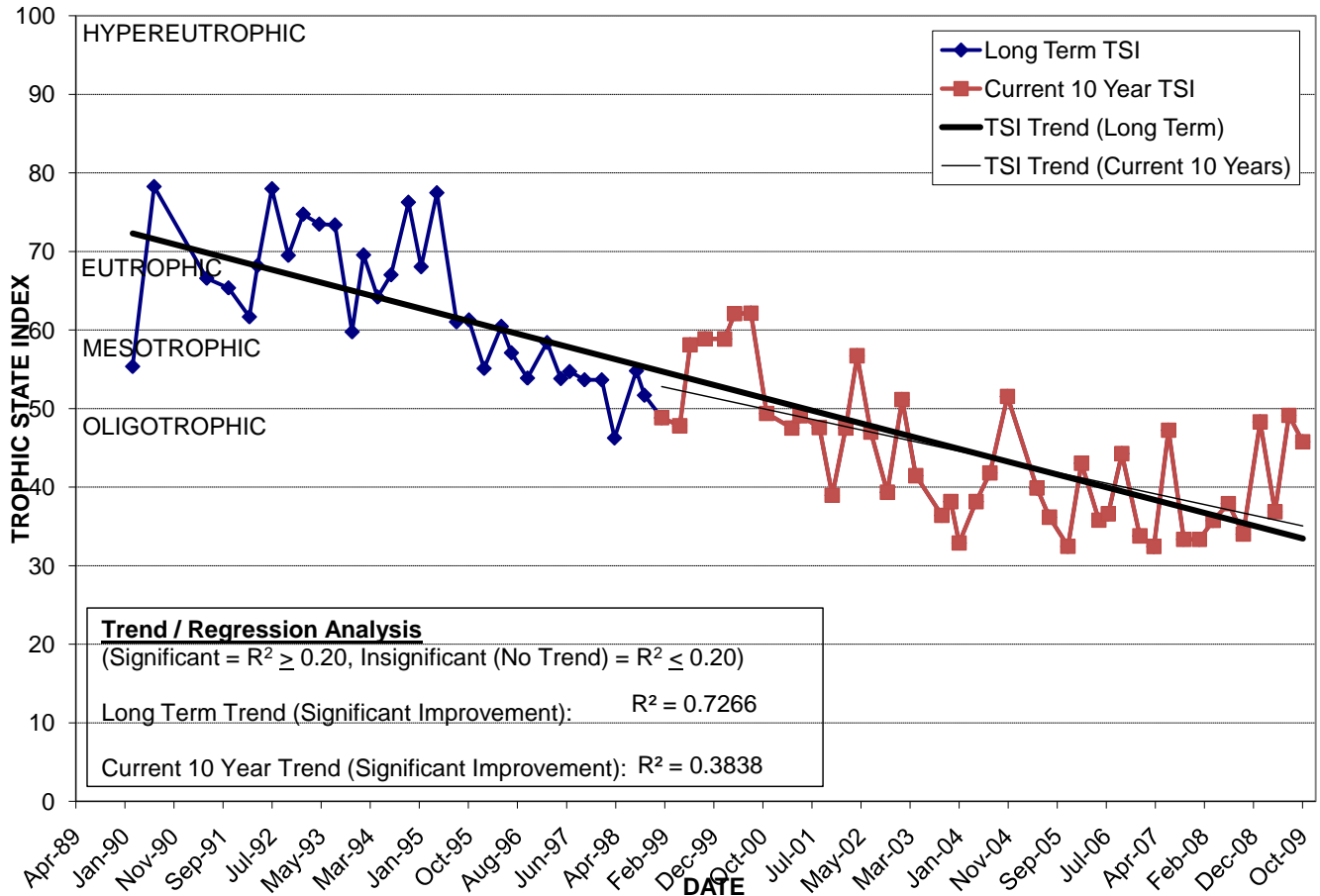
LAKE SANDY

Location: Lat **N 28° 27' 30.6"** Long **W 81° 27' 59.4"**
 Section **25** Township **22S** Range **28E**
 Lake Surface Area: **24 acres**
 Lake Volume: **8,870,800 ft³**
 Shoreline Length: **4,041 ft (1,232 m)**
 Mean Depth: **8.4 ft (2.6 m)**
 Maximum Depth: **17.4 ft (5.3 m)**

Water Management District: **South Florida**
 Drainage Code: **KR-SC-3**
 Drainage Basin Area: **174 acres**
 Land Use: **80% Com, 44% Vac**
 Drain Wells: **1** Aeration: **No**
 Lake Origin: **Natural**
 Grass Carp (*Ctenopharyngodon idella*): **Yes**

2009 Water Quality Data		TSI Ranking: 30 (out of 95 lakes)			
	Total Phosphorus (mg/l)	Total Nitrogen (mg/l)	Secchi Depth (m)	Chlorophyll-a (mg/m3)	Trophic State Index
Minimum	0.050	0.92	1.3	1.1	37
Maximum	0.153	1.45	2.1	7.8	49
Average	0.115	1.21	1.7	3.2	45

Long-Term Trophic State Index Values and Linear Regression Trend Line



Location: Just west of Universal Blvd. between International Dr. and Carrier Dr.