

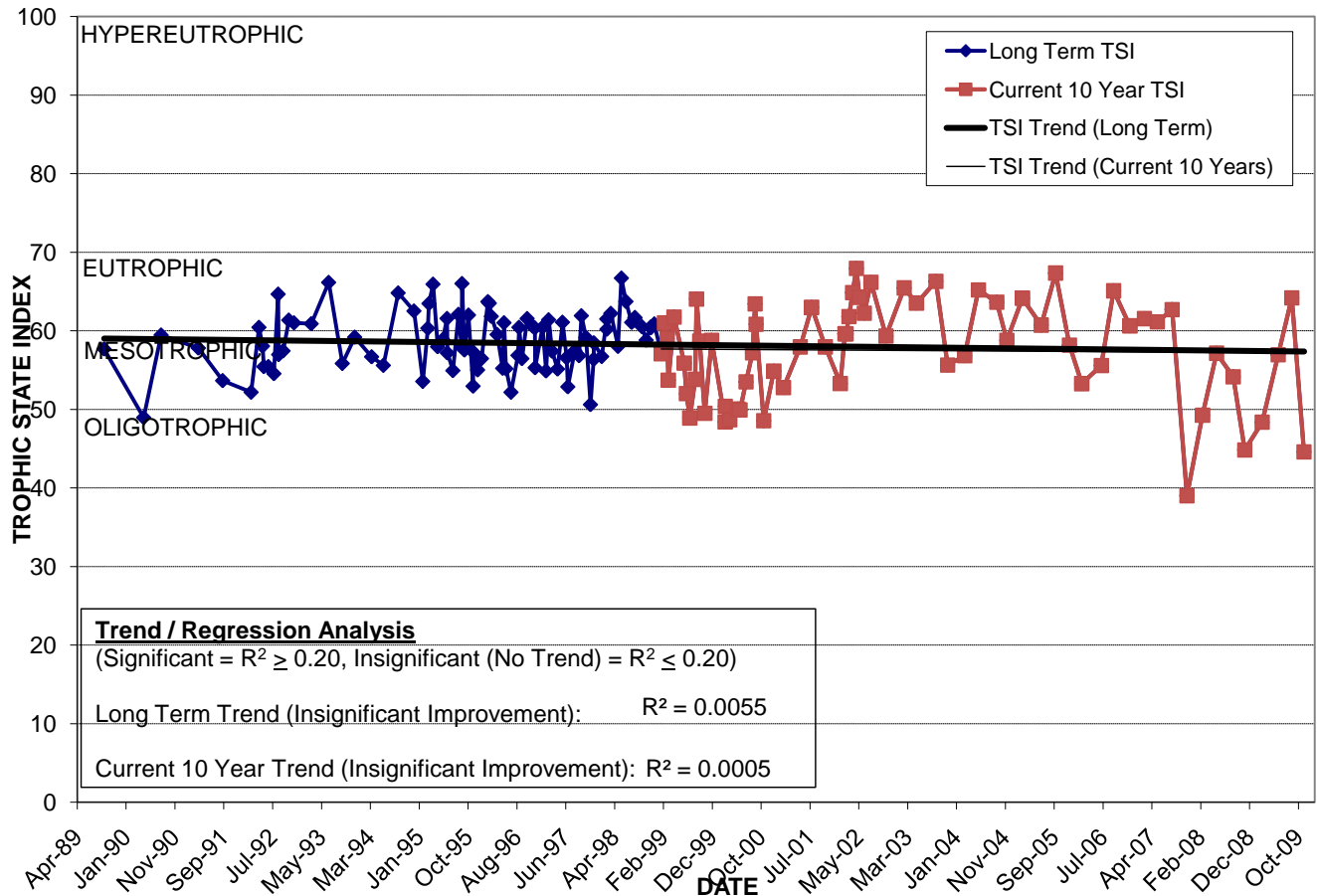
# LAKE SANTIAGO

Location: Lat **N 28° 31' 59.5"** Long **W 81° 19' 05.2"**  
 Section **2** Township **25S** Range **29E**  
 Lake Surface Area: **5 acres**  
 Lake Volume: **880,000 ft<sup>3</sup>**  
 Shoreline Length: **2,665 ft (812 m)**  
 Mean Depth: **4.5 ft (1.4 m)**  
 Maximum Depth:

Water Management District: **St. Johns River**  
 Drainage Code: **SJ-LE-35**  
 Drainage Basin Area: **94 acres**  
 Land Use: **57% Res, 12% Com, 9% Vac**  
 Drain Wells: **1** Aeration: **Yes** (installed 4/92)  
 Lake Origin: **Excavation**  
 Grass Carp (*Ctenopharyngodon idella*): **No**

2009 Water Quality Data		TSI Ranking: 51 (out of 95 lakes)			
	Total Phosphorus (mg/l)	Total Nitrogen (mg/l)	Secchi Depth (m)	Chlorophyll-a (mg/m3)	Trophic State Index
Minimum	0.029	0.74	0.9	5.4	45
Maximum	0.060	1.12	1.7	40.3	64
Average	0.042	0.95	1.2	17.9	54

**Long-Term Trophic State Index Values and Linear Regression Trend Line**



**Location:** At the north end of Teatro Ct. in Demetree Park in the Monterey neighborhood.