

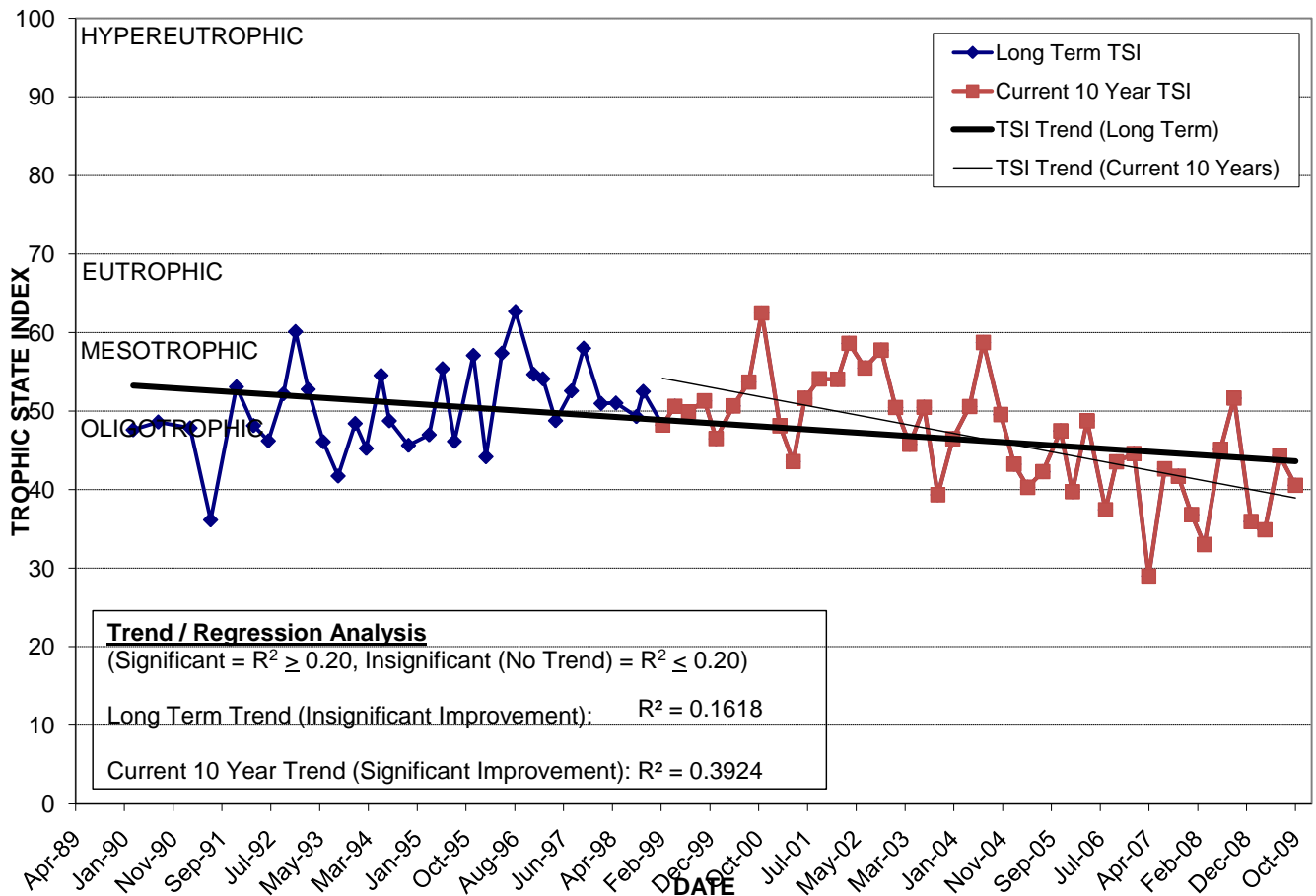
LAKE SARAH

Location: Lat **N 28° 35' 05.0"** Long **W 81° 24' 07.5"**
 Section **10** Township **22S** Range **29E**
 Lake Surface Area: **13 acres**
 Lake Volume: **4,181,000 ft³**
 Shoreline Length: **2,812 ft (857 m)**
 Mean Depth: **7.6 ft (2.3 m)**
 Maximum Depth: **17.3 ft (5.3 m)**

Water Management District: **St. Johns River**
 Drainage Code: **SJ-LW-8**
 Drainage Basin Area: **30 acres**
 Land Use: **72% Res, 2% Vac**
 Drain Wells: **No** Aeration: **No**
 Lake Origin: **Natural**
 Grass Carp (*Ctenopharyngodon idella*): **Yes**

2009 Water Quality Data		TSI Ranking: 18 (out of 95 lakes)			
	Total Phosphorus (mg/l)	Total Nitrogen (mg/l)	Secchi Depth (m)	Chlorophyll-a (mg/m ³)	Trophic State Index
Minimum	0.016	0.75	2.0	1.9	35
Maximum	0.020	0.96	2.9	9.4	44
Average	0.018	0.83	2.3	4.8	39

Long-Term Trophic State Index Values and Linear Regression Trend Line



Location: In the Palomar neighborhood between Interlaken Rd. and Lake Sarah Dr.