

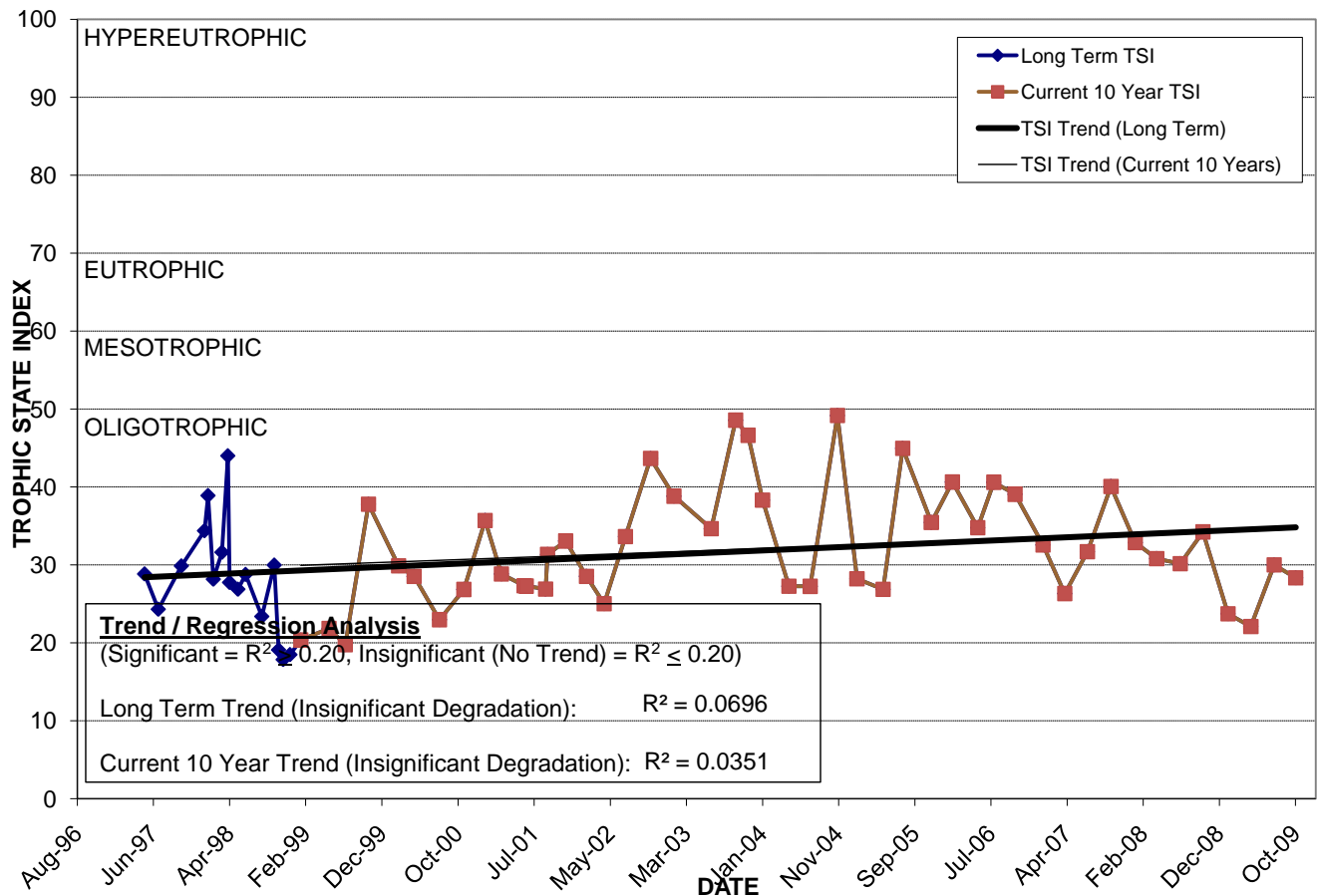
# SPRING LAKE SOUTHWEST

Location: Lat **N 28° 27' 18.4"** Long **W 81° 28' 59.9"**  
 Section **26** Township **23S** Range **28E**  
 Lake Surface Area: **112 acres**  
 Lake Volume: **88,735,000 ft<sup>3</sup>**  
 Shoreline Length: **8,700 ft (2,652 m)**  
 Mean Depth: **18.2 ft (5.5 m)**  
 Maximum Depth: **32.8 ft (10.0 m)**

Water Management District: **South Florida**  
 Drainage Code: **SF-SC**  
 Drainage Basin Area: **No Data**  
 Land Use: **Res, Com**  
 Drain Wells: **No** Aeration: **No**  
 Lake Origin: **Natural**  
 Grass Carp (*Ctenopharyngodon idella*): **No**

2009 Water Quality Data		TSI Ranking: 2 (out of 95 lakes)			
	Total Phosphorus (mg/l)	Total Nitrogen (mg/l)	Secchi Depth (m)	Chlorophyll-a (mg/m3)	Trophic State Index
Minimum	0.008	0.60	2.8	1.2	22
Maximum	0.010	0.66	3.9	3.4	30
Average	0.009	0.63	3.4	2.2	26

**Long-Term Trophic State Index Values and Linear Regression Trend Line**



**Location:** North of Sand Lake Rd. between Dr. Phillips Blvd. and Turkey Lake Rd.