

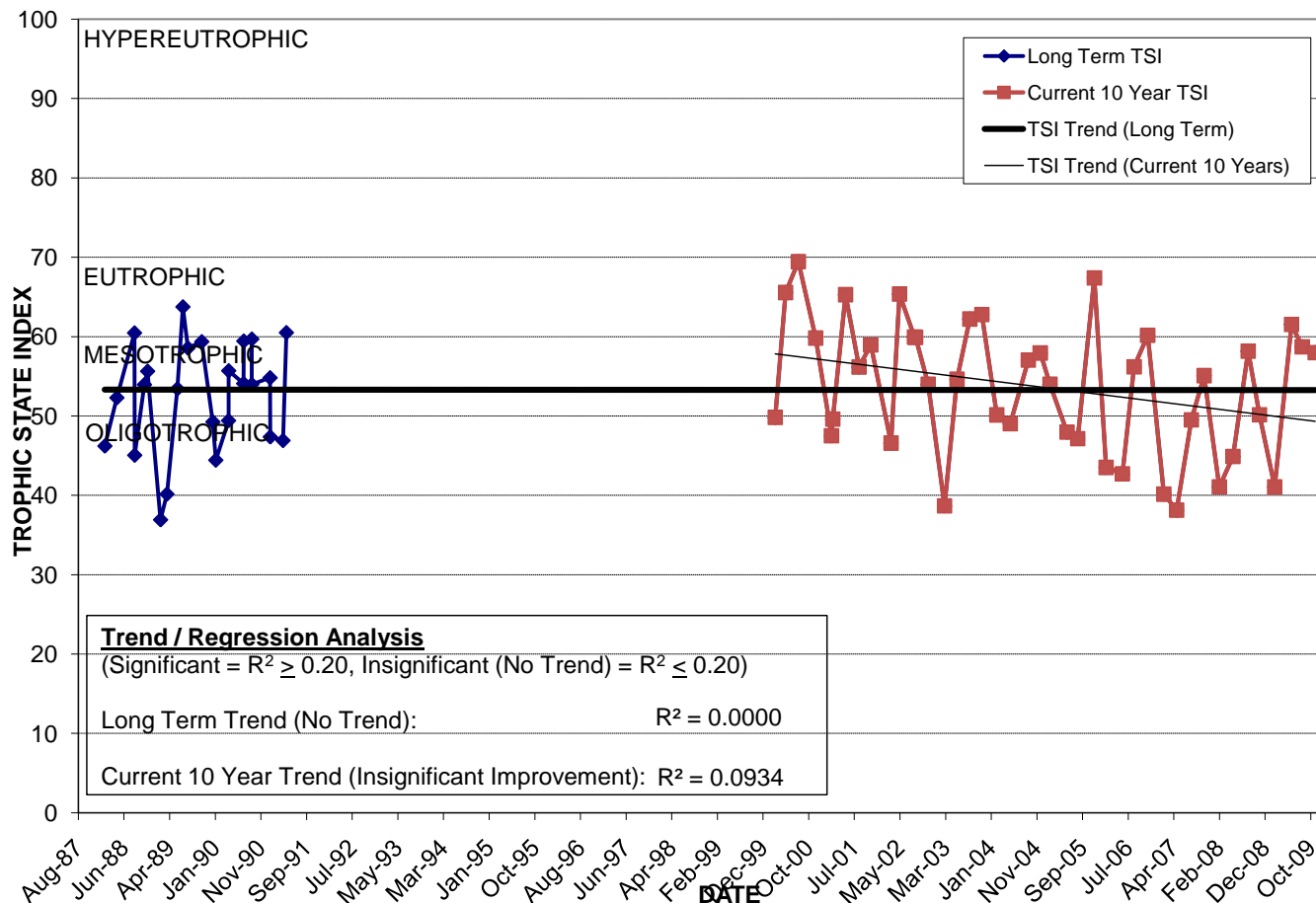
LAKE SUE

Location: Lat **N 28° 34' 39.0"** Long **W 81° 21' 15.5"**
 Section **18** Township **22N** Range **30W**
 Lake Surface Area: **143 acres**
 Lake Volume: **No Data**
 Shoreline Length: **11,492 ft (3,503 m)**
 Mean Depth: **No Data**
 Maximum Depth:

Water Management District: **St. Johns River**
 Drainage Code: **SJ-HB-20**
 Drainage Basin Area: **427 acres**
 Land Use: **59% Res, 2% Com, 12% Vac**
 Drain Wells: **No Data** Aeration: **No**
 Lake Origin: **Natural**
 Grass Carp (*Ctenopharyngodon idella*): **Yes**

2009 Water Quality Data		TSI Ranking: 55 (out of 95 lakes)			
	Total Phosphorus (mg/l)	Total Nitrogen (mg/l)	Secchi Depth (m)	Chlorophyll-a (mg/m3)	Trophic State Index
Minimum	0.016	0.68	0.6	5.4	41
Maximum	0.027	1.14	1.9	26.4	62
Average	0.023	0.94	1.1	16.2	55

Long-Term Trophic State Index Values and Linear Regression Trend Line



Location: Between Lake Shore Dr. and Fawsett Rd. near Loch Haven Park and Harry P. Leu Gardens.