

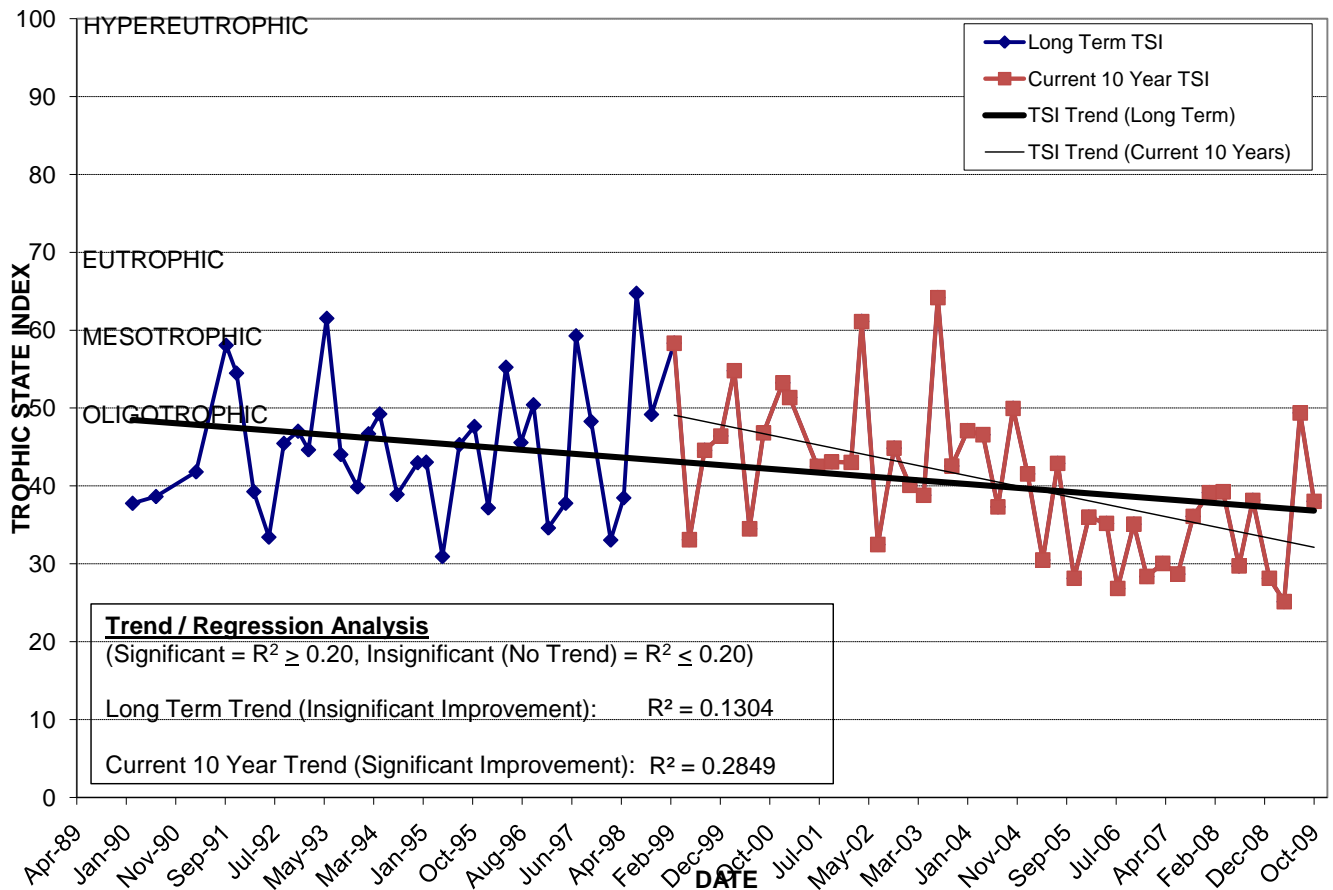
LAKE SUNSET

Location: Lat **N 28° 32' 11.0"** Long **W 81° 24' 41.0"**
 Section **33** Township **22S** Range **29E**
 Lake Surface Area: **29 acres**
 Lake Volume: **24,000,000 ft³**
 Shoreline Length: **4,543 ft (1,385 m)**
 Mean Depth: **19.2 ft (5.9 m)**
 Maximum Depth:

Water Management District: **South Florida**
 Drainage Code: **KR-SC-17**
 Drainage Basin Area: **149 acres**
 Land Use: **44% Res, 6% Com, 13% Vac**
 Drain Wells: **1** Aeration: **No**
 Lake Origin: **Natural**
 Grass Carp (*Ctenopharyngodon idella*): **Yes**

2009 Water Quality Data		TSI Ranking: 10 (out of 95 lakes)			
	Total Phosphorus (mg/l)	Total Nitrogen (mg/l)	Secchi Depth (m)	Chlorophyll-a (mg/m3)	Trophic State Index
Minimum	0.018	0.66	1.0	1.4	25
Maximum	0.025	0.88	5.3	3.6	49
Average	0.020	0.76	3.3	2.5	35

Long-Term Trophic State Index Values and Linear Regression Trend Line



Location: East of John Young Pkwy. between Church St. and Orange Center Blvd.