

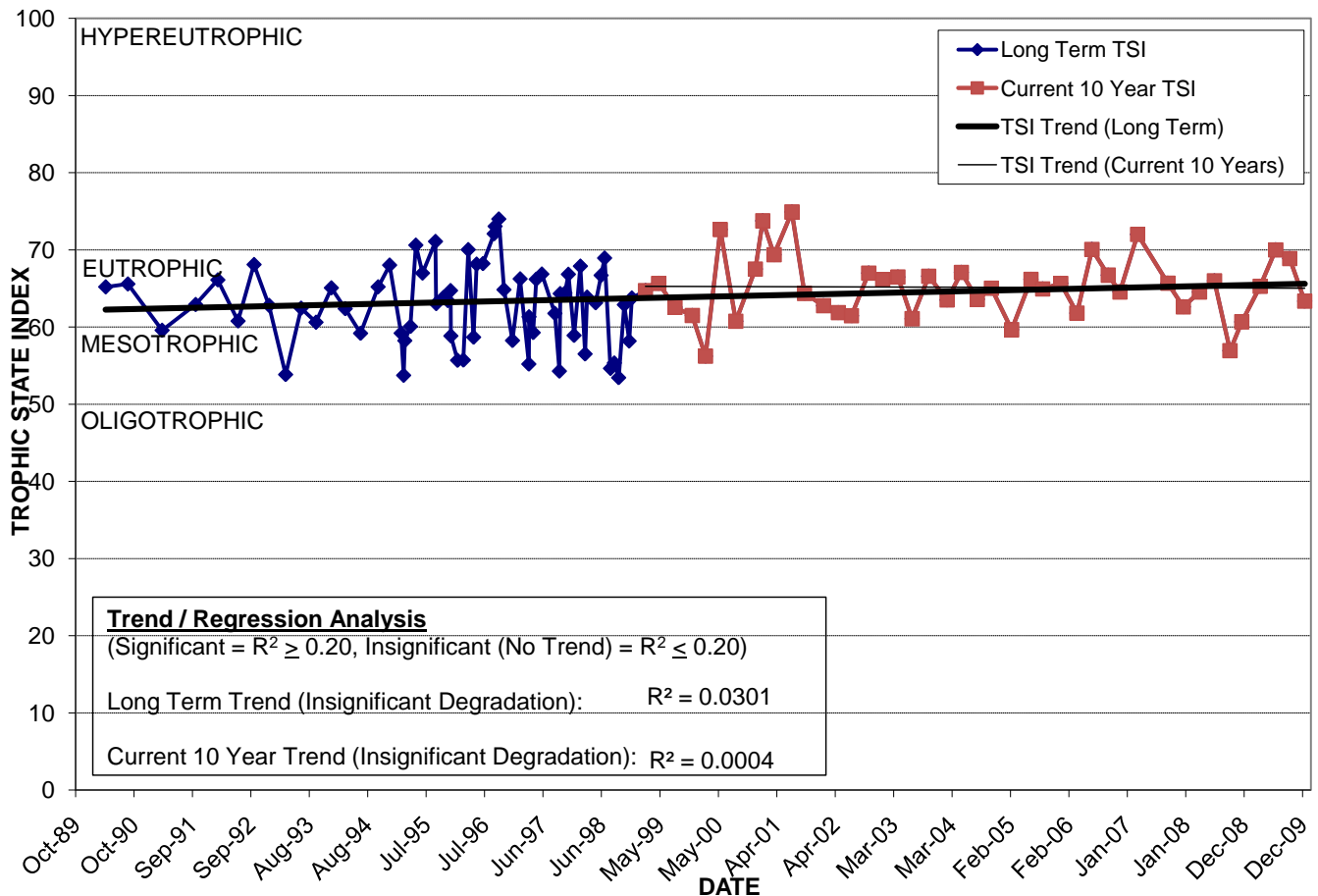
# LAKE WADE

Location: Lat **N 28° 30' 58.3"** Long **W 81° 22' 03.7"**  
 Section **1** Township **23S** Range **29E**  
 Lake Surface Area: **3 acres**  
 Lake Volume: **720,000 ft<sup>3</sup>**  
 Shoreline Length: **1,322 ft (403 m)**  
 Mean Depth: **5.9 ft (1.8 m)**  
 Maximum Depth:

Water Management District: **St. Johns River**  
 Drainage Code: **SJ-LE-19**  
 Drainage Basin Area: **192 acres**  
 Land Use: **47% Res, 36% Com, 7% Vac**  
 Drain Wells: **1** Aeration: **No**  
 Lake Origin: **Natural**  
 Grass Carp (*Ctenopharyngodon idella*): **Yes**

2009 Water Quality Data		TSI Ranking: 90 (out of 95 lakes)			
	Total Phosphorus (mg/l)	Total Nitrogen (mg/l)	Secchi Depth (m)	Chlorophyll-a (mg/m <sup>3</sup> )	Trophic State Index
Minimum	0.072	0.95	0.6	23.7	63
Maximum	0.111	1.41	0.8	56.9	70
Average	0.099	1.22	0.7	35.9	67

**Long-Term Trophic State Index Values and Linear Regression Trend Line**



**Location:** East of Summerlin Ave. between Grant St. and Crystal Lake Dr.