

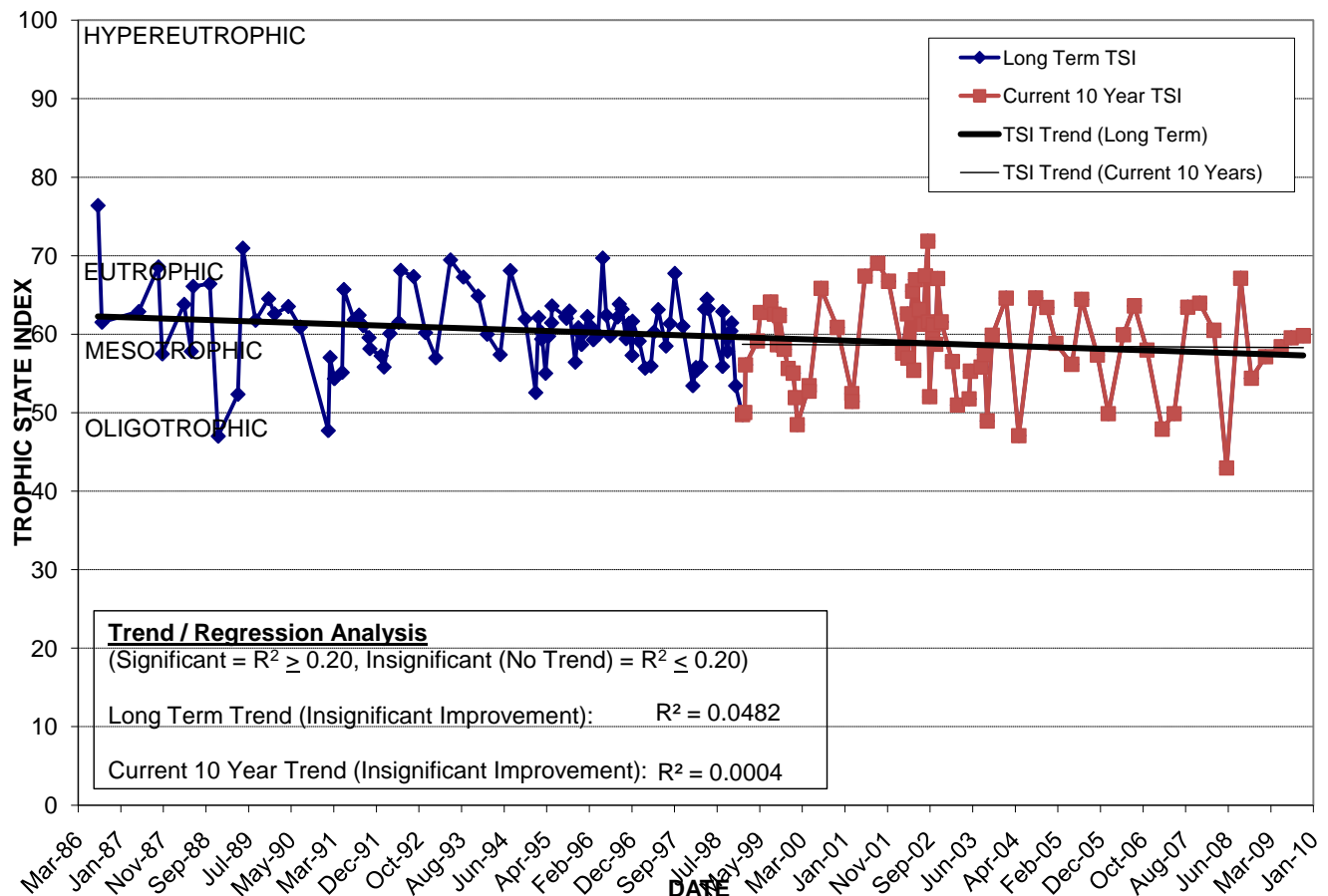
# LAKE WINYAH

Location: Lat **N 28° 34' 41.9"** Long **W 81° 22' 06.2"**  
 Section **13** Township **22S** Range **29E**  
 Lake Surface Area: **18 acres**  
 Lake Volume: **7,900,000 ft<sup>3</sup>**  
 Shoreline Length: **3,282 ft (1,000 m)**  
 Mean Depth: **10.1 ft (3.0 m)**  
 Maximum Depth:

Water Management District: **St. Johns River**  
 Drainage Code: **SJ-HB-23**  
 Drainage Basin Area: **647 acres**  
 Land Use: **53% Res, 13% Com, 4% Vac**  
 Drain Wells: **No** Aeration: **Yes** (installed 10/86)  
 Lake Origin: **Natural**  
 Grass Carp (*Ctenopharyngodon idella*): **Yes**

2009 Water Quality Data		TSI Ranking: 70 (out of 95 lakes)			
	Total Phosphorus (mg/l)	Total Nitrogen (mg/l)	Secchi Depth (m)	Chlorophyll-a (mg/m <sup>3</sup> )	Trophic State Index
Minimum	0.045	0.69	1.0	17.9	57
Maximum	0.052	0.98	1.1	28.0	60
Average	0.049	0.84	1.0	24.0	59

**Long-Term Trophic State Index Values and Linear Regression Trend Line**



**Location:** West of Westchester Ave. between Wilkinson St. and Dorchester St. in the Orwin Manor neighborhood, bordered by Florida Hospital to the south and west.