

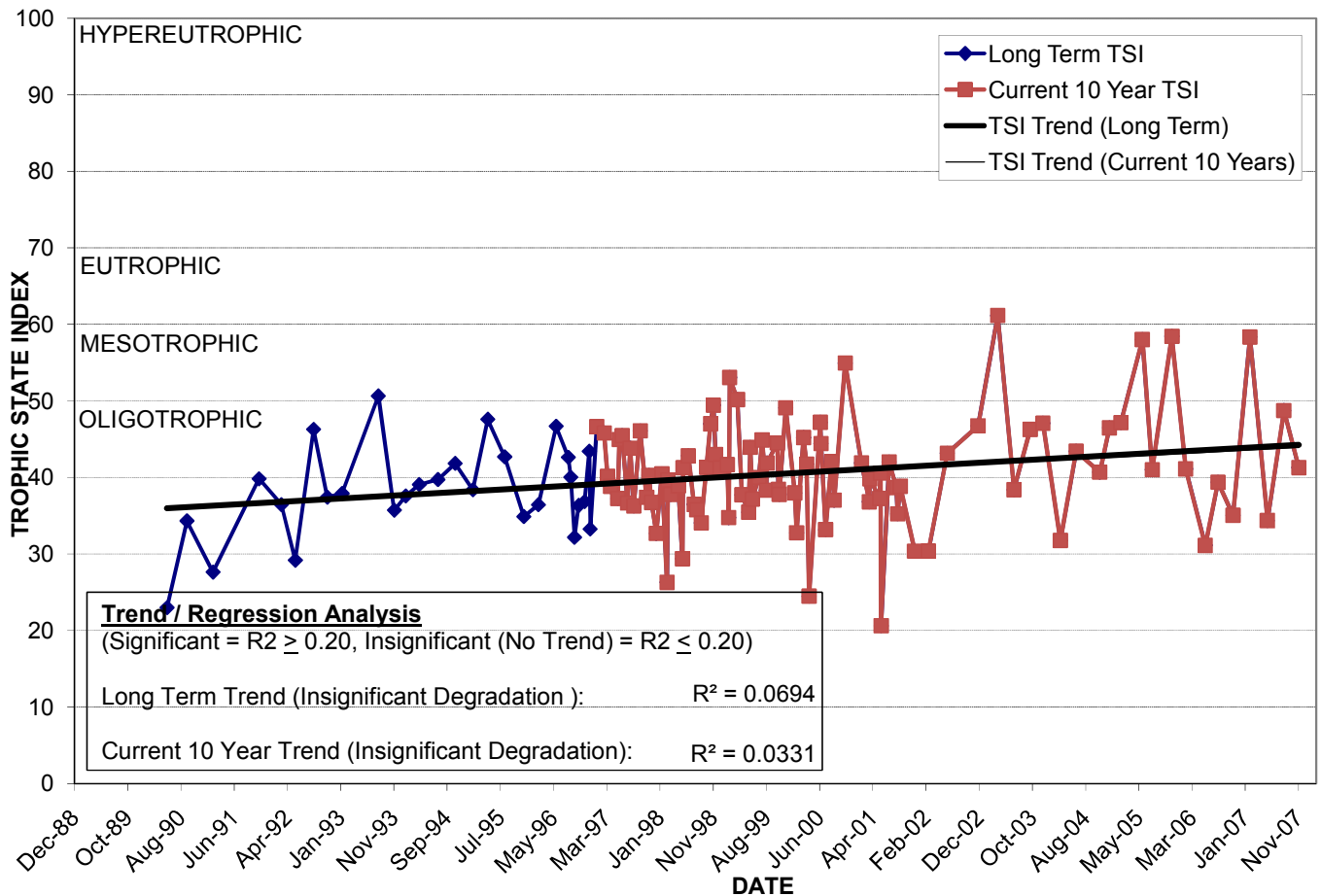
LAKE GEAR

Location: Lat **N 28° 33' 23.0"** Long **W 81° 19' 49.4"**
 Section **20** Township **22S** Range **30E**
 Lake Surface Area: **6 acres**
 Lake Volume: **5,400,000 ft³**
 Shoreline Length: **2,383 ft (726 m)**
 Mean Depth: **19.9 ft (6.1 m)**
 Maximum Depth:

Water Management District: **St. Johns River**
 Drainage Code: **SJ-LE-6**
 Drainage Basin Area: **45 acres**
 Land Use: **24% Res, 27% com, 39% Vac**
 Drain Wells: **1** Aeration: **No**
 Lake Origin: **Excavation**
 Grass Carp (*Ctenopharyngodon idella*): **No**

2007 Water Quality Data		TSI Ranking: 34 (out of 94 lakes)			
	Total Phosphorus (mg/l)	Total Nitrogen (mg/l)	Secchi Depth (m)	Chlorophyll-a (mg/m ³)	Trophic State Index
Minimum	0.020	0.44	1.7	3.5	34
Maximum	0.034	0.85	3.3	10.4	58
Average	0.026	0.67	2.5	7.7	46

Long-Term Trophic State Index Values and Linear Regression Trend Line



Comments: Adjacent to the Cady Way Trail, near Baldwin Park Neighborhood

Location: Approximately 0.2 miles east of Bennet Rd., just north of E Colonial Dr.