

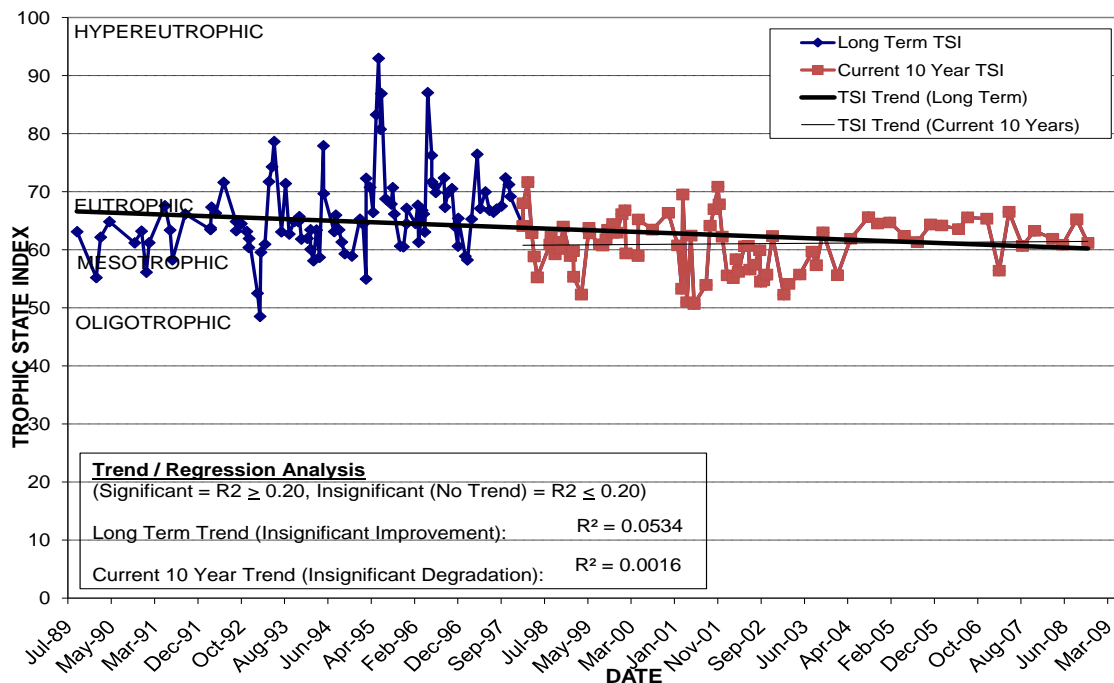
LAKE ADAIR

Location: Lat **N 28° 33' 35.6"** Long **W 81° 23' 27.4"**
 Section **23** Township **22S** Range **29E**
 Lake Surface Area: **25 acres**
 Lake Volume: **9,700,000 ft³**
 Shoreline Length: **4,575 ft (1,394 m)**
 Mean Depth: **8.9 ft (2.7 m)**
 Maximum Depth:

Water Management District: **St. Johns River**
 Drainage Code: **SJ-HB-27**
 Drainage Basin Area: **252 acres**
 Land Use: **55% Res, 7% Com, 3% Vac**
 Drain Wells: **1** Aeration: **No**
 Lake Origin: **Natural**
 Grass Carp (*Ctenopharyngodon idella*): **No**

2008 Water Quality Data		TSI Ranking: 81 (out of 95 lakes)			
	Total Phosphorus (mg/l)	Total Nitrogen (mg/l)	Secchi Depth (m)	Chlorophyll-a (mg/m3)	Trophic State Index
Minimum	0.056	0.96	0.8	18.3	61
Maximum	0.088	1.33	1.0	41.5	65
Average	0.071	1.19	0.9	28.0	63

Long-Term Trophic State Index Values and Linear Regression Trend Line



Comments: Lake Adair experienced severe algae blooms during the mid 1990's. The Stormwater Utility Division conducted a study that indicated the major nutrient source to Lake Adair originated from a large colony of migratory birds. Birds were dispersed in the spring of 1996, which has resulted in significant water quality improvements.

Location: West of Edgewater Dr. in College Park, surrounded by Lake Adair Blvd.