

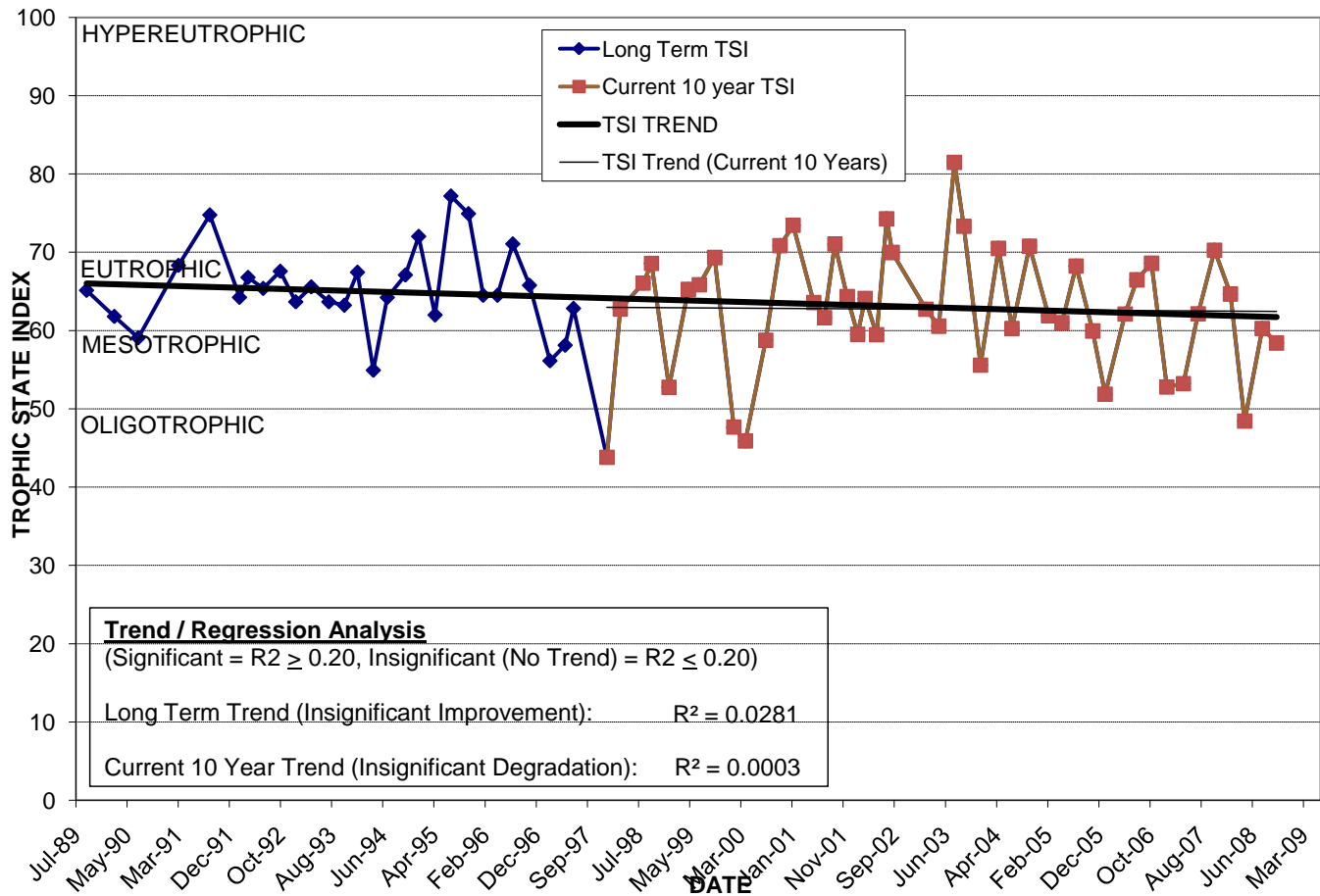
LAKE ANGEL

Location: Lat **N 28° 31' 01.9"** Long **W 81° 23' 17.5"**
 Section **2** Township **23S** Range **29E**
 Lake Surface Area: **4 acres**
 Lake Volume: **12,577,800 ft³**
 Shoreline Length: **1,905 ft (581 m)**
 Mean Depth: **7.7 ft (2.3 m)**
 Maximum Depth: **11.9 ft (3.6 m)**

Water Management District: **St. Johns River**
 Drainage Code: **KR-SC-19**
 Drainage Basin Area: **273 acres**
 Land Use: **50% Res, 27% Com, 15% Vac**
 Drain Wells: **1** Aeration: **No**
 Lake Origin: **Excavation**
 Grass Carp (*Ctenopharyngodon idella*): **Yes**

2008 Water Quality Data		TSI Ranking: 71 (out of 95 lakes)			
	Total Phosphorus (mg/l)	Total Nitrogen (mg/l)	Secchi Depth (m)	Chlorophyll-a (mg/m3)	Trophic State Index
Minimum	0.047	0.82	0.8	8.3	48
Maximum	0.114	1.45	1.6	34.2	65
Average	0.076	1.17	1.1	18.2	59

Long-Term Trophic State Index Values and Linear Regression Trend Line



Comments: Solar powered circulation system was installed in May 2001 to evaluate effects on water quality. No improvements observed.

Location: In the southern tip of Holden Heights, adjacent to I-4 (on the west side) between Kaley Ave. and Michigan St. exits.