

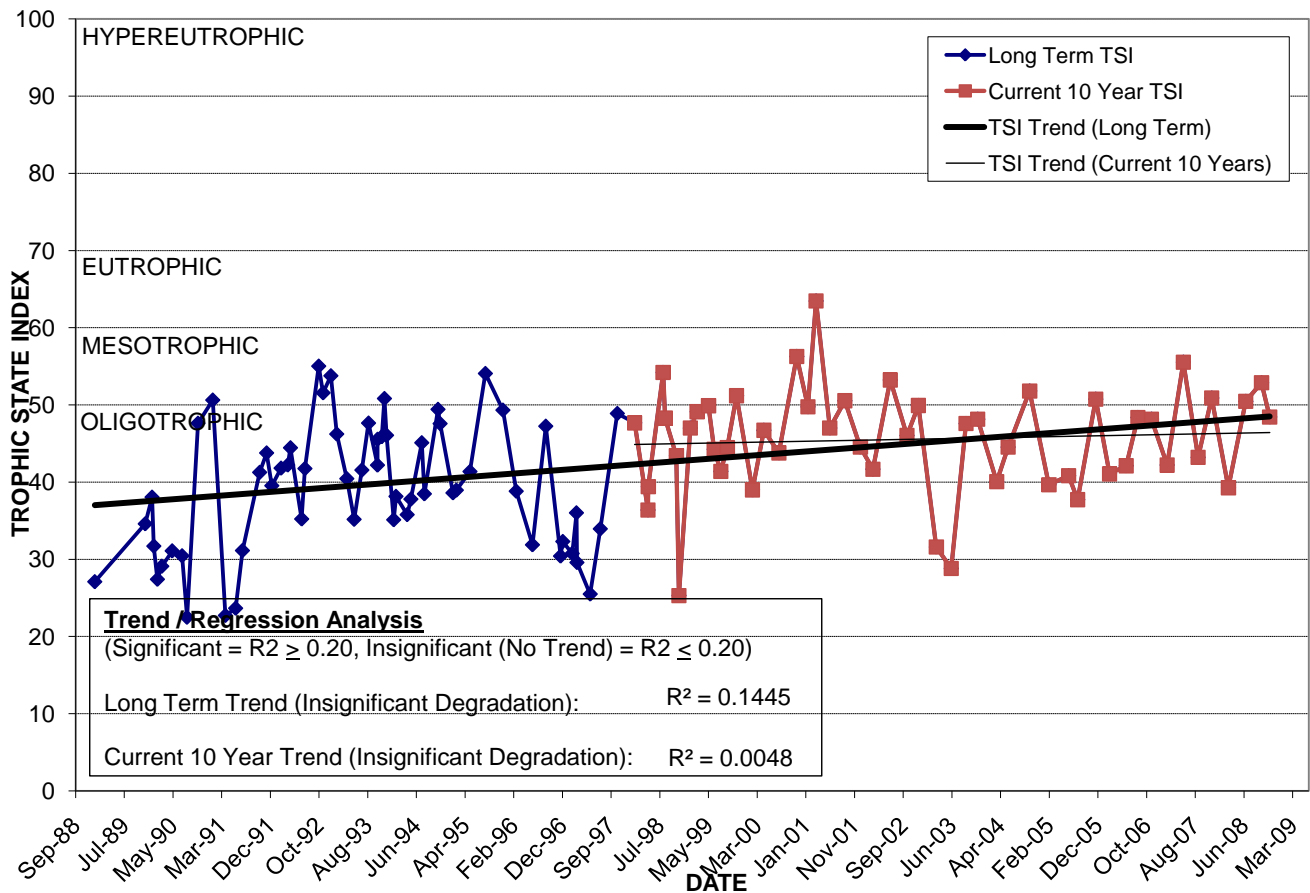
LAKE BARTON

Location: Lat N **28° 33' 02.5"** Long W **81° 18' 55.8"**
 Section **23** Township **22S** Range **30E**
 Lake Surface Area: **134 acres**
 Lake Volume: **89,161,500 ft³**
 Shoreline Length: **9,773 ft (2,979 m)**
 Mean Depth: **15.3 ft (4.7 m)**
 Maximum Depth: **34.2 ft (10.4 m)**

Water Management District: **St. Johns River**
 Drainage Code: **SJ-LE-8**
 Drainage Basin Area: **788 acres**
 Land Use: **18% Res, 16% Com, 4% Vac**
 Drain Wells: **1** Aeration: **No**
 Lake Origin: **Natural**
 Grass Carp (*Ctenopharyngodon idella*): **Yes**

2008 Water Quality Data		TSI Ranking: 46 (out of 95 lakes)			
	Total Phosphorus (mg/l)	Total Nitrogen (mg/l)	Secchi Depth (m)	Chlorophyll-a (mg/m3)	Trophic State Index
Minimum	0.014	0.64	0.9	5.0	39
Maximum	0.032	1.27	2.0	9.6	53
Average	0.019	0.95	1.2	8.0	49

Long-Term Trophic State Index Values and Linear Regression Trend Line



Comments: Connected to Lake Underhill in 1995. Outfalls to Little Econlockhatchee River. History of problems with excessive growth of hydrilla.

Location: Approximately 0.2 miles southwest of the Semoran Blvd. and Colonial Dr. intersection.