

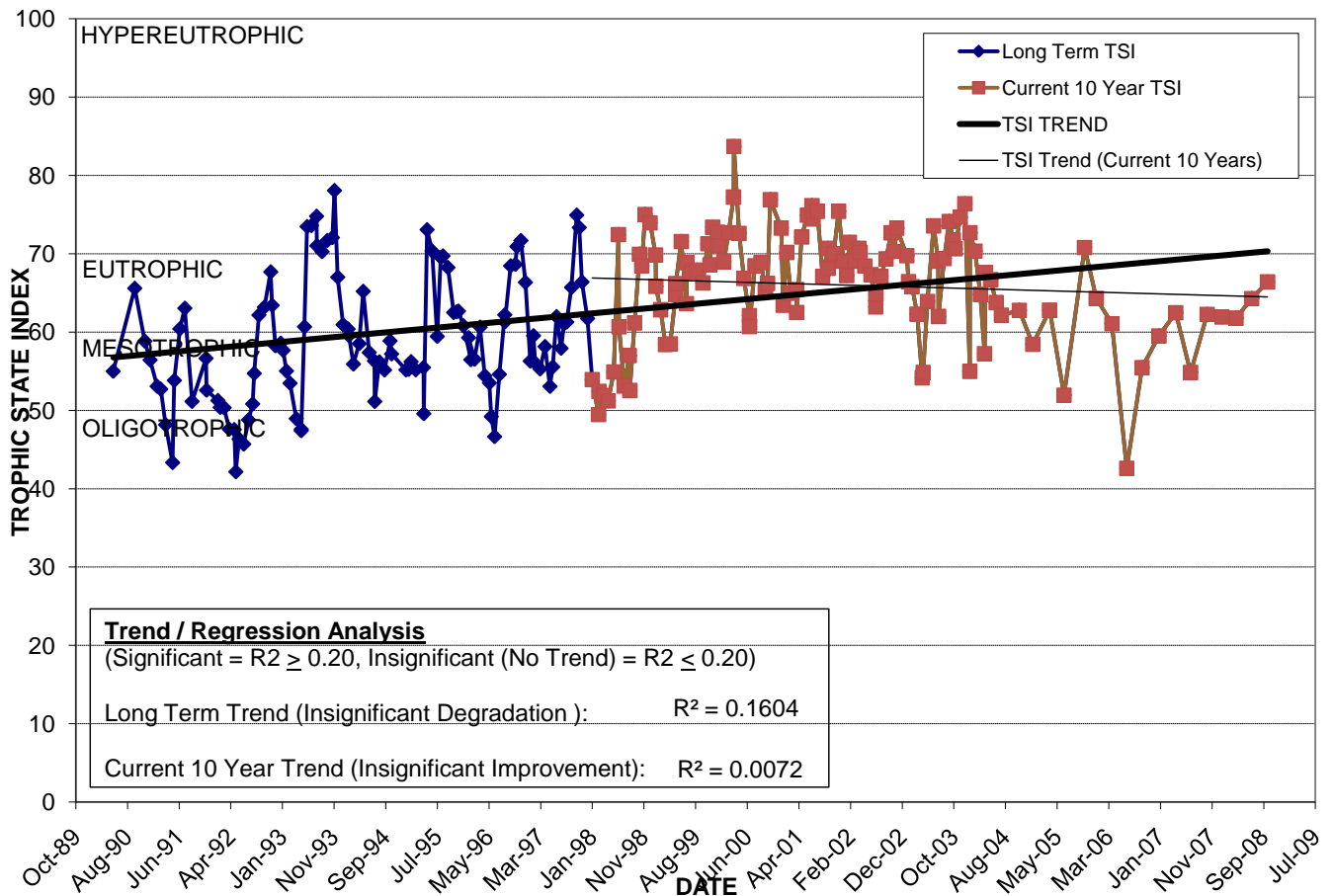
BAY LAKE

Location: Lat **N 28° 35' 28.3"** Long **W 81° 25' 18.5"**
 Section **9** Township **22S** Range **29E**
 Lake Surface Area: **34 acres**
 Lake Volume: **12,250,000 ft³**
 Shoreline Length: **4,778 ft (1,456 m)**
 Mean Depth: **8.3 ft (2.5 m)**
 Maximum Depth:

Water Management District: **St. Johns River**
 Drainage Code: **SJ-LW-3-27**
 Drainage Basin Area: **332 acres**
 Land Use: **24% Res, 37% Com, 28% Vac**
 Drain Wells: **No** Aeration: **No**
 Lake Origin: **Natural**
 Grass Carp (*Ctenopharyngodon idella*): **Yes**

2008 Water Quality Data		TSI Ranking: 84 (out of 95 lakes)			
	Total Phosphorus (mg/l)	Total Nitrogen (mg/l)	Secchi Depth (m)	Chlorophyll-a (mg/m3)	Trophic State Index
Minimum	0.026	1.91	0.5	19.2	62
Maximum	0.035	2.42	0.9	33.3	66
Average	0.029	2.25	0.7	24.5	64

Long-Term Trophic State Index Values and Linear Regression Trend Line



Comments: Declining water quality may be related to elimination of vegetation by grass carp. Lake is currently targeted by State for restoration work because of poor water quality.

Location: Adjacent to John Young Pkwy. (on the west side) approx. 0.5 mile south of Lee Rd.