

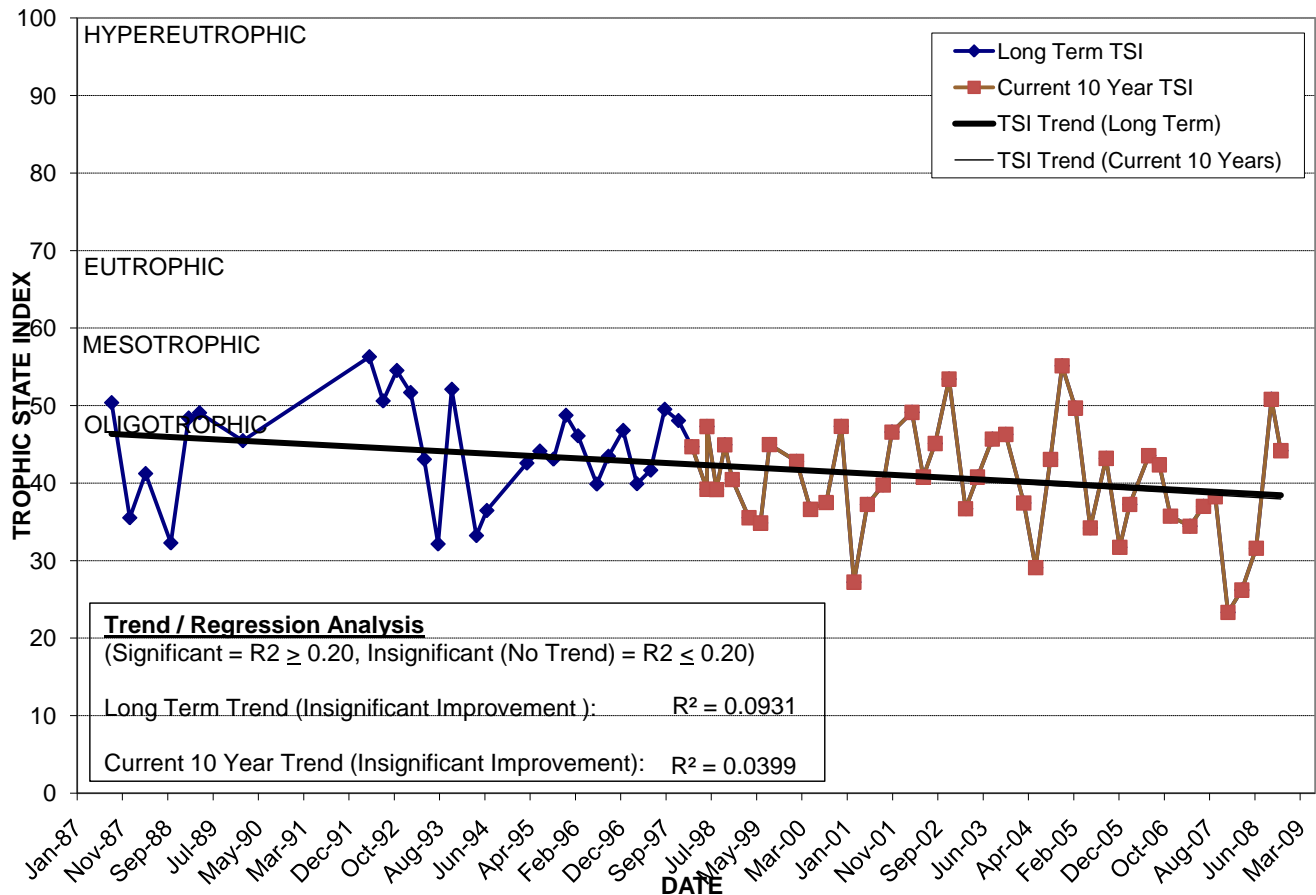
BUCK LAKE

Location: Lat **N 28° 24' 33.8"** Long **W 81° 14' 53.5"**
 Section **7 Township 24S Range 31E**
 Lake Surface Area: **129 acres**
 Lake Volume: **74,136,500 ft³**
 Shoreline Length: **10,687 ft (3,257 m)**
 Mean Depth: **13.2 ft (4.0 m)**
 Maximum Depth: **25.2 ft (7.7 m)**

Water Management District: **South Florida**
 Drainage Code: **KR-H-1**
 Drainage Basin Area: **1,190 acres**
 Land Use: **Res, Mostly Vac**
 Drain Wells: **1** Aeration: **NO**
 Lake Origin: **Natural**
 Grass Carp (*Ctenopharyngodon idella*): **NO**

2008 Water Quality Data		TSI Ranking: 21 (out of 95 lakes)			
	Total Phosphorus (mg/l)	Total Nitrogen (mg/l)	Secchi Depth (m)	Chlorophyll-a (mg/m3)	Trophic State Index
Minimum	0.010	0.80	1.2	1.2	26
Maximum	0.025	0.94	2.8	7.1	51
Average	0.017	0.88	2.0	3.7	39

Long-Term Trophic State Index Values and Linear Regression Trend Line



Comments: Pristine softwater lake annexed into the City in 1994. Data indicates water quality is being maintained despite large scale development in surrounding areas.

Location: Adjacent to Narcoossee Rd. (on the west side), approximately 0.7 miles north of the Central Florida Greenway.