

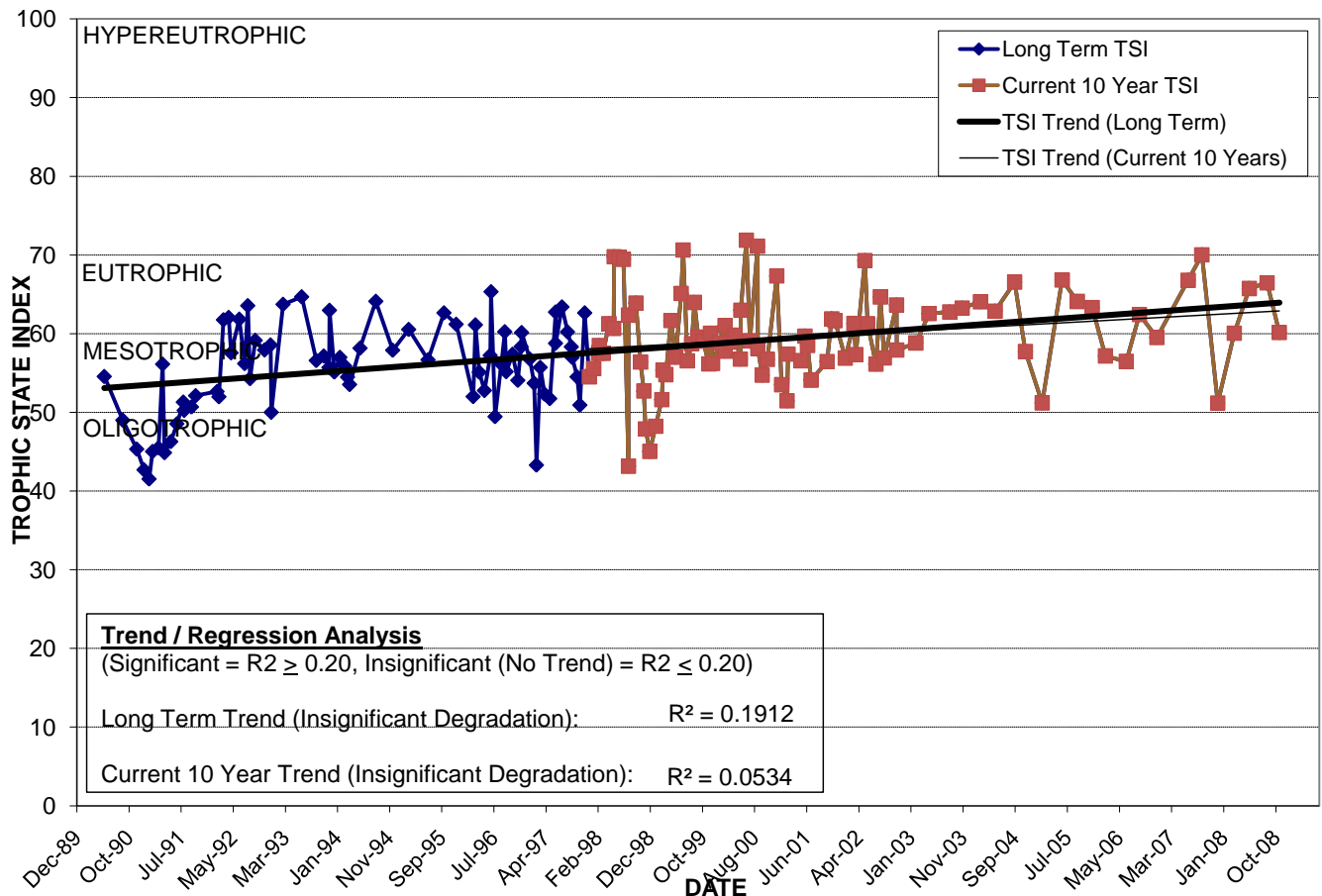
LAKE C

Location: Lat **N 28° 31' 52.0"** Long **W 81° 19' 10.9"**
 Section **33** Township **22S** Range **30E**
 Lake Surface Area: **4 acres**
 Lake Volume: **1,275,000 ft³**
 Shoreline Length: **2,551 ft (777 m)**
 Mean Depth: **7.6 ft (2.3 m)**
 Maximum Depth:

Water Management District: **St. Johns River**
 Drainage Code: **SJ-LE-35**
 Drainage Basin Area: **279 acres**
 Land Use: **57% Res, 12% Com, 9% Vac**
 Drain Wells: **No** Aeration: **No**
 Lake Origin: **Excavation**
 Grass Carp (*Ctenopharyngodon idella*): **Yes**

2008 Water Quality Data		TSI Ranking: 86 (out of 95 lakes)			
	Total Phosphorus (mg/l)	Total Nitrogen (mg/l)	Secchi Depth (m)	Chlorophyll-a (mg/m3)	Trophic State Index
Minimum	0.057	0.89	0.7	13.3	60
Maximum	0.069	1.53	1.0	67.5	66
Average	0.062	1.15	0.9	39.1	64

Long-Term Trophic State Index Values and Linear Regression Trend Line



Comments: Water quality has improved from late 1990's when a discharge of wastewater was eliminated, but has not improved to conditions present in early 1990's.

Location: Just north of Lido St. and Wendy Way intersection.