

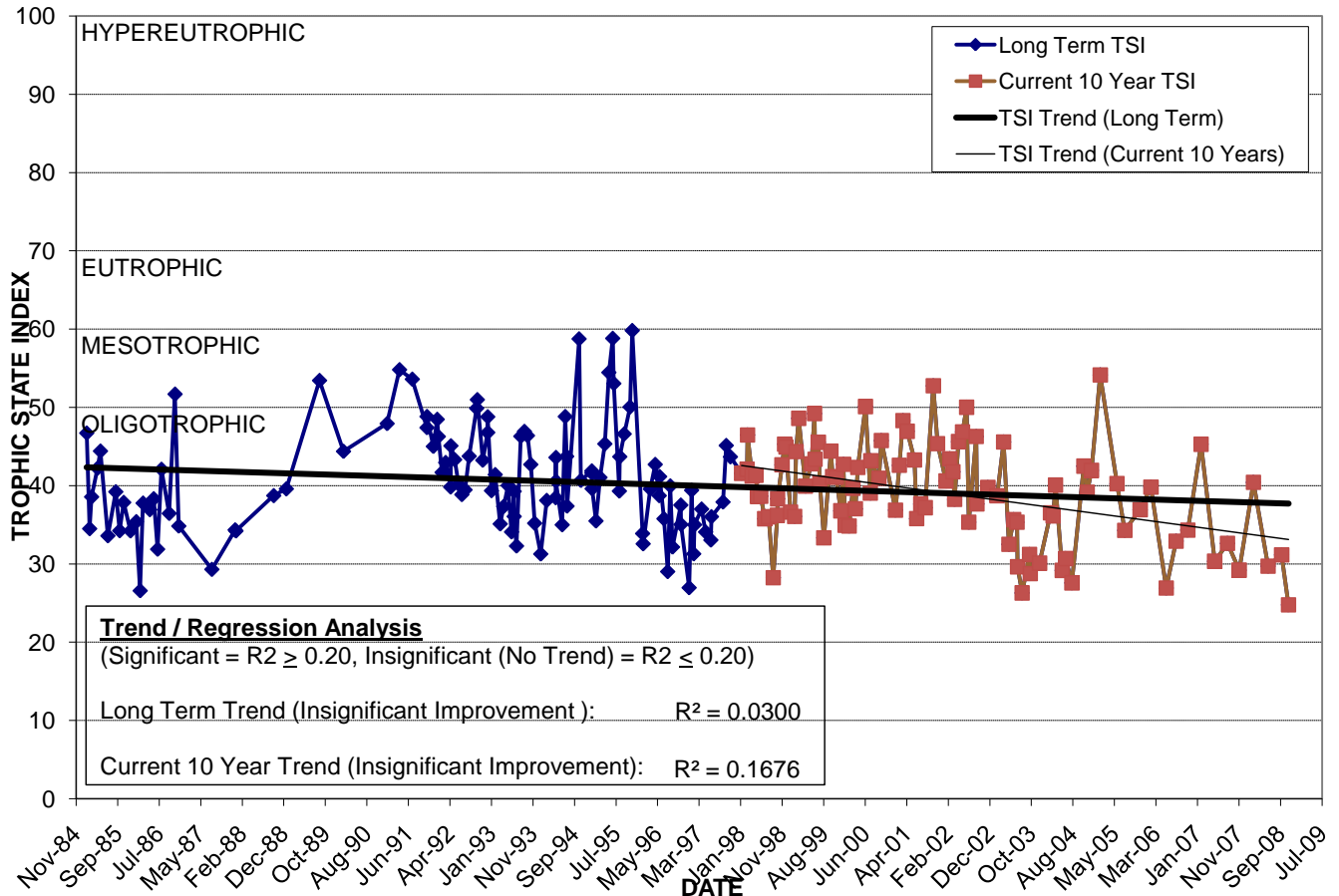
LAKE CAY DEE SOUTH

Location: Lat N **28° 33' 50.8"** Long W **81° 20' 44.2"**
 Section **19** Township **22S** Range **30E**
 Lake Surface Area: **12 acres ***
 Lake Volume: **4,724,500 ft³ ***
 Shoreline Length: **3,710 ft * (1,131 m)**
 Mean Depth: **9.0 ft * (2.7 m)**
 Maximum Depth: **18.0 ft (5.5 m)**

Water Management District: **St. Johns River**
 Drainage Code: **SJ-HB-34**
 Drainage Basin Area: **109 acres ***
 Land Use: **54% Res, 15% Com, 8% Vac ***
 Drain Wells: **1** Aeration: **No**
 Lake Origin: **Natural**
 Grass Carp (*Ctenopharyngodon idella*): **No**

2008 Water Quality Data		TSI Ranking: 10 (out of 95 lakes)			
	Total Phosphorus (mg/l)	Total Nitrogen (mg/l)	Secchi Depth (m)	Chlorophyll-a (mg/m ³)	Trophic State Index
Minimum	0.011	0.70	2.2	0.8	25
Maximum	0.016	0.96	2.9	6.4	40
Average	0.013	0.81	2.7	2.7	33

Long-Term Trophic State Index Values and Linear Regression Trend Line



Comments: * Numbers are for total lake, north and south lobes. This report treats Lake Cay Dee North and South as two separate lakes for water quality purposes only. Aeration system did not function in 2003 and water quality improved.

Location: Southeast of Falcon Dr. and northwest of Heron Dr.