

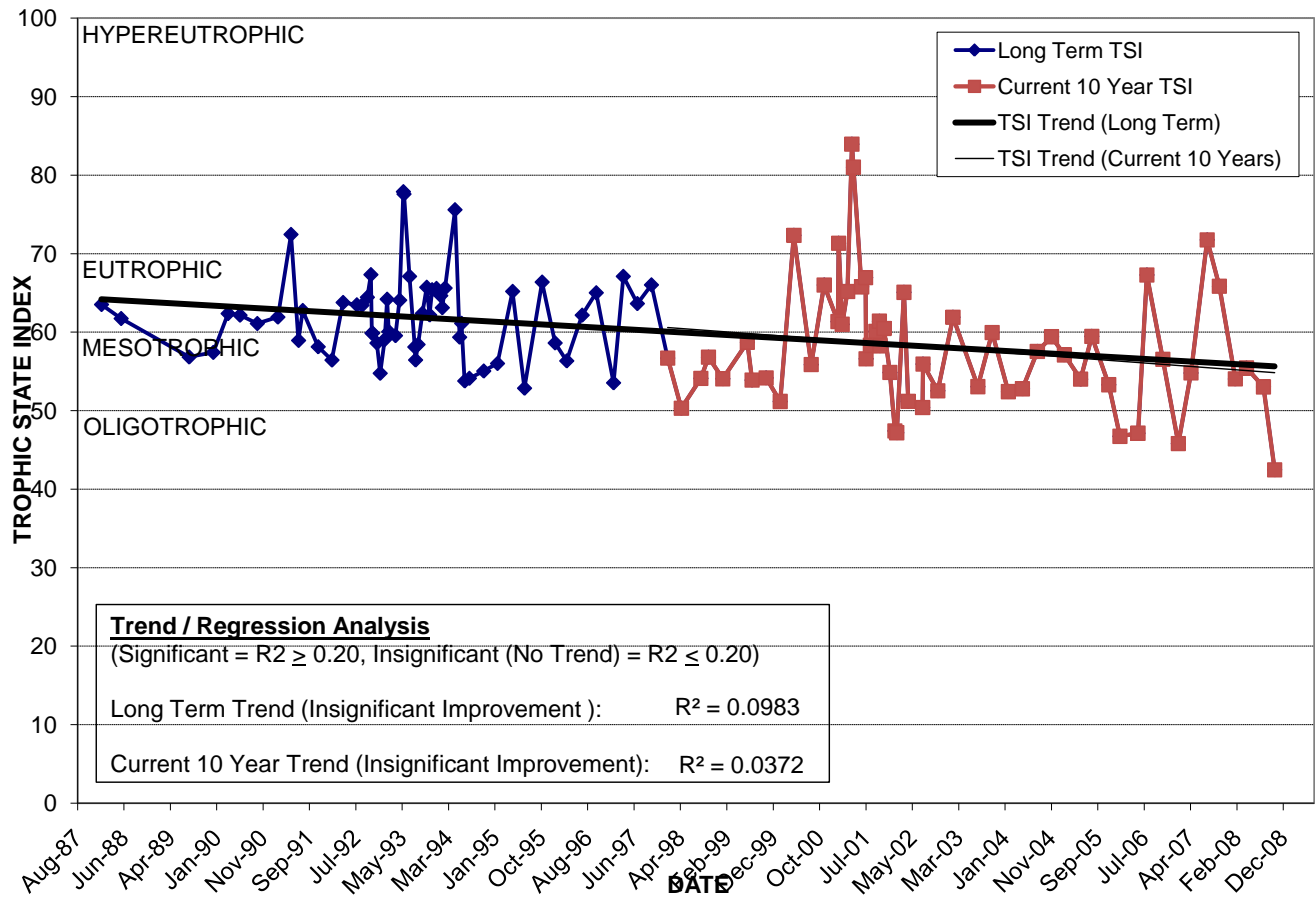
LAKE CHEROKEE

Location: Lat **N 28° 31' 58.8"** Long **W 81° 22' 16.0"**
 Section **36** Township **22S** Range **29E**
 Lake Surface Area: **13 acres**
 Lake Volume: **4,807,900 ft³**
 Shoreline Length: **2,980 ft (908 m)**
 Mean Depth: **8.5 ft (2.6 m)**
 Maximum Depth: **22.4 ft (6.8 m)**

Water Management District: **St. Johns River**
 Drainage Code: **SJ-LE-27**
 Drainage Basin Area: **134 acres**
 Land Use: **40% Res, 7% Com, 27% Vac**
 Drain Wells: **3** Aeration: **No**
 Lake Origin: **Natural**
 Grass Carp (*Ctenopharyngodon idella*): **No**

2008 Water Quality Data		TSI Ranking: 56 (out of 95 lakes)			
	Total Phosphorus (mg/l)	Total Nitrogen (mg/l)	Secchi Depth (m)	Chlorophyll-a (mg/m3)	Trophic State Index
Minimum	0.040	0.65	1.2	2.8	42
Maximum	0.046	0.81	1.6	19.7	55
Average	0.043	0.72	1.3	13.3	52

Long-Term Trophic State Index Values and Linear Regression Trend Line



Comments: Receives overflow from Lake Lucerne, which is treated with alum. Discharges to Lake Davis. Experienced severe algae blooms during 2001, which was probably related to decreased flushing from upstream lakes due to drought conditions.

Location: South of Osceola Ave. and Palmer St. intersection.