

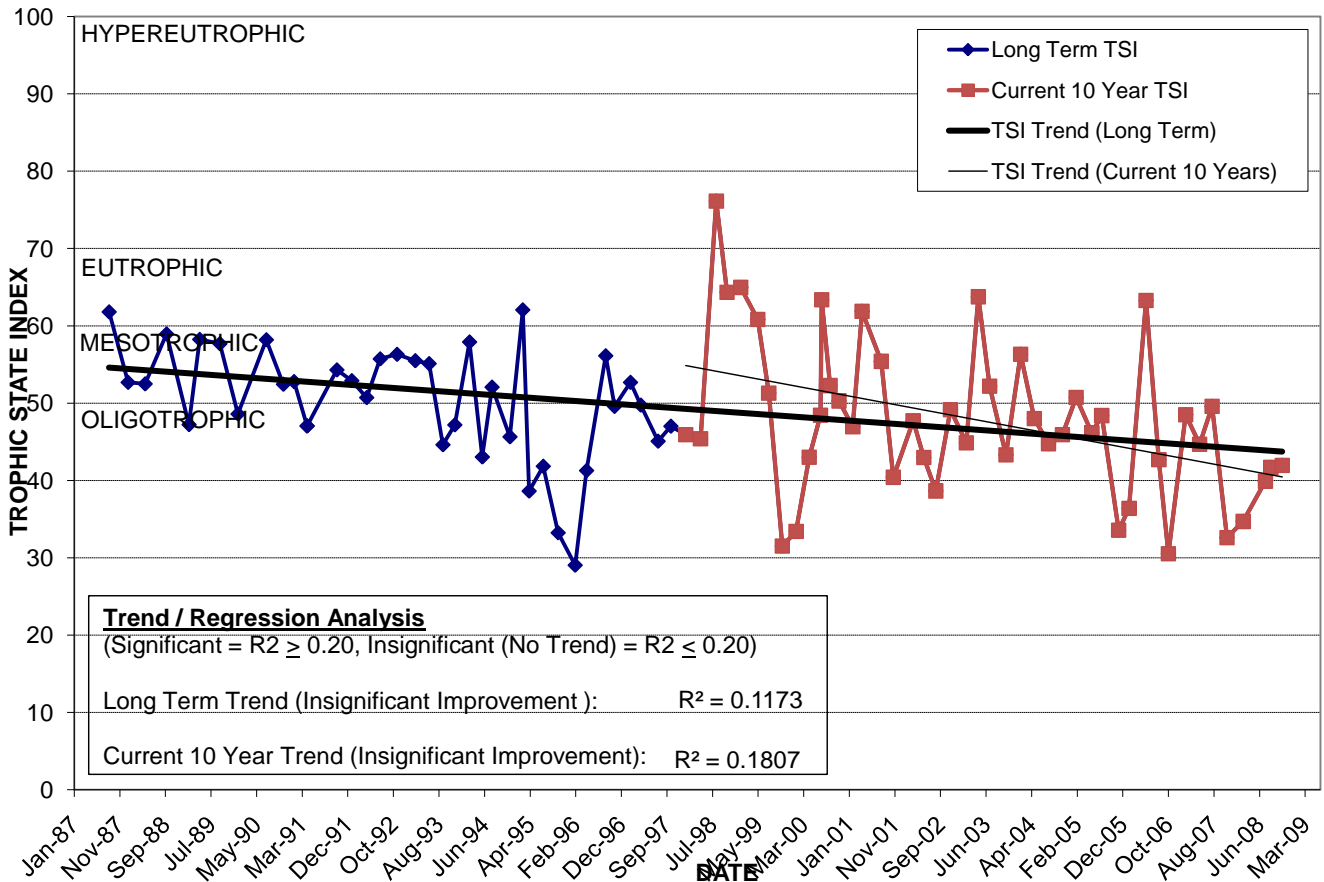
LAKE COMO

Location: Lat **N 28° 32' 09.2"** Long **W 81° 21' 07.2"**
 Section **31** Township **22S** Range **30E**
 Lake Surface Area: **2 acres**
 Lake Volume: **1,026,000 ft³**
 Shoreline Length: **1,053 ft (321 m)**
 Mean Depth: **13.5 ft (4.1 m)**
 Maximum Depth:

Water Management District: **St. Johns River**
 Drainage Code: **SJ-LE-15**
 Drainage Basin Area: **148 acres**
 Land Use: **55% Res, 4% Com, 7% Vac**
 Drain Wells: **No** Aeration: **Yes** (installed 1/87)
 Lake Origin: **Natural**
 Grass Carp (*Ctenopharyngodon idella*): **No**

2008 Water Quality Data		TSI Ranking: 22 (out of 95 lakes)			
	Total Phosphorus (mg/l)	Total Nitrogen (mg/l)	Secchi Depth (m)	Chlorophyll-a (mg/m3)	Trophic State Index
Minimum	0.063	0.59	1.8	0.8	35
Maximum	0.090	0.81	2.3	3.7	42
Average	0.073	0.68	2.0	2.6	40

Long-Term Trophic State Index Values and Linear Regression Trend Line



Comments: Local folklore indicates this lake is bottomless, however its maximum depth is twenty-five feet.

Location: Just south of the Bumby Ave. and Anderson St. intersection.