

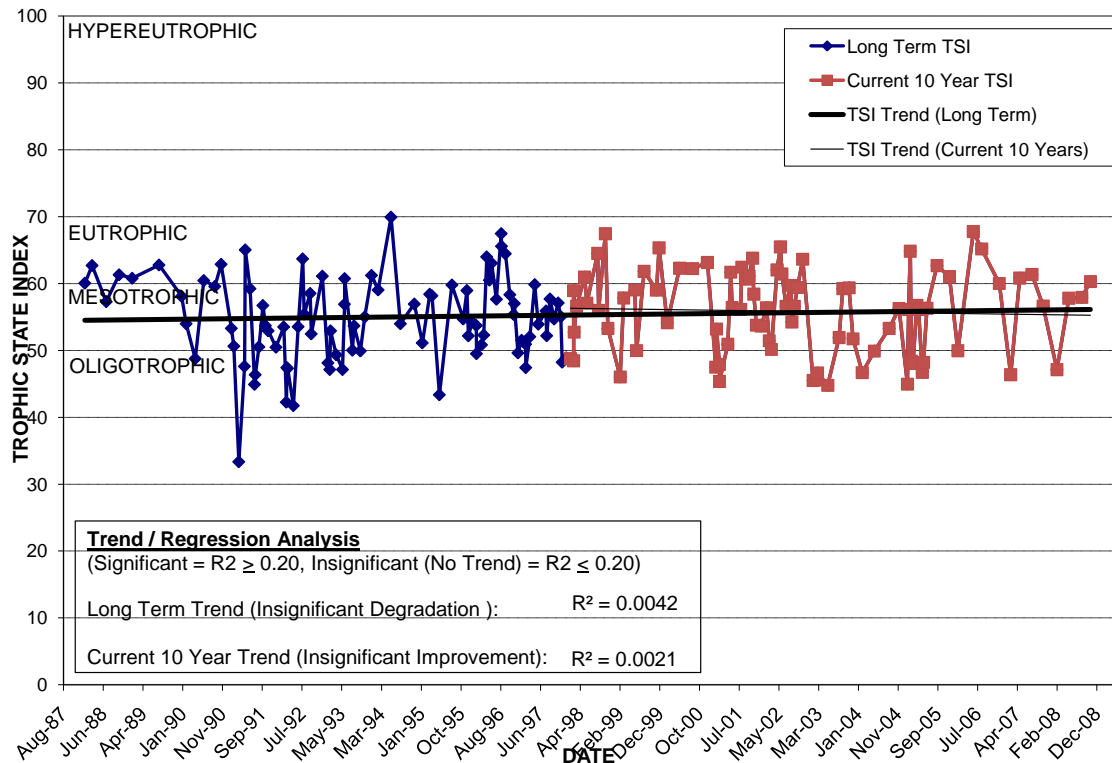
LAKE CONCORD

Location: Lat **N 28° 33' 24.1"** Long **W 81° 23' 07.1"**
 Section **23** Township **22S** Range **29E**
 Lake Surface Area: **66 acres**
 Lake Volume: **38,718,000 ft³**
 Shoreline Length: **7,269 ft (2,216 m)**
 Mean Depth: **13.6 ft (4.1 m)**
 Maximum Depth:

Water Management District: **St. Johns River**
 Drainage Code: **SJ-HB-27**
 Drainage Basin Area: **356 acres**
 Land Use: **24% Res, 27% Com, 20% Vac**
 Drain Wells: **1** Aeration: **Yes** (installed 11/95)
 Lake Origin: **Natural**
 Grass Carp (*Ctenopharyngodon idella*): **Yes**

2008 Water Quality Data		TSI Ranking: 64 (out of 95 lakes)			
	Total Phosphorus (mg/l)	Total Nitrogen (mg/l)	Secchi Depth (m)	Chlorophyll-a (mg/m ³)	Trophic State Index
Minimum	0.023	0.68	0.9	6.9	47
Maximum	0.036	1.01	1.3	24.8	60
Average	0.031	0.91	1.1	18.7	56

Long-Term Trophic State Index Values and Linear Regression Trend Line



Comments: Lake Concord was receiving low levels of trichloroethene from contaminated groundwater. A groundwater treatment system and lake aeration has been installed to mitigate this pollutant.

Location: Between I-4 and Edgewater Dr., north of Colonial Dr. in College Park.