

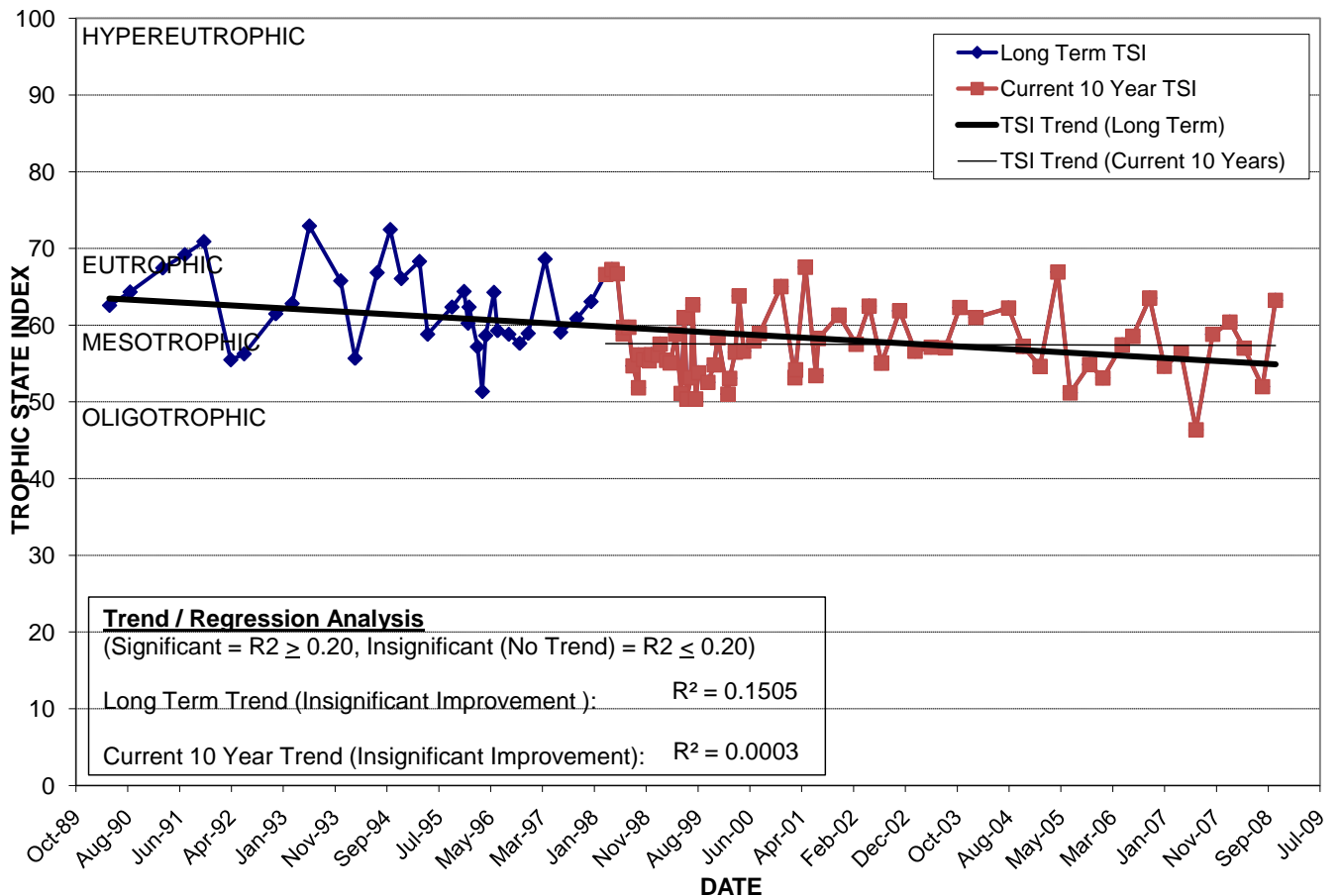
LAKE COPELAND

Location: Lat **N 28° 31' 39.0"** Long **W 81° 22' 28.9"**
 Section **36** Township **22S** Range **29E**
 Lake Surface Area: **15 acres**
 Lake Volume: **5,661,200 ft³**
 Shoreline Length: **2,450 ft (747 m)**
 Mean Depth: **8.7 ft (2.7 m)**
 Maximum Depth: **16.0 ft (4.9 m)**

Water Management District: **St. Johns River**
 Drainage Code: **SJ-LE-29**
 Drainage Basin Area: **58 acres**
 Land Use: **54% Res, 9% Com, 3% Vac**
 Drain Wells: **1** Aeration: **No**
 Lake Origin: **Natural**
 Grass Carp (*Ctenopharyngodon idella*): **No**

2008 Water Quality Data		TSI Ranking: 68 (out of 95 lakes)			
	Total Phosphorus (mg/l)	Total Nitrogen (mg/l)	Secchi Depth (m)	Chlorophyll-a (mg/m3)	Trophic State Index
Minimum	0.023	0.92	0.8	12.6	52
Maximum	0.038	1.16	1.3	22.0	63
Average	0.032	1.08	1.0	15.2	58

Long-Term Trophic State Index Values and Linear Regression Trend Line



Comments: Improvements in water quality is probably due to treating the lake with Aquashade, which began in 1998. Aquashade is a blue dye that blocks sunlight from algae.

Location: Just east of Orange Ave. across from Orlando Regional Hospital.