

LAKE DANIEL

Location: Lat **N 28° 34' 55.6"** Long **W 81° 24' 04.3"**

Section **10** Township **22S** Range **29E**

Lake Surface Area: **8 acres**

Lake Volume: **3,900,000 ft³**

Shoreline Length: **2,194 ft (669 m)**

Mean Depth: **11.7 ft (3.6 m)**

Maximum Depth:

Water Management District: **St. Johns River**

Drainage Code: **SJ-LW-9**

Drainage Basin Area: **70 acres**

Land Use: **71% Res, 1% Vac**

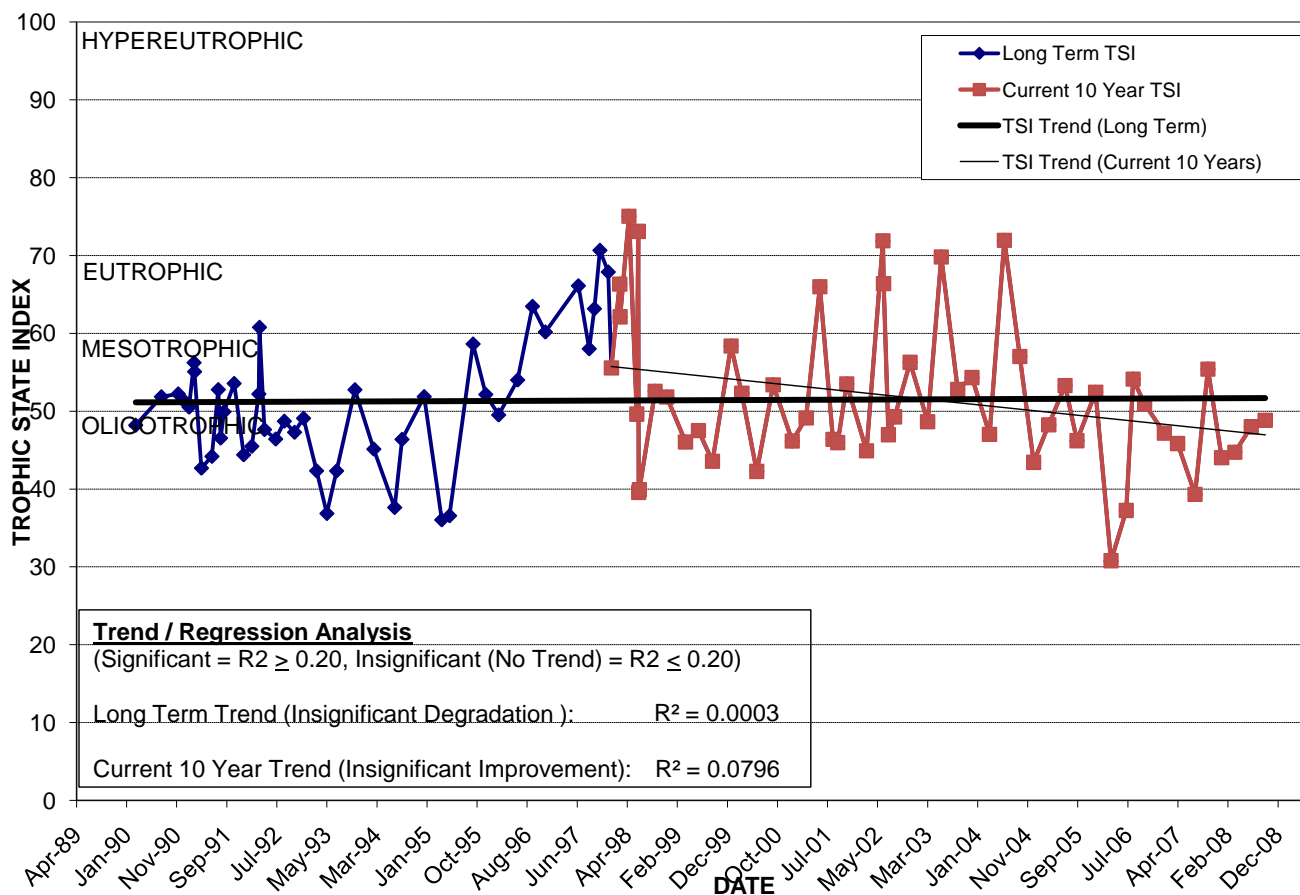
Drain Wells: **No** Aeration: **No**

Lake Origin: **Natural**

Grass Carp (*Ctenopharyngodon idella*): **No**

2008 Water Quality Data		TSI Ranking: 37 (out of 95 lakes)			
	Total Phosphorus (mg/l)	Total Nitrogen (mg/l)	Secchi Depth (m)	Chlorophyll-a (mg/m3)	Trophic State Index
Minimum	0.018	0.80	1.2	5.0	44
Maximum	0.025	1.02	2.0	7.4	49
Average	0.022	0.91	1.6	6.6	46

Long-Term Trophic State Index Values and Linear Regression Trend Line



Comments: Alum treatment in fall of 1998 resulted in an improvement in water quality. Receives overflow water from Lake Silver and discharges to Lake Sarah.

Location: North of Maury Rd. between Interlaken Rd. and Wilder Ln. in the Palomar neighborhood.