

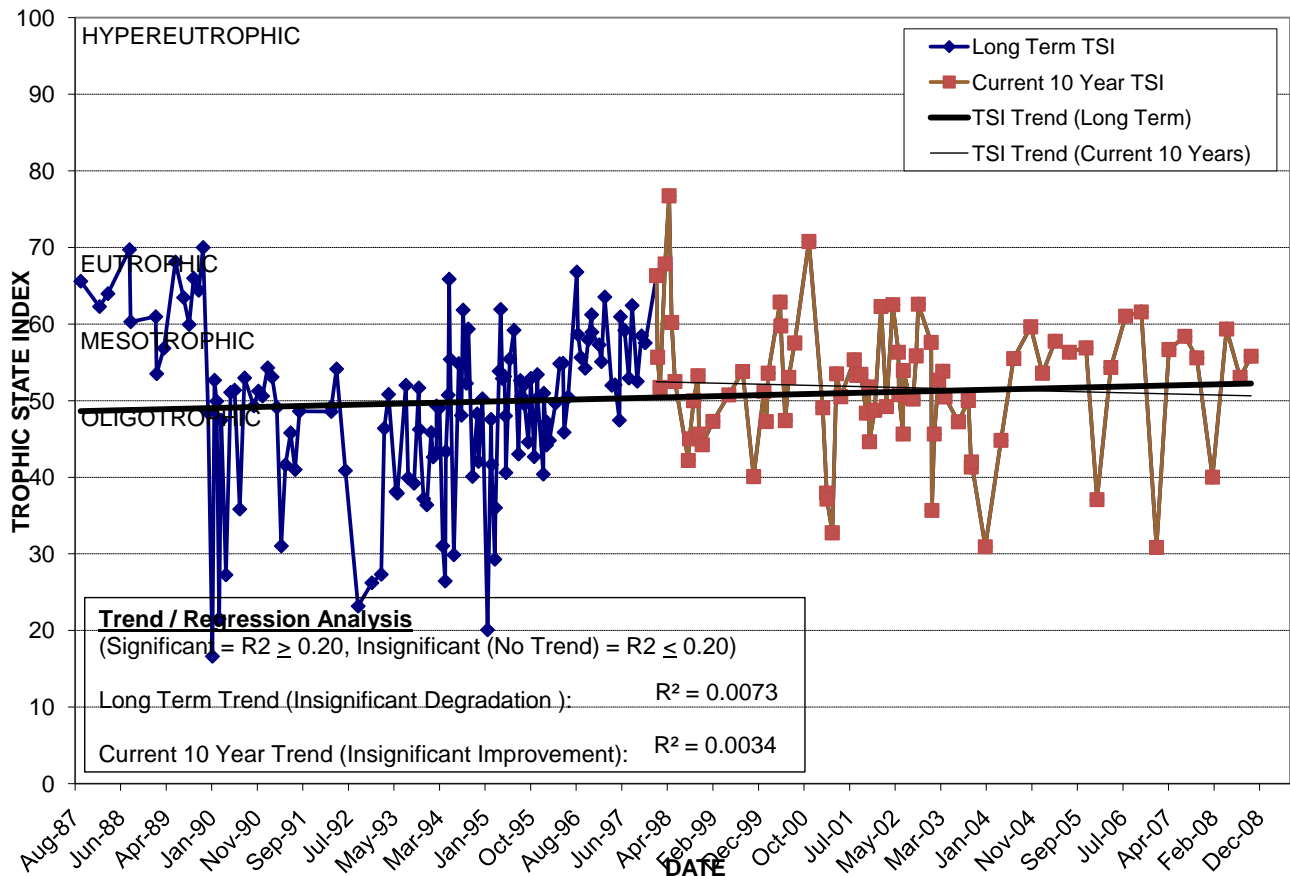
# LAKE DOT

Location: Lat **N 28° 33' 08.2"** Long **W 81° 23' 12.4"**  
 Section **26** Township **22S** Range **29E**  
 Lake Surface Area: **6 acres**  
 Lake Volume: **2,200,000 ft<sup>3</sup>**  
 Shoreline Length: **1,770 ft (539 m)**  
 Mean Depth: **9.1 ft (2.8 m)**  
 Maximum Depth:

Water Management District: **St. Johns River**  
 Drainage Code: **SJ-HB-29**  
 Drainage Basin Area: **295 acres**  
 Land Use: **20% Res, 26% Com, 36% Vac**  
 Drain Wells: **No** Aeration: **No**  
 Lake Origin: **Natural**  
 Grass Carp (*Ctenopharyngodon idella*): **No**

<b>2008 Water Quality Data</b>		<b>TSI Ranking: 54 (out of 95 lakes)</b>			
	Total Phosphorus (mg/l)	Total Nitrogen (mg/l)	Secchi Depth (m)	Chlorophyll-a (mg/m3)	Trophic State Index
Minimum	0.053	0.78	1.1	4.2	40
Maximum	0.074	1.09	3.3	29.8	59
Average	0.060	0.96	1.7	15.2	52

**Long-Term Trophic State Index Values and Linear Regression Trend Line**



**Comments:** In 1989 an alum injection system was installed to treat stormwater runoff, resulting in water quality improvements. Water quality improvements benefit downstream lakes since Lake Dot discharges large quantities of water to Lake Concord, which is part of the Howell Branch chain of lakes.

**Location:** On the south side of Colonial Dr., just north of the Amway Arena.