

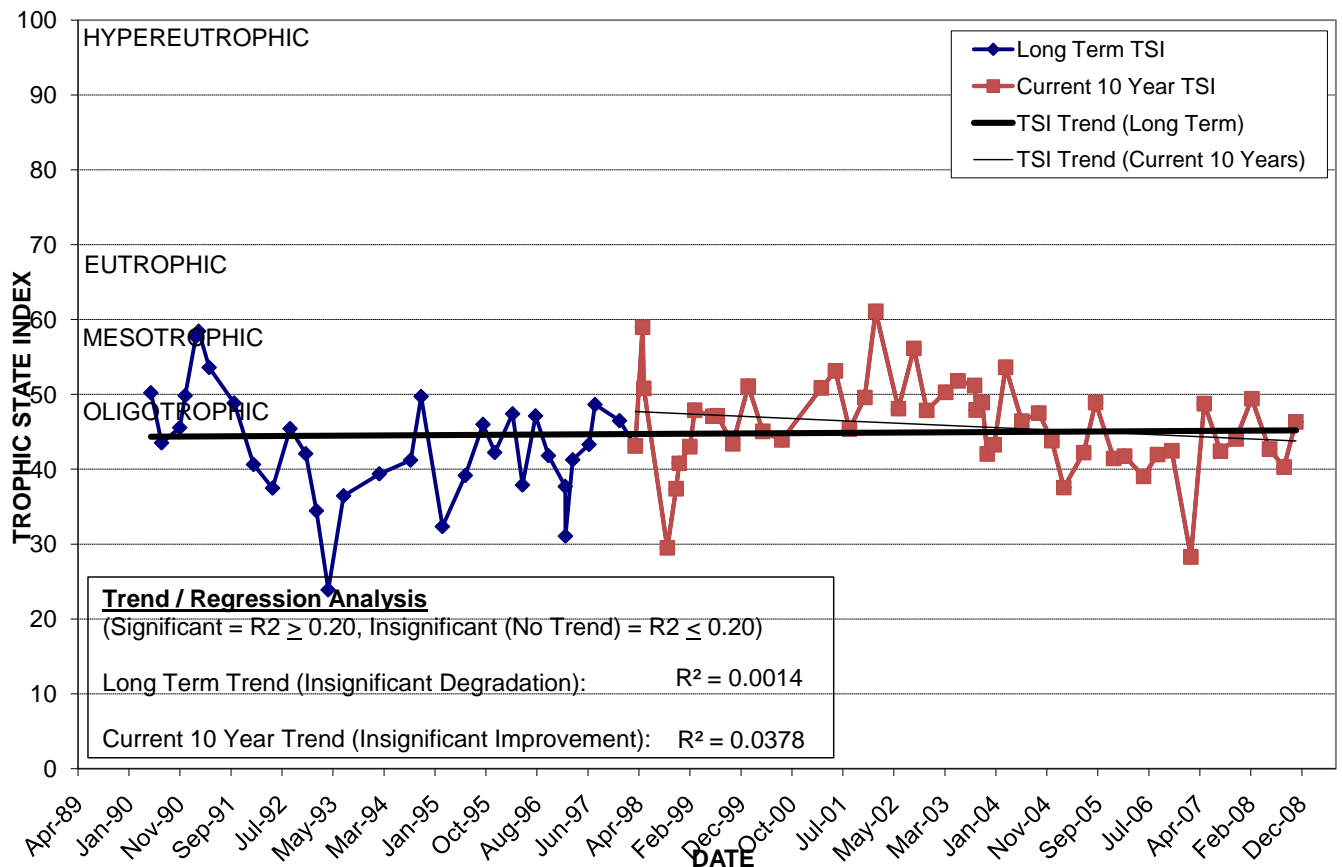
LAKE DRUID

Location: Lat **N 28° 33' 37.4"** Long **W 81° 20' 59.3"**
 Section **19** Township **22S** Range **30E**
 Lake Surface Area: **17 acres**
 Lake Volume: **5,600,000 ft³**
 Shoreline Length: **3,848 ft (1,173 m)**
 Mean Depth: **7.6 ft (2.3 m)**
 Maximum Depth:

Water Management District: **St. Johns River**
 Drainage Code: **SJ-HB-33**
 Drainage Basin Area: **151 acres**
 Land Use: **41% Res, 48% Com**
 Drain Wells: **No** Aeration: **No**
 Lake Origin: **Natural**
 Grass Carp (*Ctenopharyngodon idella*): **Yes**

2008 Water Quality Data		TSI Ranking: 34 (out of 95 lakes)			
	Total Phosphorus (mg/l)	Total Nitrogen (mg/l)	Secchi Depth (m)	Chlorophyll-a (mg/m ³)	Trophic State Index
Minimum	0.018	0.48	1.8	6.3	40
Maximum	0.033	0.87	2.0	15.2	49
Average	0.024	0.66	1.9	9.6	45

Long-Term Trophic State Index Values and Linear Regression Trend Line



Comments: Overflows to Lake Rowena at water elevation of 101.1 NGVD. Trichloroethene levels are monitored on Lake Druid quarterly to determine if the chemical is entering the lake from a nearby contaminated groundwater site.

Location: East of Bumby Ave. between Chelsea St. and Weber St. in the Audubon Park neighborhood.