

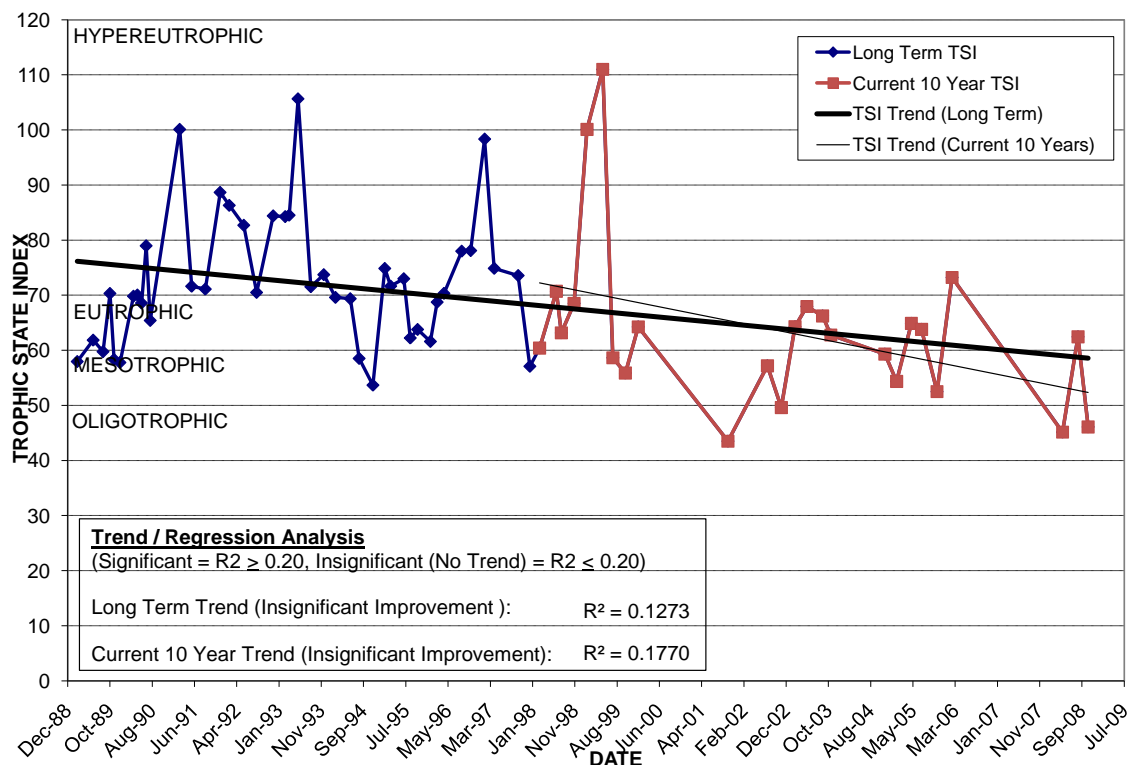
LAKE EMERALD

Location: Lat **N 36° 31' 47.6"** Long **W 81° 21' 47.5"**
 Section **36** Township **22S** Range **29E**
 Lake Surface Area: **3 acres**
 Lake Volume: **701,017 ft³**
 Shoreline Length: **1,484 ft (452 m)**
 Mean Depth: **6.1 ft (1.9 m)**
 Maximum Depth:

Water Management District: **St. Johns River**
 Drainage Code: **SJ-LE-22**
 Drainage Basin Area: **28 acres**
 Land Use: **74% Res, 5% Vac**
 Drain Wells: **No** Aeration: **No**
 Lake Origin: **Natural**
 Grass Carp (*Ctenopharyngodon idella*): **No**

2008 Water Quality Data		TSI Ranking: 58 (out of 95 lakes)			
	Total Phosphorus (mg/l)	Total Nitrogen (mg/l)	Secchi Depth (m)	Chlorophyll-a (mg/m3)	Trophic State Index
Minimum	0.058	0.84	0.8	2.7	45
Maximum	0.067	1.21	1.9	19.0	62
Average	0.063	1.06	1.3	9.2	53

Long-Term Trophic State Index Values and Linear Regression Trend Line



Comments: Leaks water into aquifer, which causes the lake to dry up during periods of low rainfall. Very little water quality data collected during 2000 and 2001 since lake was dry during most of this time period. Receives overflow water from Lake Davis.

Location: Just south of Gore St. and east of Mills Ave.